



STATE PERSONNEL DEVELOPMENT GRANT (SPDG)

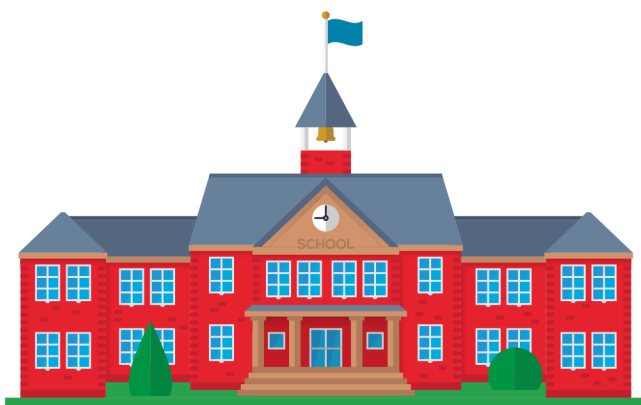
PURPOSE

This project enhances our statewide system for personnel preparation and professional development (PD) to prepare educators to implement evidence-based literacy instruction (EBLI) through a multi-tiered system of support (MTSS).

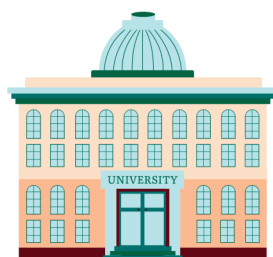
PARTNERS



Rhode Island Parent Information Network (RIPIN)



Local Education Agencies (LEAs)

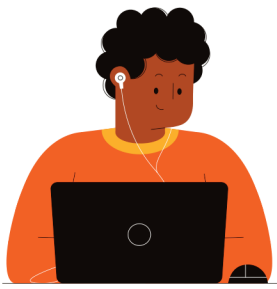


Educator Preparation Programs (EPPs)

PROJECT GOALS

- Increase literacy outcomes for students with IEPs
- Expand statewide online training of Science of Reading and Structured Literacy (a.k.a., EBLI)
- Provide statewide PD to early learning and LEA staff through online learning and coaching to improve implementation of EBLI
- Assist educator preparation program providers in instructing pre-service teachers in EBLI within a MTSS
- Engage community partners to improve family awareness on supporting their children and teens in EBLI within a MTSS

PD DELIVERY



Technology



Coaching



Partnerships

PARTNER GOALS



- Increase awareness, knowledge and implementation of EBLI within a MTSS
- Improve accuracy in early identification of children at risk for reading difficulties
- Enhance ability to create positive literacy outcomes for children with IEPs

