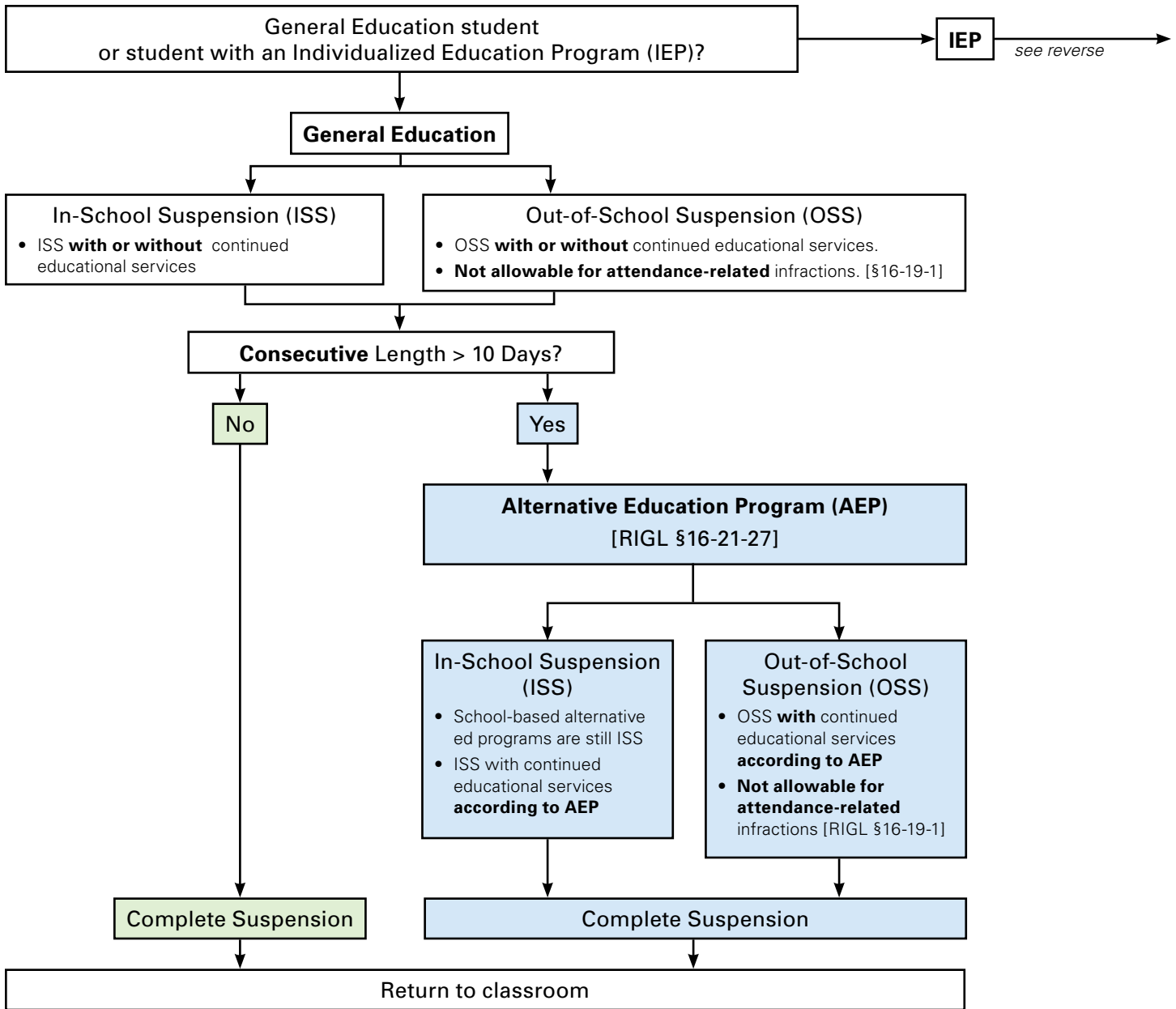


School Removals: Procedures and Requirements



BEST PRACTICES

Provide continued educational services, regardless of setting, with behavioral interventions designed to prevent recurrence.

Alternatives to Suspension

- Restorative justice/restitution
- Reflection/counseling
- Behavioral contracting
- Detention
- Community service
- Parent meetings
- Loss of privileges

Prevent Recurrence

- Mentoring
- Instruction in social and emotional skills
- Restorative practices
- Parent engagement and involvement
- Increased professional development for staff

Abbreviations:

LEA: Local Education Agency (school district)
IEP: Individualized Education Program
ISS: In-School Suspension
OSS: Out-of-School Suspension

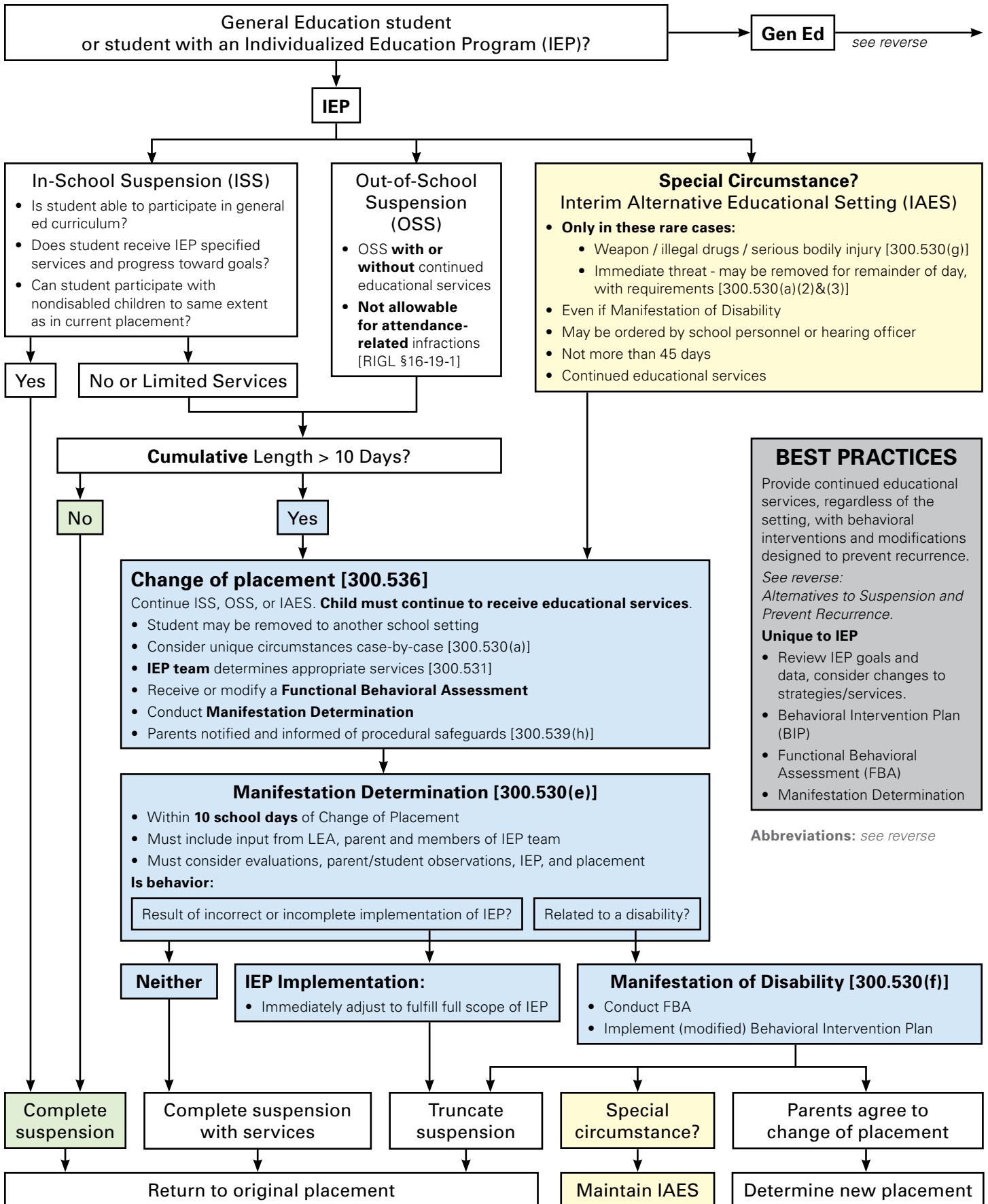
AEP: Alternative Education Program
IAES: Interim Alternative Educational Setting
FBA: Functional Behavioral Assessment
BIP: Behavioral Intervention Plan

Legal References

Regulatory references, e.g. [300.530], are from the Rhode Island Board of Education Regulations Governing the Education of Children with Disabilities.
 Statutory references, e.g. [RIGL §16-19-1], are from Rhode Island General Laws, Title 16.

For more information: visit WWW.RIDE.RI.GOV

School Removals: Procedures and Requirements



BEST PRACTICES

Provide continued educational services, regardless of the setting, with behavioral interventions and modifications designed to prevent recurrence.

See reverse: Alternatives to Suspension and Prevent Recurrence.

Unique to IEP

- Review IEP goals and data, consider changes to strategies/services.
- Behavioral Intervention Plan (BIP)
- Functional Behavioral Assessment (FBA)
- Manifestation Determination

Abbreviations: see reverse