

## About the Living and Learning Center

This innovative, experiential program is a collaboration between Bristol Warren Regional School District and Looking Upwards.

Our integrated team of educators and transition coaches creates a powerful and consistent network of support. Working closely with each individual, the team fosters students' personal growth and progress with academic and life goals.

Looking Upwards has been supporting children and adults with developmental disabilities for over 35 years. They are a trusted resource for families, helping prepare young people to find a meaningful path to adult life.

---

For more information:  
Contact Your IEP Team



Offering students  
the opportunity to

- Explore interests
- Develop unique strengths
- Acquire job skills
- Build confidence
- Increase responsibility
- Learn real world social skills
- Maximize independence
- Expand safety awareness

## Bristol Warren's Living and Learning Center

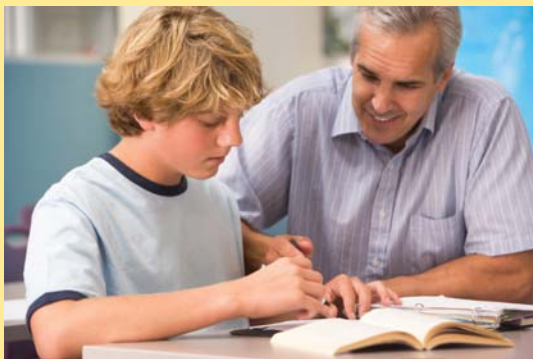


**A doorway into  
the world of work**

# EXPLORE

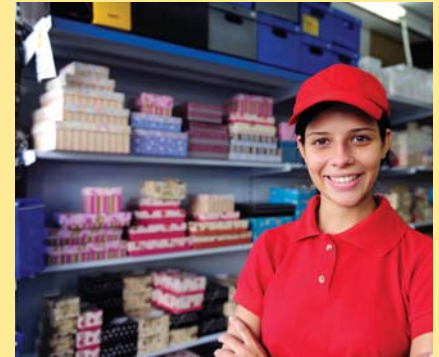
## Areas of Focus Include

- Vocational Assessment
- Resume Building
- Job Search Skills
- Practice for Job Interviews
- Work Experience
- On-the-job Skill Development
- Time Management
- Workplace Culture
- Social Skill Development
- Stress Management
- Self-Assessment
- Accessing Work Resources
- Independence in the Workplace



# Experience the possibilities

For students standing on the horizon with their whole lives stretching out before them, gaining real life job experience can be a critical step towards finding a satisfying career.



**The transition to work life** is filled with choices and challenges. There's so much to know and to think about in order to be prepared. Bristol Warren's Living and Learning Center provides support for skill development.

***Learning takes place wherever students can best develop new skills.***

### **Job Sites**

Students explore their interests and gain valuable on-the-job experience and skills

### **Community-Based Settings**

Students develop daily living skills in real world settings

### **Public Transportation**

Students learn to get to their new destinations safely

### **The Learning Center**

Students continue academic learning and use proven curriculum for life skill development

# LEARN

We offer personalized coaching and career development tailored to each student's goals.

## Work Experiences Help Students

- Gain Skills
- Build Confidence
- Develop a Resume
- Network in the Community

# JOBS

Students gain job experience suited to their interests.