

Cranston Public Schools

INSTRUCTION

Detail Functions	Per Pupil		Increase <Decr>
	05/06	04/05	
Instructional Teachers	\$6,248	\$6,139	1.8%
Substitutes	\$104	\$122	-15.1%
Instructional Parapros	\$243	\$172	41.4%
Pupil-Use Technology	\$119	\$109	9.6%
Instructional Materials	\$142	\$157	-9.2%
Total	\$6,857	\$6,699	2.4%

INSTRUCTIONAL SUPPORT

Detail Functions	Per Pupil		Increase <Decr>
	05/06	04/05	
Guidance & Counseling	\$261	\$276	-5.5%
Library & Media	\$185	\$175	5.7%
Extracurricular	\$94	\$84	11.8%
Student Health/Services	\$145	\$130	11.5%
Curriculum Development	\$167	\$198	-15.8%
Staff Development	\$41	\$39	6.6%
Sabbaticals	\$0	\$0	0.0%
Program Management	\$139	\$128	8.8%
Therapists, Psychologists	\$560	\$572	-1.9%
Total	\$1,591	\$1,600	-0.6%

OPERATIONS

Detail Function	Per Pupil		Increase <Decr>
	05/06	04/05	
Transportation	\$561	\$500	12.3%
Food Service	\$238	\$227	5.0%
Safety	\$0	\$0	0.0%
Building Upkeep	\$968	\$885	9.4%
Data Processing	\$14	\$12	17.3%
Business Operations	\$203	\$183	11.0%
Total	\$1,985	\$1,807	9.9%

LEADERSHIP

Detail Function	Per Pupil		Increase <Decr>
	05/06	04/05	
Principals & Asst. Prin	\$404	\$329	22.9%
School Office	\$250	\$236	6.1%
Deputies & Administrators	\$67	\$67	-0.1%
Superintendent & Board	\$27	\$24	13.1%
Legal	\$11	\$16	-30.3%
Total	\$760	\$672	13.1%

#2a Total Expenditures

By 5 Major and 32 Detail Functions

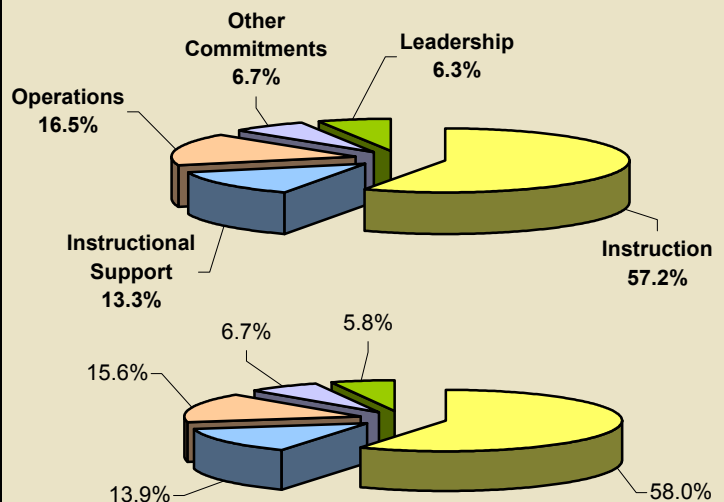
July 2005 - June 2006

Expenditures:	\$128,861,561
District Enrollment (ADM):	10,744
District Per Pupil:	\$11,994

July 2004 - June 2005

Expenditures:	\$123,812,320
District Enrollment (ADM):	10,723
District Per Pupil:	\$11,546

July 2005 - June 2006



July 2004 - June 2005

OTHER COMMITMENTS

Detail Functions	Per Pupil		Increase <Decr>
	05/06	04/05	
Budgeted Contingencies	\$0	\$0	0.0%
Debt Service	\$0	\$0	0.0%
Capital Projects	\$0	\$0	0.0%
Pass-Throughs	\$593	\$594	-0.3%
Retiree Benefits	\$208	\$171	21.6%
Enterprise Services	\$1	\$3	-74.2%
Claims & Settlements	\$0	\$0	0.0%
Total	\$801	\$768	4.2%