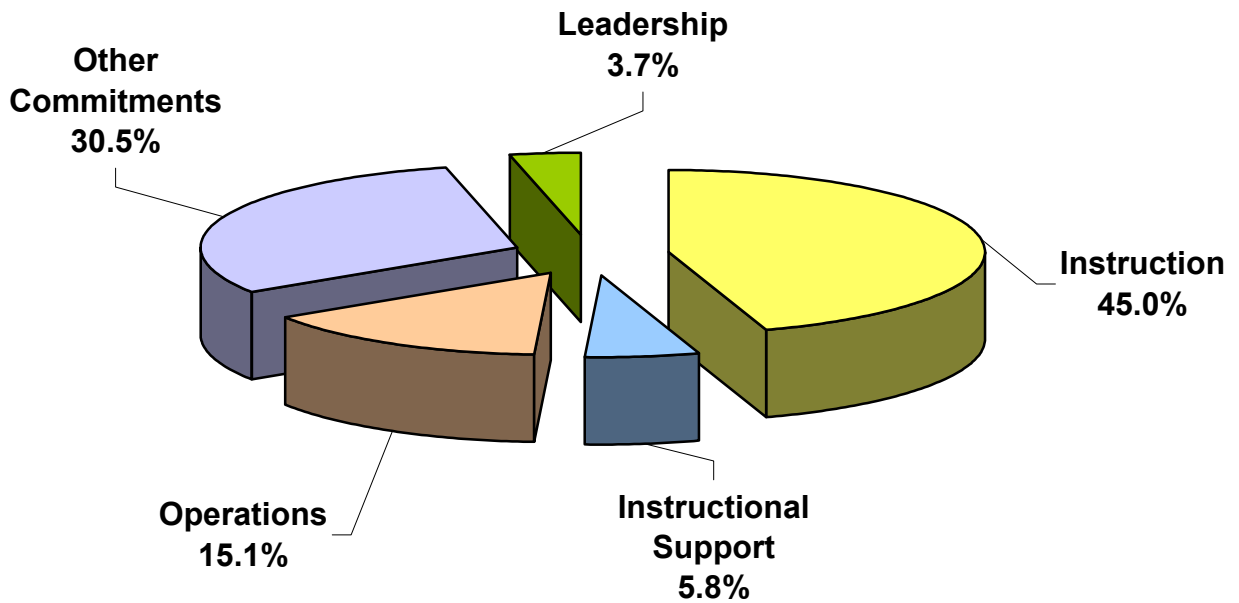
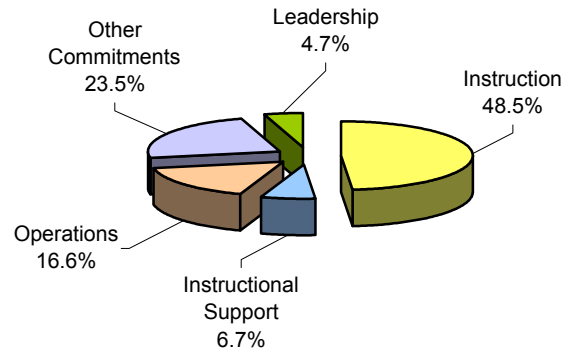


Little Compton School Department

July 2004 - June 2005
(Previous Year)

**#1 Total Expenditures
(All Funding Sources)
By Five Major Functions
July 2005 - June 2006**



District Enrollment (ADM): 475	Amount	Per Pupil	%-To-Total Expenditures
Instruction	\$2,520,079	\$5,305	45.0%
Instructional Support	\$322,481	\$679	5.8%
Operations	\$844,513	\$1,778	15.1%
Other Commitments	\$1,711,982	\$3,604	30.5%
Leadership	\$204,983	\$432	3.7%
Total District Expenditures	\$5,604,037	\$11,798	100.0%