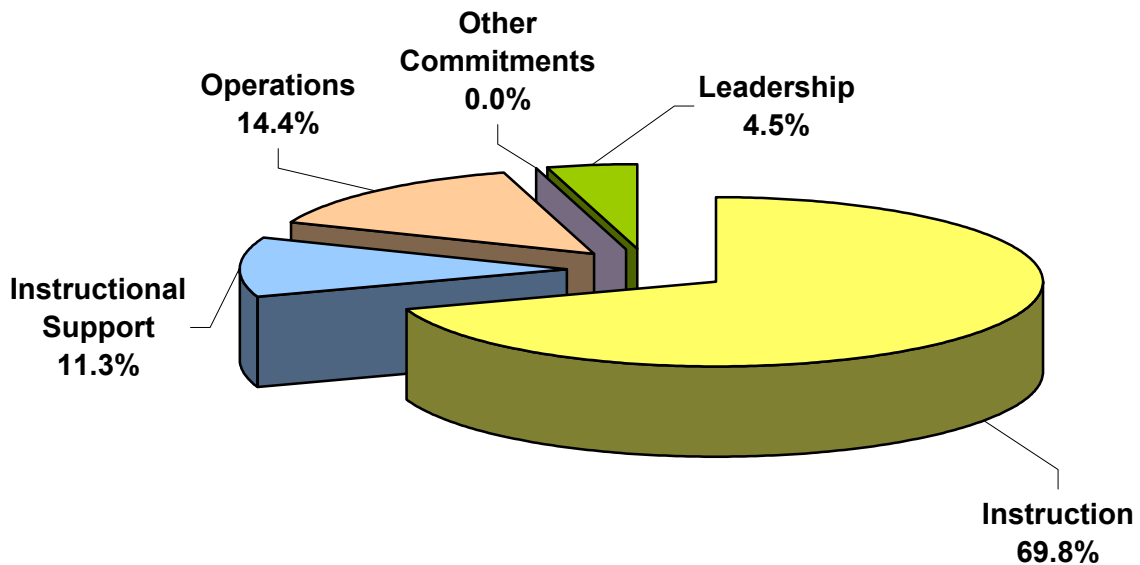
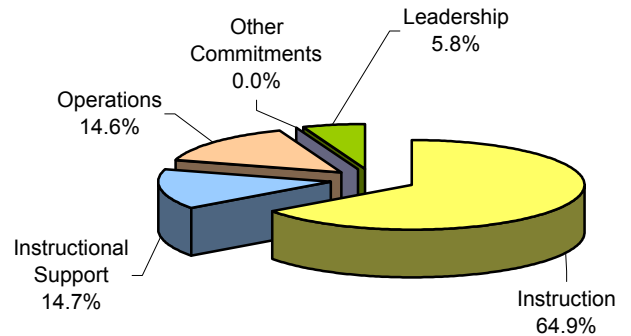


North Smithfield School District

#9 Elementary Schools Expenditures by Five Functions %-To-Total Elementary July 2005 - June 2006

July 2004 - June 2005
(Previous Year)



Elementary School Enrollment (ADM): 1,003	Amount	\$ Per Pupil	%-To-Total Elementary
Instruction	\$7,304,307	\$7,282	69.8%
Instructional Support	\$1,179,059	\$1,176	11.3%
Operations	\$1,512,055	\$1,508	14.4%
Other Commitments	\$0	\$0	0.0%
Leadership	\$473,220	\$472	4.5%
Total Elementary School Expenditures	\$10,468,641	\$10,437	100.0%
Total District & %-Elementary-To-District	\$19,750,846	\$10,495	53.0%