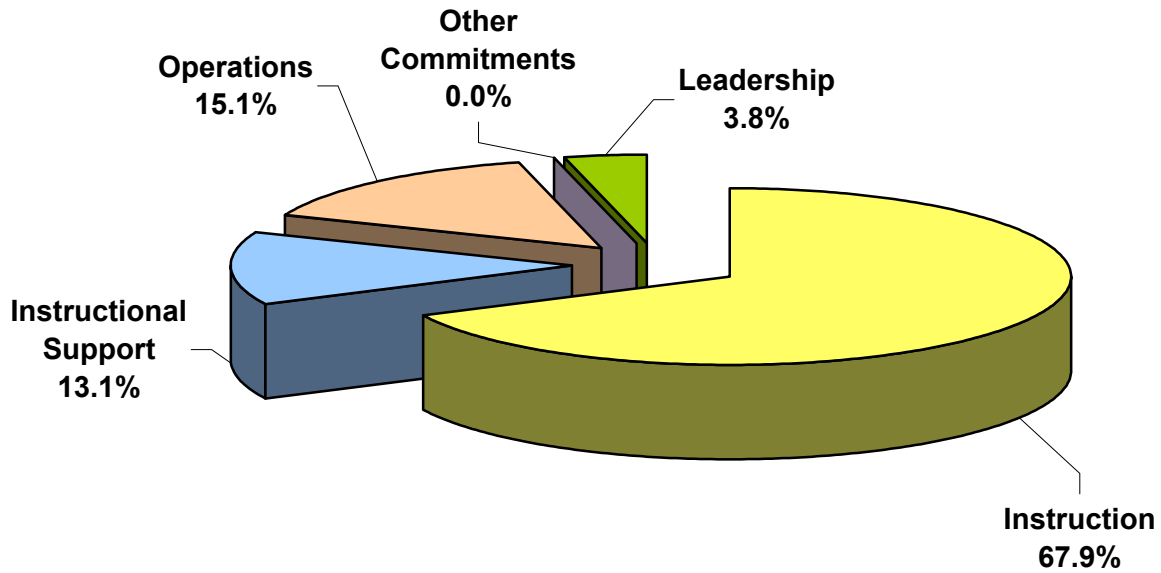
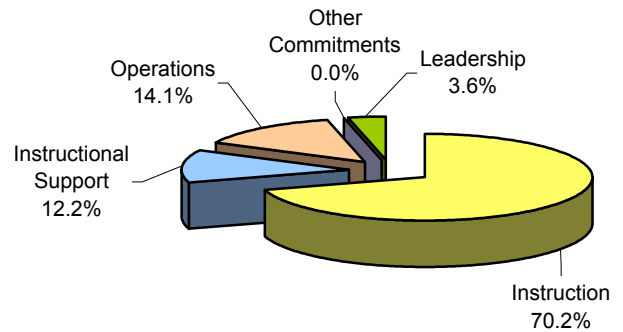


Scituate School Department

July 2004 - June 2005
(Previous Year)

**#10 Middle Schools
Expenditures by Five Functions
%-To-Total Middle
July 2005 - June 2006**



Middle School Enrollment (ADM): 456	Amount	\$ Per Pupil	%-To-Total Middle
Instruction	\$2,855,478	\$6,262	67.9%
Instructional Support	\$552,139	\$1,211	13.1%
Operations	\$636,579	\$1,396	15.1%
Other Commitments	\$0	\$0	0.0%
Leadership	\$161,074	\$353	3.8%
Total Middle School Expenditures	\$4,205,270	\$9,222	100.0%
Total District & %-Middle School-To-District	\$18,870,612	\$10,698	22.3%