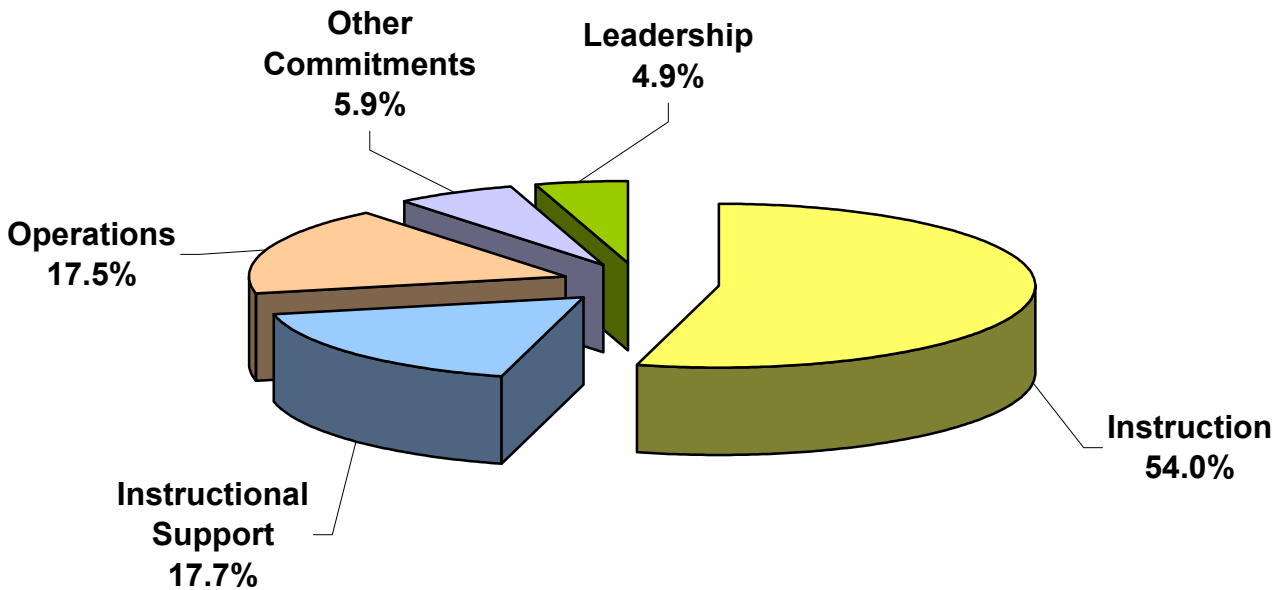
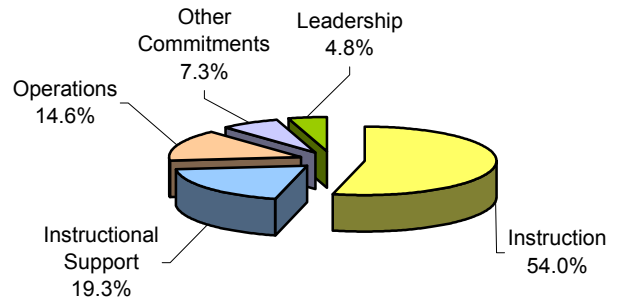


Westerly School Department

#1 Total Expenditures (All Funding Sources) By Five Major Functions July 2005 - June 2006

July 2004 - June 2005 (Previous Year)



District Enrollment (ADM): 3,536	Amount	Per Pupil	%-To-Total Expenditures
Instruction	\$25,740,243	\$7,279	54.0%
Instructional Support	\$8,447,453	\$2,389	17.7%
Operations	\$8,338,127	\$2,358	17.5%
Other Commitments	\$2,797,165	\$791	5.9%
Leadership	\$2,313,174	\$654	4.9%
Total District Expenditures	\$47,636,161	\$13,472	100.0%