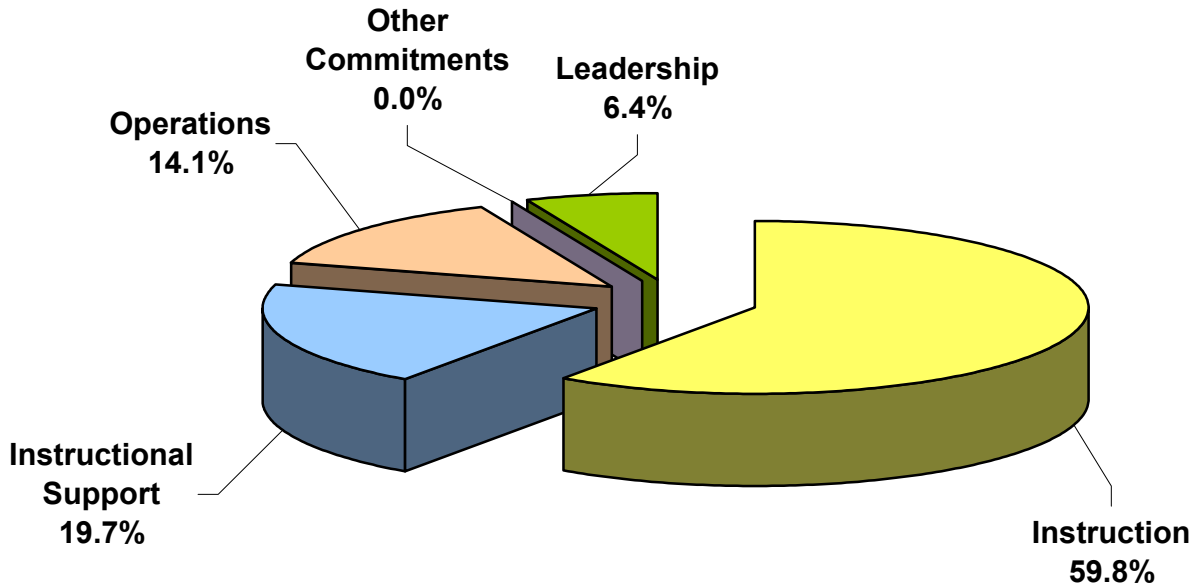
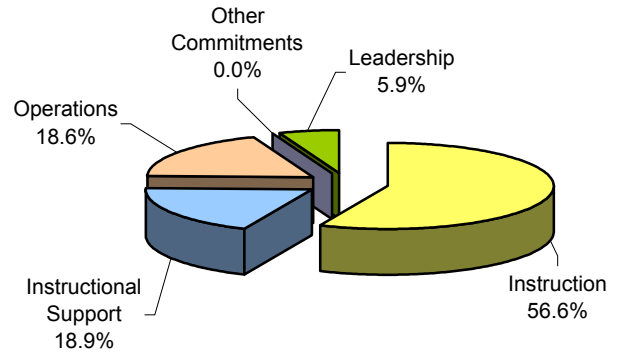


Chariho School District

#11 High Schools Expenditures by Five Functions %-To-Total High Schools July 2005 - June 2006

July 2004 - June 2005 (Previous Year)



High School Enrollment (ADM): 1,223	Amount	\$ Per Pupil	%-To-Total High Schools
Instruction	\$8,621,272	\$7,049	59.8%
Instructional Support	\$2,847,302	\$2,328	19.7%
Operations	\$2,033,160	\$1,662	14.1%
Other Commitments	\$0	\$0	0.0%
Leadership	\$918,021	\$751	6.4%
Total High School Expenditures	\$14,419,756	\$11,790	100.0%
Total District & %-High School-To-District	\$49,557,647	\$13,177	29.1%