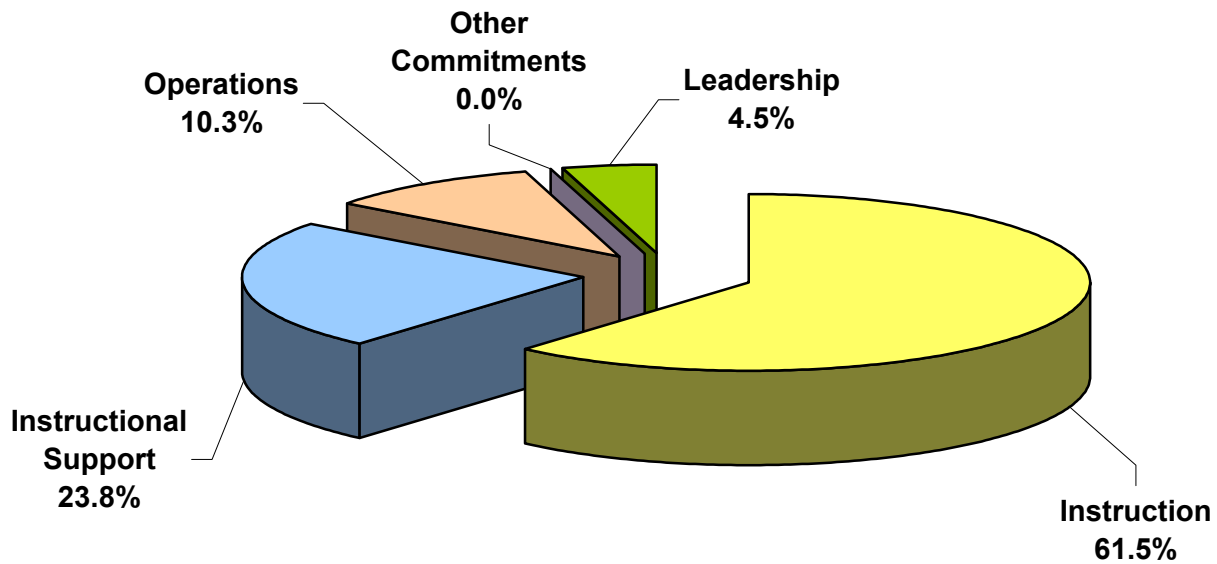
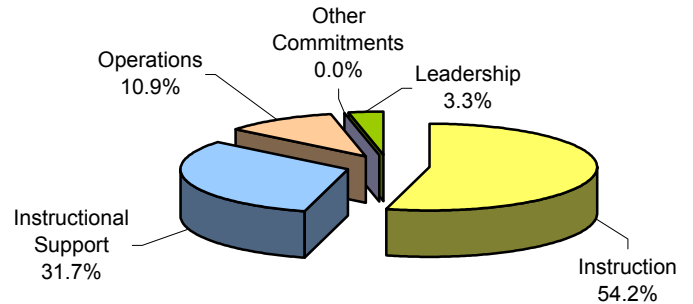


Central Falls School District

July 2005 - June 2006
(Previous Year)

#10 Middle Schools
Expenditures by Five Functions
%-To-Total Middle
July 2006 - June 2007



Middle School Enrollment (ADM): 849	Amount	\$ Per Pupil	%-To-Total Middle
Instruction	\$6,336,821	\$7,464	61.5%
Instructional Support	\$2,448,887	\$2,884	23.8%
Operations	\$1,060,765	\$1,249	10.3%
Other Commitments	\$0	\$0	0.0%
Leadership	\$460,822	\$543	4.5%
Total Middle School Expenditures	\$10,307,294	\$12,141	100.0%
Total District & %-Middle School-To-District	\$51,938,521	\$13,547	19.8%