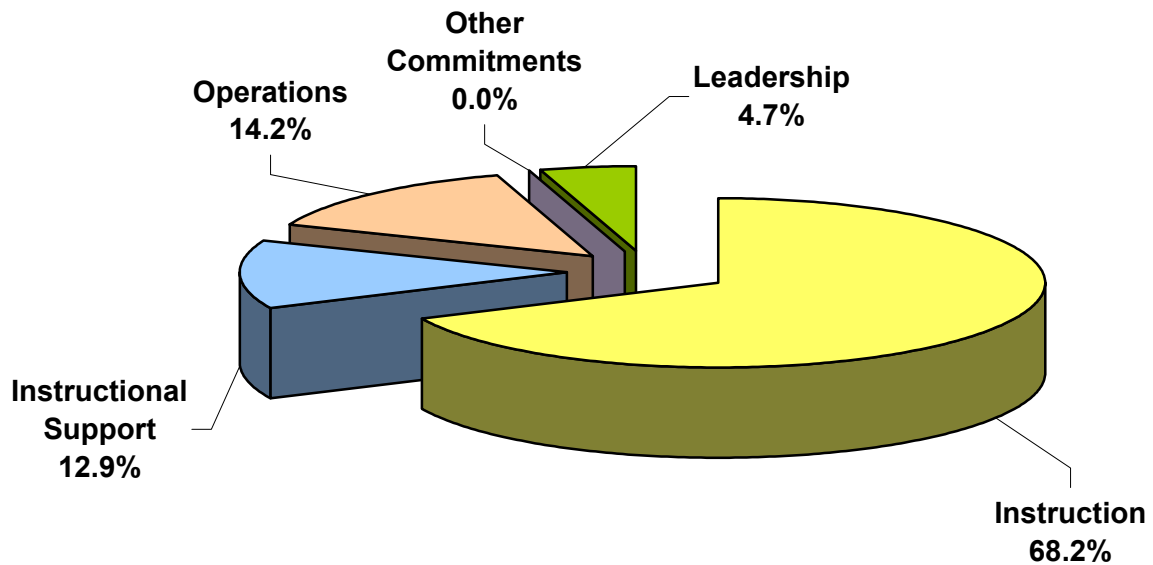
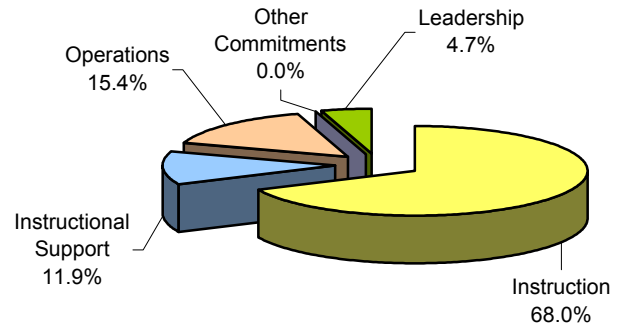


# Lincoln School Department

## #9 Elementary Schools Expenditures by Five Functions %-To-Total Elementary July 2006 - June 2007

July 2005 - June 2006  
(Previous Year)



Elementary School Enrollment (ADM): 1,355	Amount	\$ Per Pupil	%-To-Total Elementary
Instruction	\$13,620,151	\$10,052	68.2%
Instructional Support	\$2,580,165	\$1,904	12.9%
Operations	\$2,847,292	\$2,101	14.2%
Other Commitments	\$0	\$0	0.0%
Leadership	\$934,395	\$690	4.7%
Total Elementary School Expenditures	\$19,982,003	\$14,747	100.0%
Total District & %-Elementary-To-District	\$46,393,142	\$14,110	43.1%