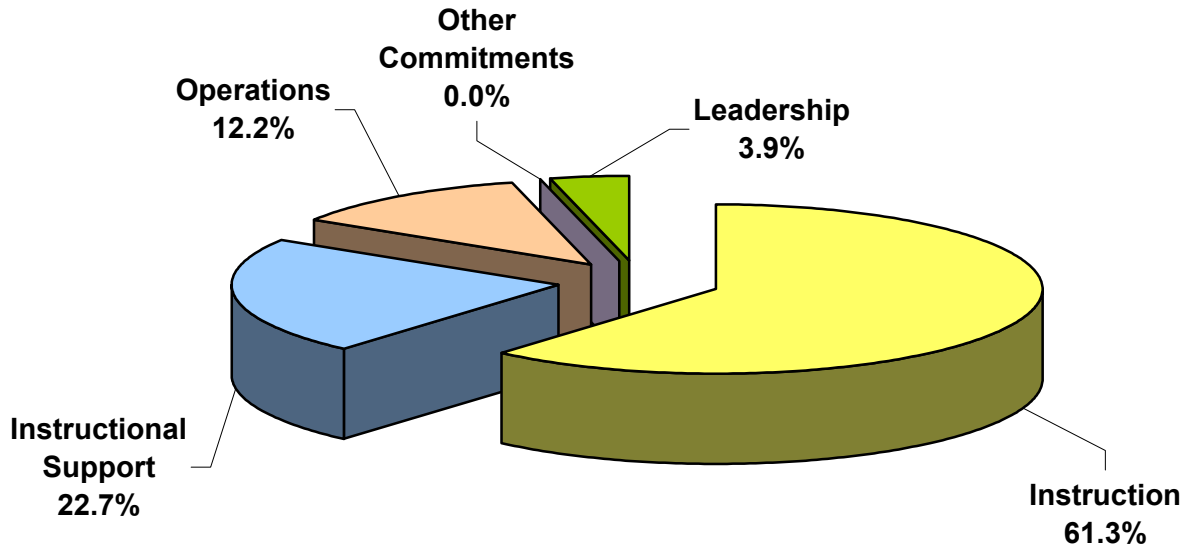
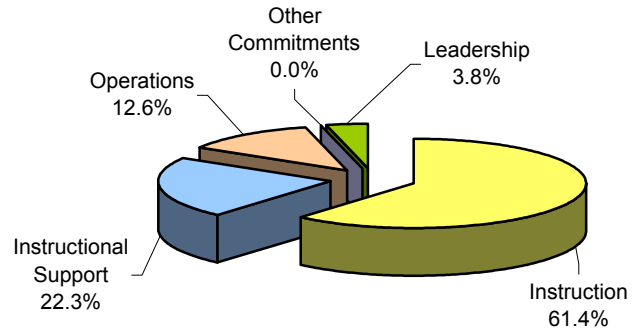


Pawtucket School Department

#9 Elementary Schools Expenditures by Five Functions %-To-Total Elementary July 2006 - June 2007

July 2005 - June 2006
(Previous Year)



Elementary School Enrollment (ADM): 4,461	Amount	\$ Per Pupil	%-To-Total Elementary
Instruction	\$31,227,962	\$7,000	61.3%
Instructional Support	\$11,566,292	\$2,593	22.7%
Operations	\$6,210,759	\$1,392	12.2%
Other Commitments	\$0	\$0	0.0%
Leadership	\$1,967,002	\$441	3.9%
Total Elementary School Expenditures	\$50,972,015	\$11,426	100.0%
Total District & %-Elementary-To-District	\$110,654,887	\$11,658	46.1%