

# South Kingstown School District

## INSTRUCTION

Detail Functions	Per Pupil	% To Total
Instructional Teachers	\$7,349	50.2%
Substitutes	\$138	0.9%
Instructional Parapros	\$289	2.0%
Pupil-Use Technology	\$62	0.4%
Instructional Materials	\$149	1.0%
<b>Total</b>	<b>\$7,987</b>	<b>54.6%</b>

## INSTRUCTIONAL SUPPORT

Detail Functions	Per Pupil	% To Total
Guidance & Counseling	\$321	2.2%
Library & Media	\$219	1.5%
Extracurricular	\$173	1.2%
Student Health/Services	\$298	2.0%
Curriculum Development	\$79	0.5%
Staff Development	\$88	0.6%
Sabbaticals	\$0	0.0%
Program Management	\$140	1.0%
Therapists, Psychologists	\$1,393	9.5%
<b>Total</b>	<b>\$2,710</b>	<b>18.5%</b>

## OPERATIONS

Detail Function	Per Pupil	% To Total
Transportation	\$543	3.7%
Food Service	\$278	1.9%
Safety	\$20	0.1%
Building Upkeep	\$955	6.5%
Data Processing	\$110	0.8%
Business Operations	\$196	1.3%
<b>Total</b>	<b>\$2,101</b>	<b>14.4%</b>

## LEADERSHIP

Detail Function	Per Pupil	% To Total
Principals & Asst. Prin	\$375	2.6%
School Office	\$280	1.9%
Deputies & Administrators	\$21	0.1%
Superintendent & Board	\$80	0.5%
Legal	\$15	0.1%
<b>Total</b>	<b>\$771</b>	<b>5.3%</b>

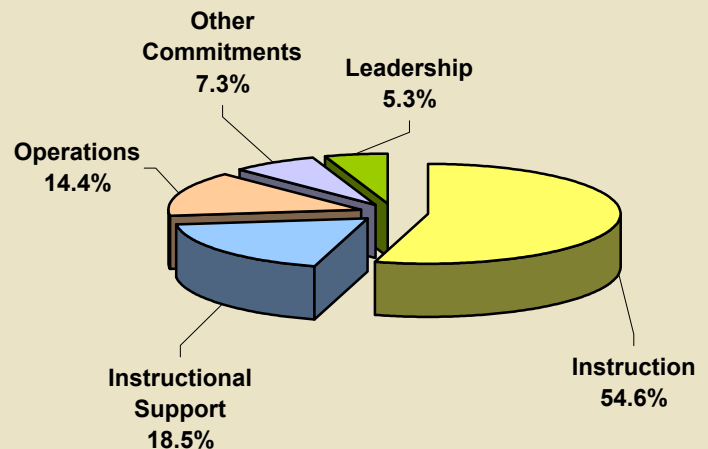
## #2 Total Expenditures

By 5 Major and 32 Detail Functions

July 2006 - June 2007

<b>Expenditures:</b>	<b>\$57,596,272</b>
<b>District Enrollment (ADM):</b>	<b>3,936</b>
<b>District Per Pupil:</b>	<b>\$14,633</b>

(See Chart #2a for Comparison to Last Year)



## OTHER COMMITMENTS

Detail Functions	Per Pupil	% To Total
Budgeted Contingencies	\$0	0.0%
Debt Service	\$0	0.0%
Capital Projects	\$70	0.5%
Pass-Throughs	\$976	6.7%
Retiree Benefits	\$18	0.1%
Enterprise Services	\$0	0.0%
Claims & Settlements	\$1	0.0%
<b>Total</b>	<b>\$1,065</b>	<b>7.3%</b>