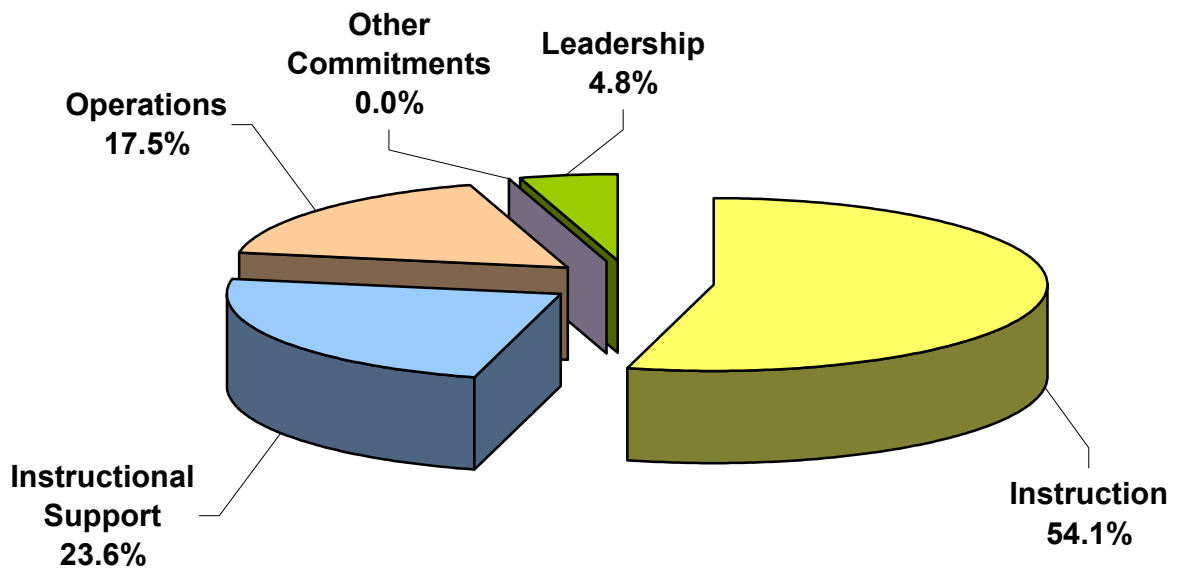
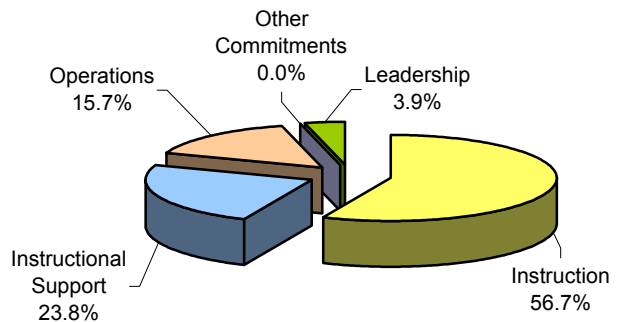


Westerly School Department

July 2005 - June 2006
(Previous Year)

#11 High Schools
Expenditures by Five Functions
%-To-Total High Schools
July 2006 - June 2007



High School Enrollment (ADM): 1,105	Amount	\$ Per Pupil	%-To-Total High Schools
Instruction	\$7,931,376	\$7,178	54.1%
Instructional Support	\$3,464,936	\$3,136	23.6%
Operations	\$2,559,878	\$2,317	17.5%
Other Commitments	\$0	\$0	0.0%
Leadership	\$704,987	\$638	4.8%
Total High School Expenditures	\$14,661,177	\$13,268	100.0%
Total District & %-High School-To-District	\$50,056,065	\$14,298	29.3%