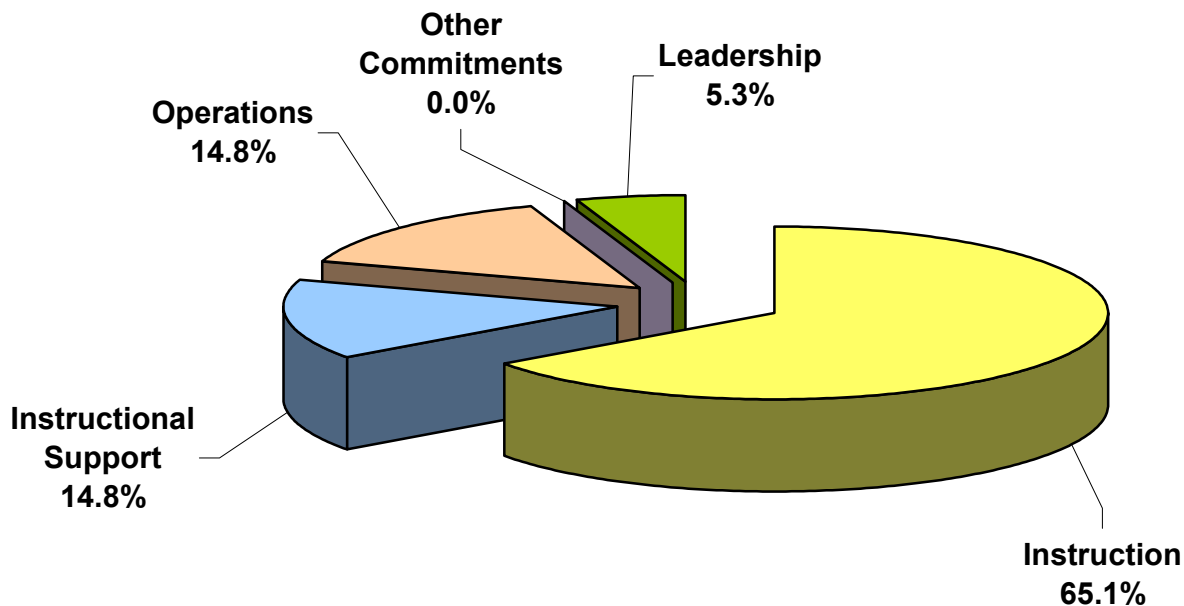
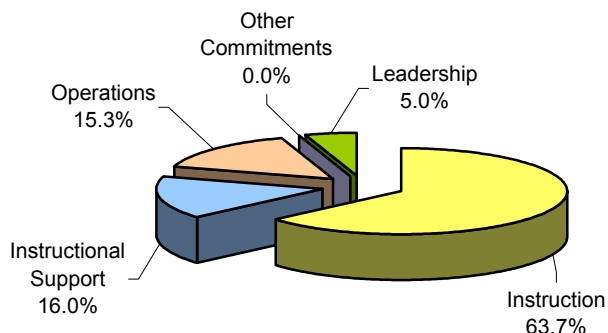


Woonsocket Education Department

#11 High Schools Expenditures by Five Functions %-To-Total High Schools July 2006 - June 2007

July 2005 - June 2006
(Previous Year)



High School Enrollment (ADM): 1,856	Amount	\$ Per Pupil	%-To-Total High Schools
Instruction	\$12,241,386	\$6,596	65.1%
Instructional Support	\$2,786,525	\$1,501	14.8%
Operations	\$2,788,804	\$1,503	14.8%
Other Commitments	\$0	\$0	0.0%
Leadership	\$993,357	\$535	5.3%
Total High School Expenditures	\$18,810,073	\$10,135	100.0%
Total District & %-High School-To-District	\$73,516,737	\$11,498	25.6%