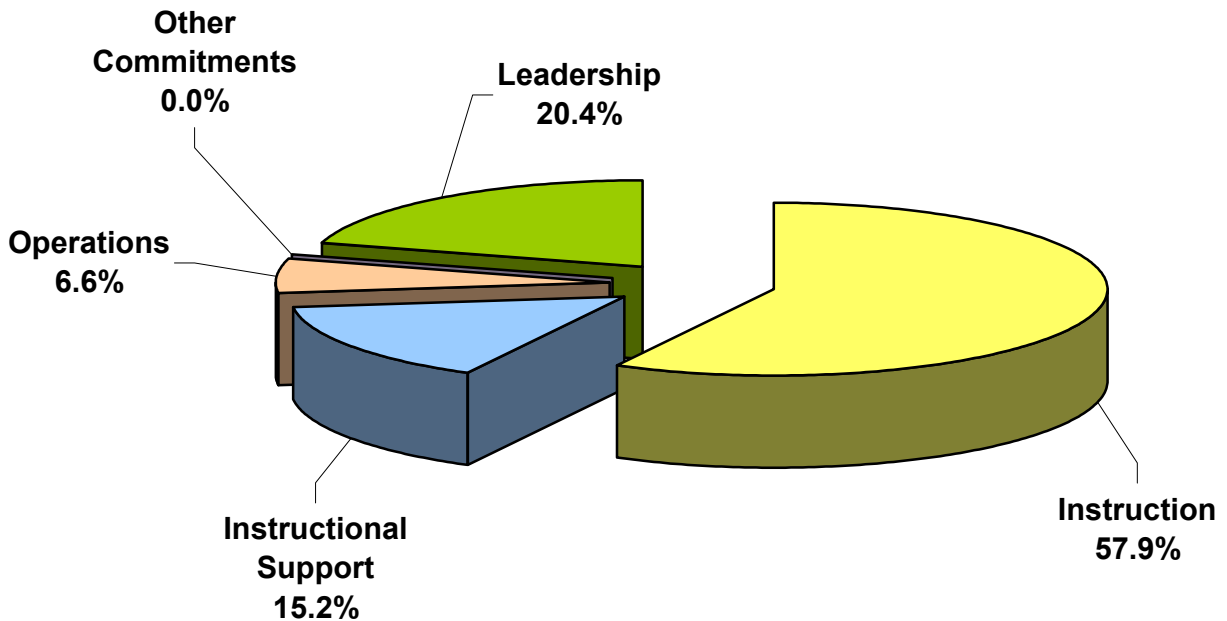
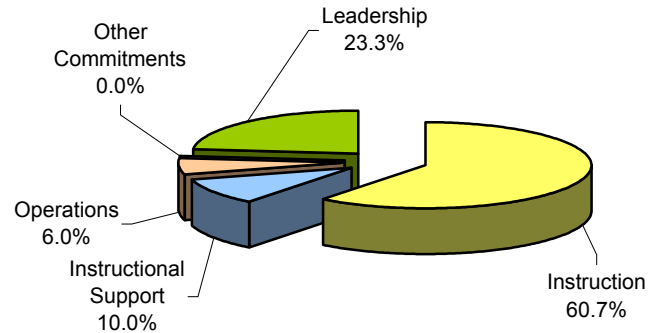


Beacon Charter School

#11 High Schools Expenditures by Five Functions %-To-Total High Schools July 2006 - June 2007

July 2005 - June 2006
(Previous Year)



High School Enrollment (ADM): 126	Amount	\$ Per Pupil	%-To-Total High Schools
Instruction	\$737,622	\$5,854	57.9%
Instructional Support	\$193,206	\$1,533	15.2%
Operations	\$83,503	\$663	6.6%
Other Commitments	\$0	\$0	0.0%
Leadership	\$260,239	\$2,065	20.4%
Total High School Expenditures	\$1,274,571	\$10,116	100.0%
Total District & %-High School-To-District	\$1,567,404	\$12,440	81.3%