

ESSENTIAL ELEMENT, LINKAGE LEVELS, AND MINI-MAP

ELA: GRADE 4

ELA.EE.RL.4.1

Grade-Level Standard	DLM Essential Element	Linkage Levels
ELA.RL.4.1 Refer to details and examples in a text when explaining what the text says explicitly and when drawing inferences from the text	ELA.EE.RL.4.1 Use details from the text to recount what the text says	Initial Precursor: <ul style="list-style-type: none"> Can recognize when he or she encounters familiar people, objects, places, and events Distal Precursor: <ul style="list-style-type: none"> Can identify the behavior and actions of specific characters in a familiar story Proximal Precursor: <ul style="list-style-type: none"> Student can identify the explicitly-stated actions of characters in a story Target: <ul style="list-style-type: none"> Student can recount events from a narrative using details. They may not be able to provide a complete summary or tell the details in temporal order but the details are accurate Successor: <ul style="list-style-type: none"> Can recount key details of a story

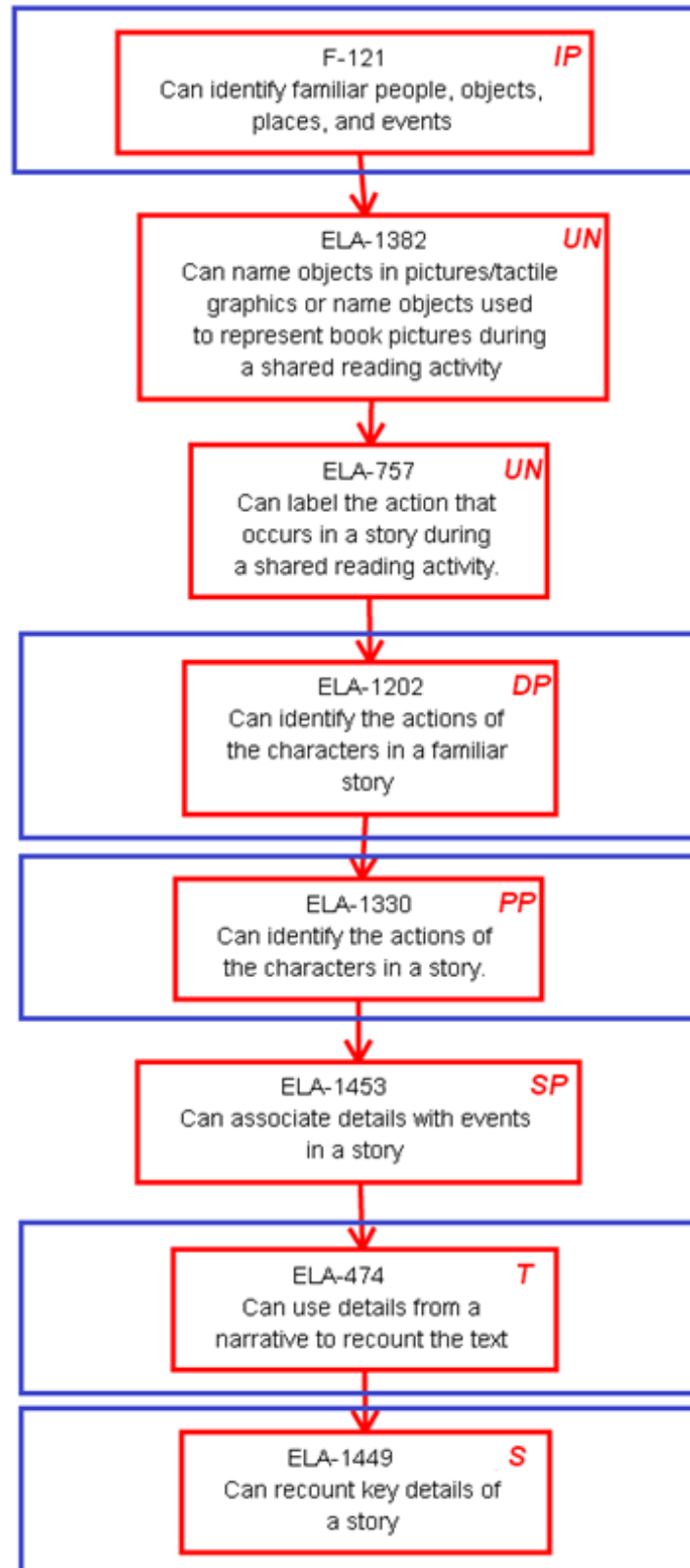
© 2018 The Dynamic Learning Maps Essential Elements, linkage levels, and nodes are copyrighted by the University of Kansas Center for Research. Linkage levels and nodes are available for use by educators in DLM states but may not be used by commercial entities without written permission. Linkage level information and nodes may not be altered by anyone without express written permission from the University of Kansas Center for Research.

A diagram showing the relationship of nodes in the mini-map appears below.

Key to map codes in upper right corner of node boxes:

IP	Initial Precursor	SP	Supporting
DP	Distal Precursor	S	Successor
PP	Proximal Precursor	UN	Untested
T	Target		

ELA.EE.RL.4.1 - Use details from the text to recount what the text says.



ESSENTIAL ELEMENT, LINKAGE LEVELS, AND MINI-MAP

ELA: GRADE 4

ELA.EE.RL.4.3

Grade-Level Standard	DLM Essential Element	Linkage Levels
ELA.RL.4.3 Describe in depth a character, setting, or event in a story or drama, drawing on specific details in the text (e.g. a character's thoughts, words, or actions)	ELA.EE.RL.4.3 Use details from the text to describe characters in the story	Initial Precursor: <ul style="list-style-type: none"> Can indicate an object when it is referred to by name Distal Precursor: <ul style="list-style-type: none"> Can identify elements in a story (characters, other key details in the text) when asked Proximal Precursor: <ul style="list-style-type: none"> Can identify the key elements in a story, including the main characters, setting, and the major events Target: <ul style="list-style-type: none"> Can describe characters in a narrative using appropriate words, rather than reacting to/relying on the illustrations Successor: <ul style="list-style-type: none"> Can use details from a narrative to describe characters, setting, and events (students may not identify specific key details, but are able to identify additional information about a story)

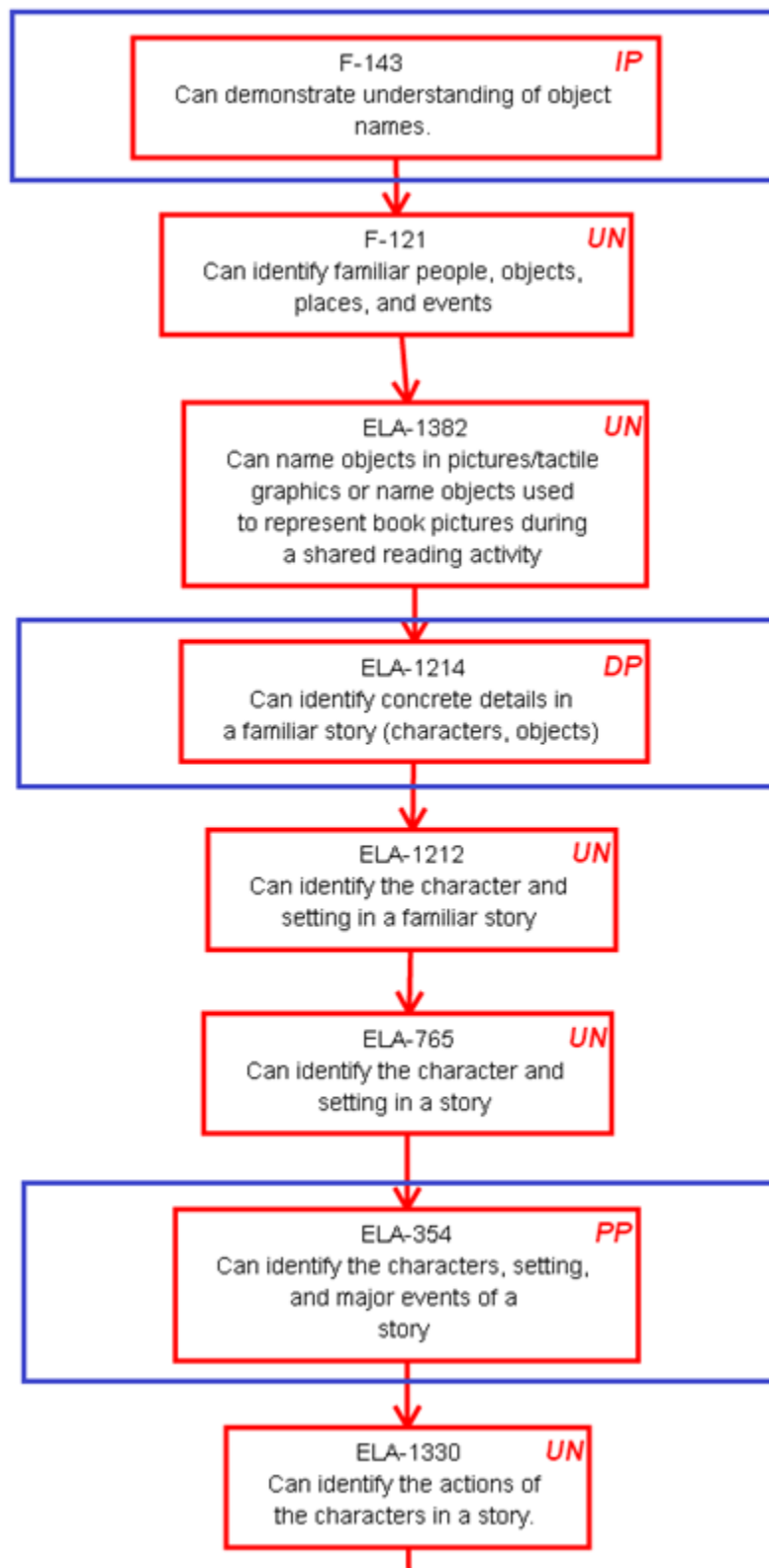
© 2018 The Dynamic Learning Maps Essential Elements, linkage levels, and nodes are copyrighted by the University of Kansas Center for Research. Linkage levels and nodes are available for use by educators in DLM states but may not be used by commercial entities without written permission. Linkage level information and nodes may not be altered by anyone without express written permission from the University of Kansas Center for Research.

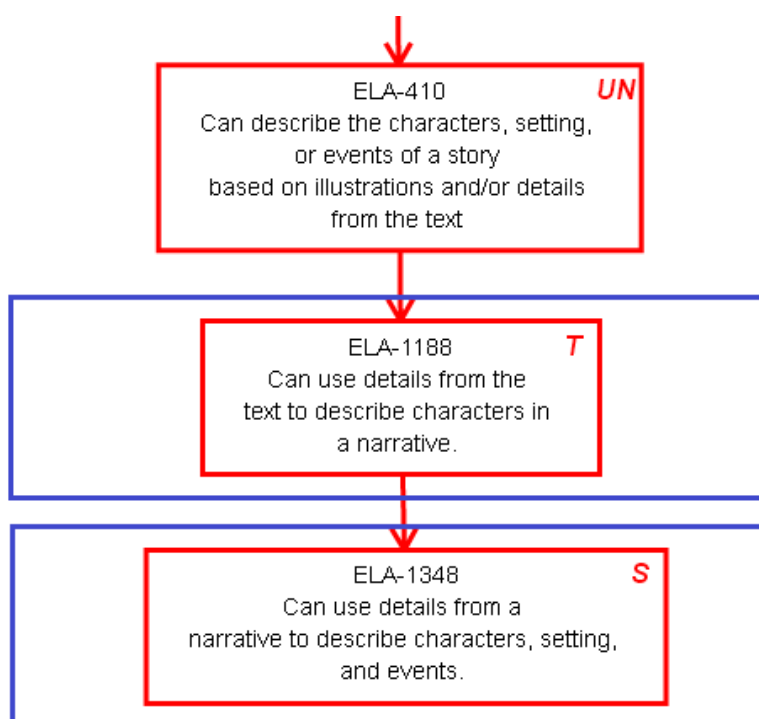
A diagram showing the relationship of nodes in the mini-map appears below.

Key to map codes in upper right corner of node boxes:

IP	Initial Precursor	SP	Supporting
DP	Distal Precursor	S	Successor
PP	Proximal Precursor	UN	Untested
T	Target		

ELA.EE.RL.4.3 - Use details from the text to describe characters in the story.





ESSENTIAL ELEMENT, LINKAGE LEVELS, AND MINI-MAP

ELA: GRADE 4

ELA.EE.RL.4.5

Grade-Level Standard	DLM Essential Element	Linkage Levels
ELA.RL.4.5 Explain major differences between poems, drama, and prose, and refer to the structural elements of poems (e.g., verse, rhythm, meter) and drama (e.g., casts of characters, settings, descriptions, dialogue, stage directions) when writing or speaking about a text	ELA.EE.RL.4.5 Identify elements that are characteristic of stories	<p>Initial Precursor:</p> <ul style="list-style-type: none"> Can recognize when he or she encounters familiar people, objects, places, and events <p>Distal Precursor:</p> <ul style="list-style-type: none"> When shown a familiar book ("familiar" means that the student has had several shared reading experiences with the same text), can name the objects shown in the pictures/tactile graphics or the objects representing the book pictures <p>Proximal Precursor:</p> <ul style="list-style-type: none"> Can determine the events that occur at the beginning, middle, and end of a familiar, linear story <p>Target:</p> <ul style="list-style-type: none"> The student can identify characteristic elements of stories in a text, including main character, setting, initiating and resolution events <p>Successor:</p> <ul style="list-style-type: none"> The student will identify an element of the story that undergoes change(s) from beginning to end (e.g., character or setting)

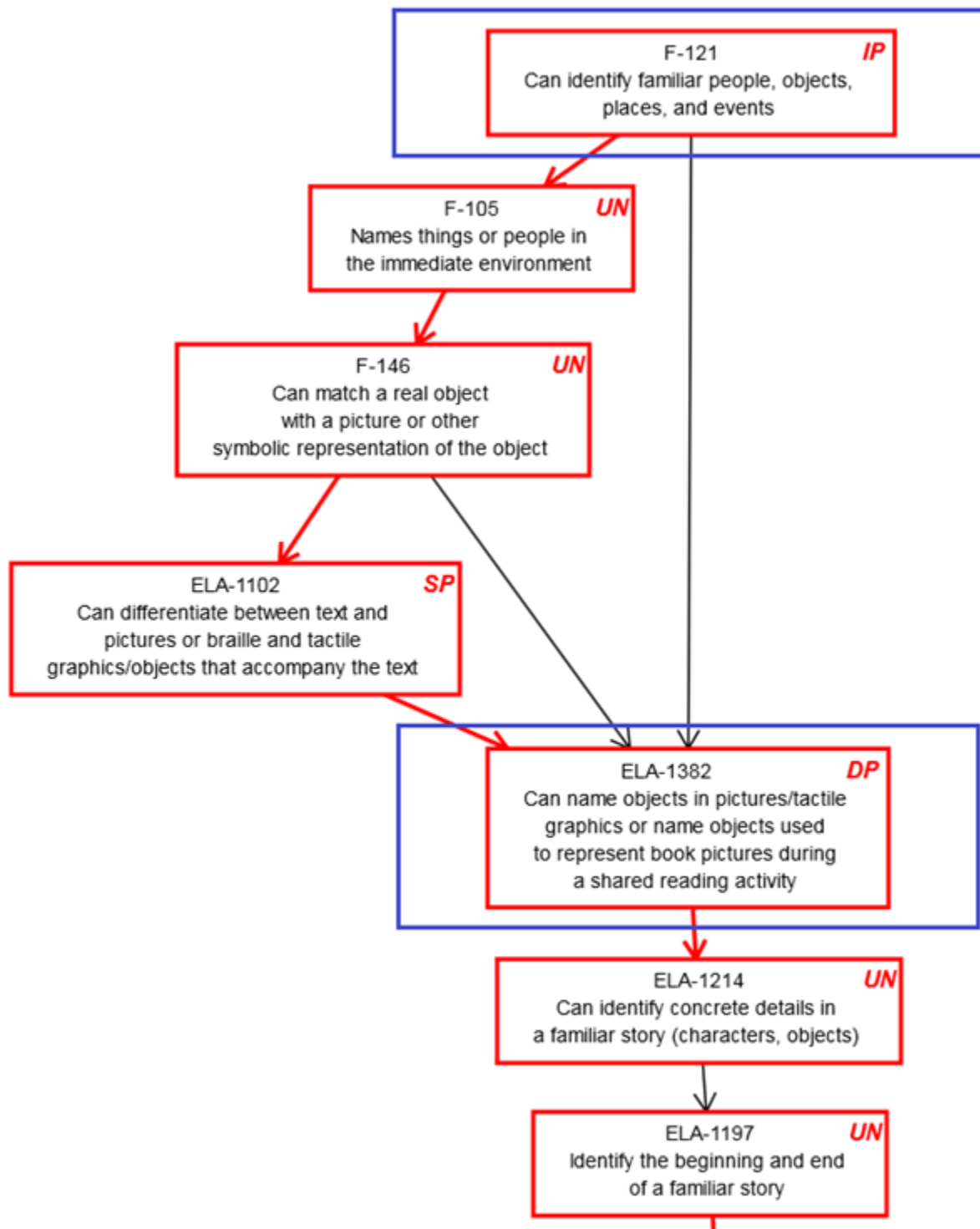
© 2018 The Dynamic Learning Maps Essential Elements, linkage levels, and nodes are copyrighted by the University of Kansas Center for Research. Linkage levels and nodes are available for use by educators in DLM states but may not be used by commercial entities without written permission. Linkage level information and nodes may not be altered by anyone without express written permission from the University of Kansas Center for Research.

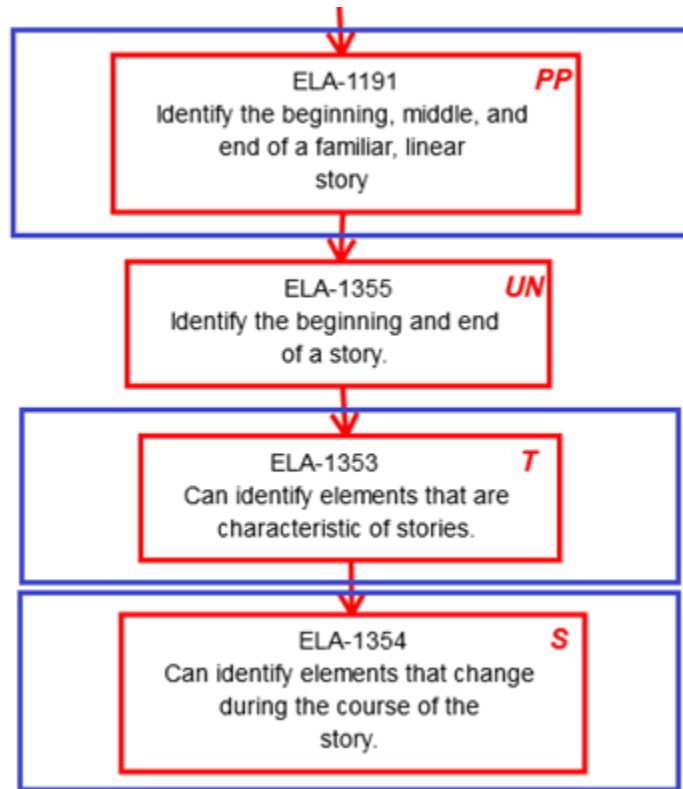
A diagram showing the relationship of nodes in the mini-map appears below.

Key to map codes in upper right corner of node boxes:

IP	Initial Precursor	SP	Supporting
DP	Distal Precursor	S	Successor
PP	Proximal Precursor	UN	Untested
T	Target		

ELA.EE.RL.4.5 - Identify elements that are characteristic of stories.





ESSENTIAL ELEMENT, LINKAGE LEVELS, AND MINI-MAP

ELA: GRADE 4

ELA.EE.RI.4.1

Grade-Level Standard	DLM Essential Element	Linkage Levels
ELA.RI.4.1 Refer to details and examples in a text when explaining what the text says explicitly and when drawing inferences from the text	ELA.EE.RI.4.1 Identify explicit details in an informational text	Initial Precursor: <ul style="list-style-type: none"> Can indicate an object when it is referred to by name Distal Precursor: <ul style="list-style-type: none"> When shown a familiar book ("familiar" means that the student has had several shared reading experiences with the same text), can name the objects shown in the pictures/tactile graphics or the objects representing the book pictures Proximal Precursor: <ul style="list-style-type: none"> Can identify the concrete details mentioned in beginner level informational texts Target: <ul style="list-style-type: none"> Able to identify explicit details in an informational text Successor: <ul style="list-style-type: none"> Can identify words or details to answer a question about explicit information presented in the text

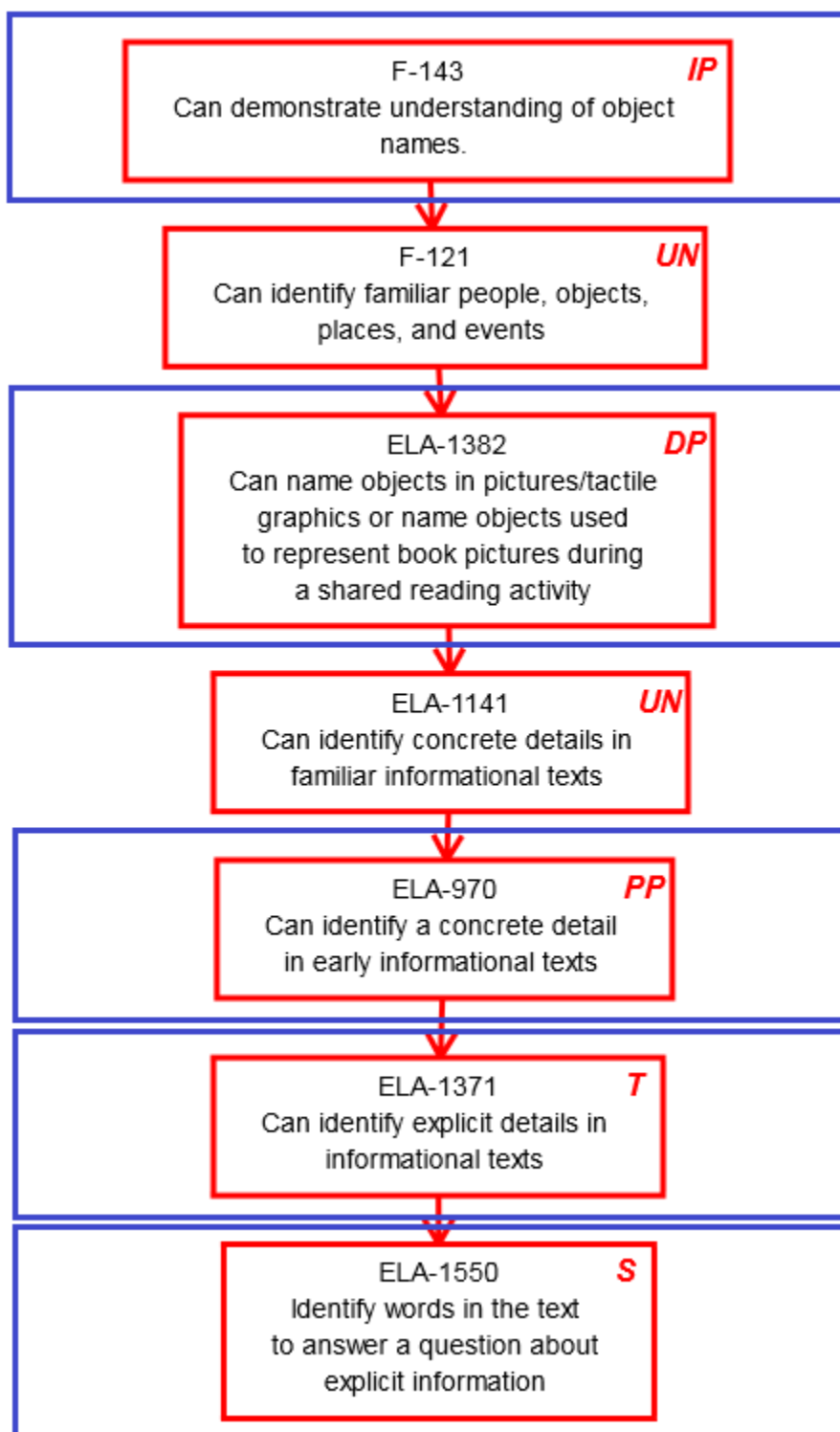
© 2018 The Dynamic Learning Maps Essential Elements, linkage levels, and nodes are copyrighted by the University of Kansas Center for Research. Linkage levels and nodes are available for use by educators in DLM states but may not be used by commercial entities without written permission. Linkage level information and nodes may not be altered by anyone without express written permission from the University of Kansas Center for Research.

A diagram showing the relationship of nodes in the mini-map appears below.

Key to map codes in upper right corner of node boxes:

IP	Initial Precursor	SP	Supporting
DP	Distal Precursor	S	Successor
PP	Proximal Precursor	UN	Untested
T	Target		

ELA.EE.RI.4.1 - Identify explicit details in an informational text.



ESSENTIAL ELEMENT, LINKAGE LEVELS, AND MINI-MAP

ELA: GRADE 4

ELA.EE.RI.4.2

Grade-Level Standard	DLM Essential Element	Linkage Levels
ELA.RI.4.2 Determine the main idea of a text and explain how it is supported by key details; summarize the text	ELA.EE.RI.4.2 Identify the main idea of a text when it is explicitly stated	Initial Precursor: <ul style="list-style-type: none"> Can indicate an object when it is referred to by name Distal Precursor: <ul style="list-style-type: none"> When shown a familiar book ("familiar" means that the student has had several shared reading experiences with the same text), can name the objects shown in the pictures/tactile graphics or the objects representing the book pictures Proximal Precursor: <ul style="list-style-type: none"> Can identify the concrete details, such as individuals, events, or ideas in familiar informational texts Target: <ul style="list-style-type: none"> Can identify the overall, general topic of any brief (no more than a paragraph) familiar informational text Successor: <ul style="list-style-type: none"> Can determine which words contained in an informational text relate to the topic of the text

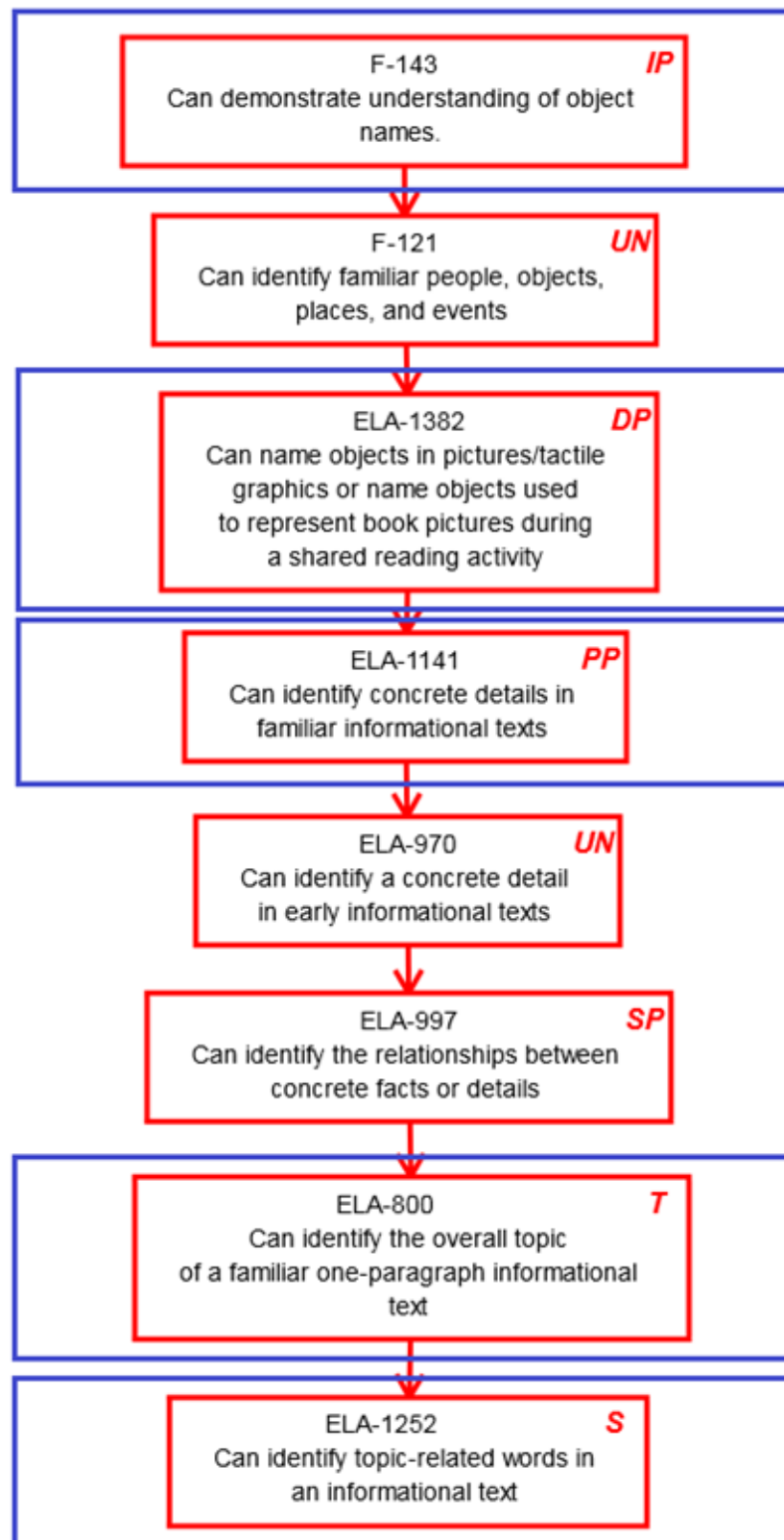
© 2018 The Dynamic Learning Maps Essential Elements, linkage levels, and nodes are copyrighted by the University of Kansas Center for Research. Linkage levels and nodes are available for use by educators in DLM states but may not be used by commercial entities without written permission. Linkage level information and nodes may not be altered by anyone without express written permission from the University of Kansas Center for Research.

A diagram showing the relationship of nodes in the mini-map appears below.

Key to map codes in upper right corner of node boxes:

IP	Initial Precursor	SP	Supporting
DP	Distal Precursor	S	Successor
PP	Proximal Precursor	UN	Untested
T	Target		

ELA.EE.RI.4.2 - Identify the main idea of a text when it is explicitly stated.



ESSENTIAL ELEMENT, LINKAGE LEVELS, AND MINI-MAP

ELA: GRADE 4

ELA.EE.RI.4.3

Grade-Level Standard	DLM Essential Element	Linkage Levels
ELA.RI.4.3 Explain events, procedures, ideas, or concepts in a historical, scientific, or technical text, including what happened and why, based on specific information in the text	ELA.EE.RI.4.3 Identify an explicit detail that is related to an individual, event, or idea in a historical, scientific, or technical text	Initial Precursor: <ul style="list-style-type: none"> Can indicate an object when it is referred to by name Distal Precursor: <ul style="list-style-type: none"> Using their categorical knowledge, can make generalizations about the category to novel instances of that category Proximal Precursor: <ul style="list-style-type: none"> Can identify the concrete details, such as individuals, events, or ideas in familiar informational texts Target: <ul style="list-style-type: none"> Can determine whether a concrete detail is related to an individual, event, or idea discussed in an informational text Successor: <ul style="list-style-type: none"> Can find the similarities between the key details, such as the individuals, events, or ideas, located within an informational text

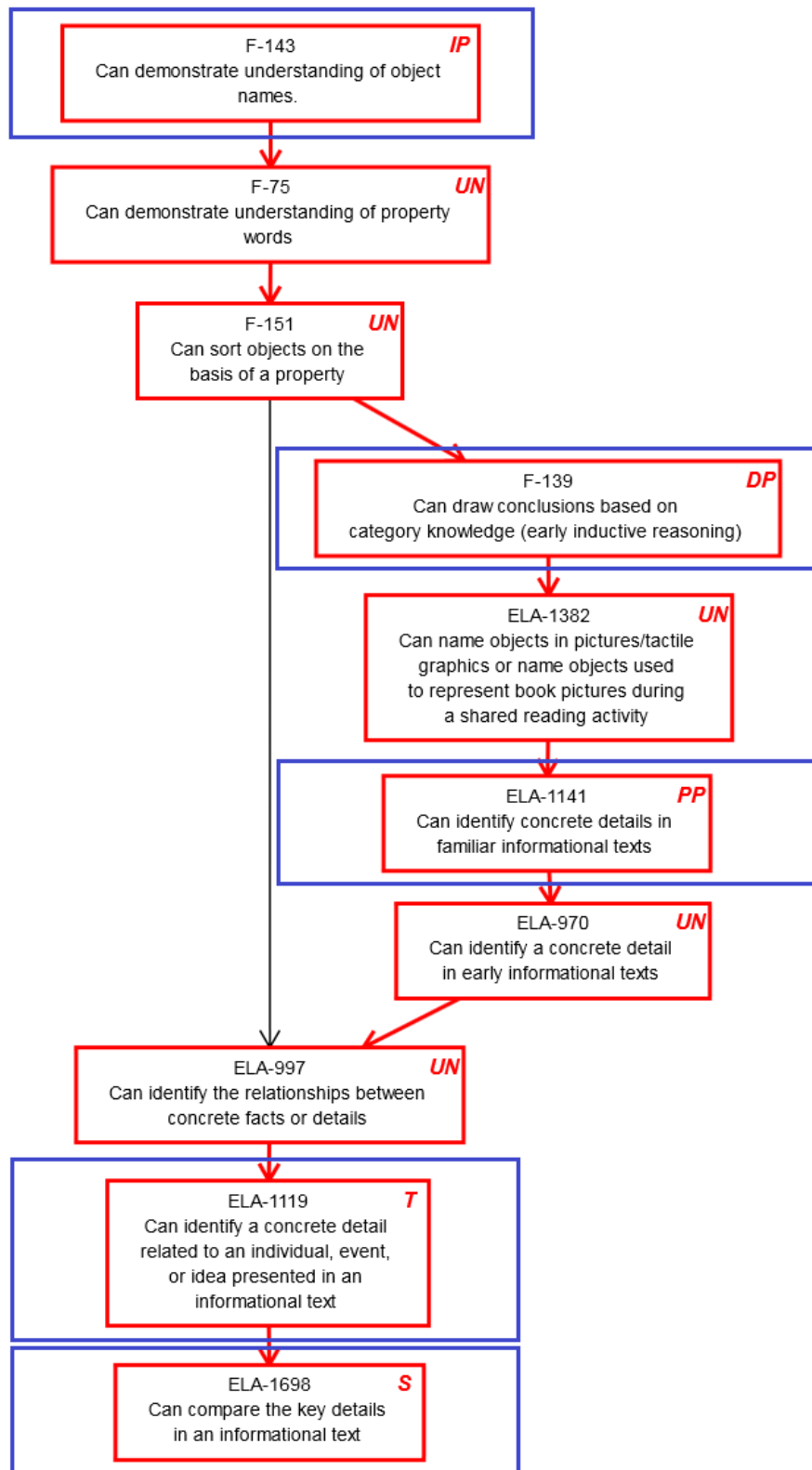
© 2018 The Dynamic Learning Maps Essential Elements, linkage levels, and nodes are copyrighted by the University of Kansas Center for Research. Linkage levels and nodes are available for use by educators in DLM states but may not be used by commercial entities without written permission. Linkage level information and nodes may not be altered by anyone without express written permission from the University of Kansas Center for Research.

A diagram showing the relationship of nodes in the mini-map appears below.

Key to map codes in upper right corner of node boxes:

IP	Initial Precursor	SP	Supporting
DP	Distal Precursor	S	Successor
PP	Proximal Precursor	UN	Untested
T	Target		

ELA.EE.RI.4.3 - Identify an explicit detail that is related to an individual, event, or idea in a historical, scientific, or technical text.



ESSENTIAL ELEMENT, LINKAGE LEVELS, AND MINI-MAP

ELA: GRADE 4

ELA.EE.RI.4.5

Grade-Level Standard	DLM Essential Element	Linkage Levels
ELA.RI.4.5 Describe the overall structure (e.g., chronology, comparison, cause/effect, problem/solution) of events, ideas, concepts, or information in a text or part of a text	ELA.EE.RI.4.5 Identify elements that are characteristic of informational texts	<p>Initial Precursor:</p> <ul style="list-style-type: none"> Can demonstrate an understanding that objects differ in the physical characteristics and can make judgments of similarity or difference based on the physical characteristics of objects <p>Distal Precursor:</p> <ul style="list-style-type: none"> When shown a familiar book ("familiar" means that the student has had several shared reading experiences with the same text), can name the objects shown in the pictures/tactile graphics or the objects representing the book pictures <p>Proximal Precursor:</p> <ul style="list-style-type: none"> Understands that informational texts often provide pictures/illustrations or tactile graphics/objects that supplement the text and can help to provide information or clarify the text <p>Target:</p> <ul style="list-style-type: none"> Can identify elements that are characteristic of informational texts. These elements in the presentation of information, which is organized using text features (that serve to organize information - titles, key words, illustrations/graphics, headings, etc.) and logical presentation of information (rather than event oriented structure). This latter piece will likely need to be introduced instructionally at this node, rather than formally assessed <p>Successor:</p> <ul style="list-style-type: none"> Can determine if an informational text is providing information about events, giving directions, or providing information on a topic

© 2018 The Dynamic Learning Maps Essential Elements, linkage levels, and nodes are copyrighted by the University of Kansas Center for Research. Linkage levels and nodes are

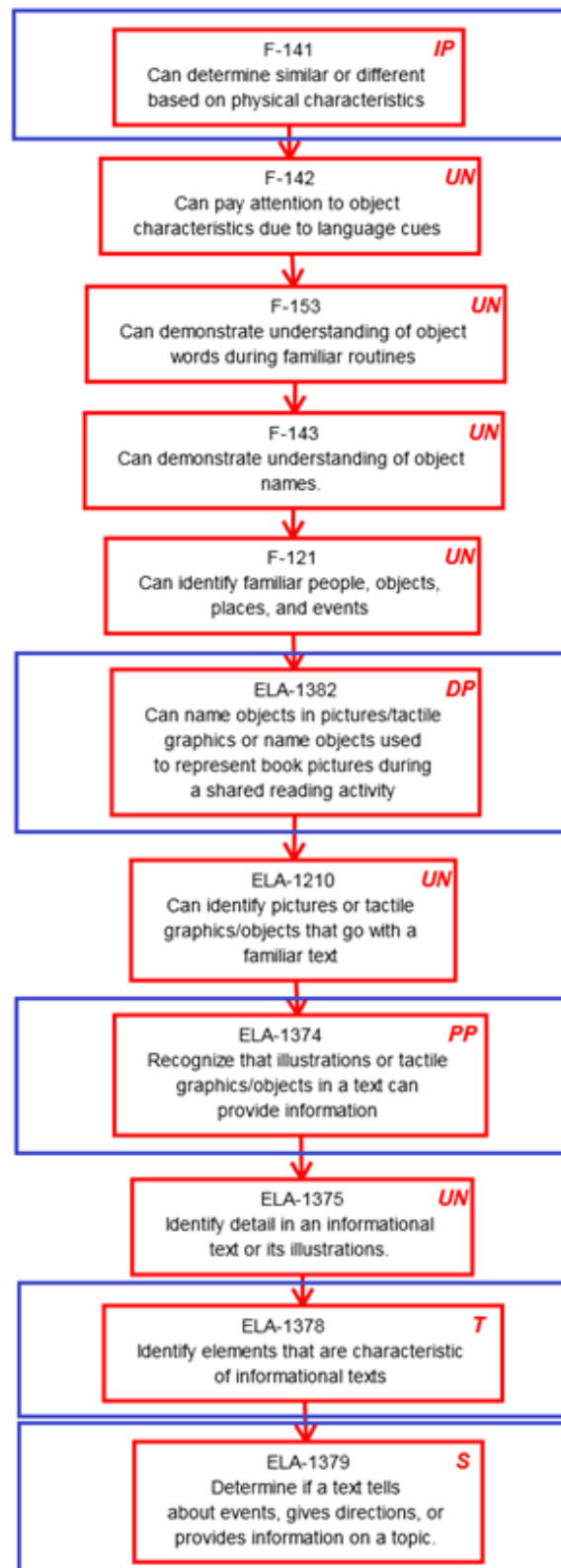
available for use by educators in DLM states but may not be used by commercial entities without written permission. Linkage level information and nodes may not be altered by anyone without express written permission from the University of Kansas Center for Research.

A diagram showing the relationship of nodes in the mini-map appears below.

Key to map codes in upper right corner of node boxes:

IP	Initial Precursor	SP	Supporting
DP	Distal Precursor	S	Successor
PP	Proximal Precursor	UN	Untested
T	Target		

ELA.EE.RI.4.5 - Identify elements that are characteristic of informational texts.



ESSENTIAL ELEMENT, LINKAGE LEVELS, AND MINI-MAP

ELA: GRADE 4

ELA.EE.RL.4.2

Grade-Level Standard	DLM Essential Element	Linkage Levels
ELA.RL.4.2 Determine a theme of a story, drama, or poem from details in the text; summarize the text	ELA.EE.RL.4.2 Identify the theme or central idea of a familiar story, drama or poem	Initial Precursor: <ul style="list-style-type: none"> Can recognize when he or she encounters familiar people, objects, places, and events Distal Precursor: <ul style="list-style-type: none"> Can identify the major events of a familiar story Proximal Precursor: <ul style="list-style-type: none"> Can identify and recall how characters' actions affect the consequences that occur in the story afterwards Target: <ul style="list-style-type: none"> Can identify the theme of a familiar story, which includes a short, concise sentence about the overall meaning of the narrative Successor: <ul style="list-style-type: none"> Can identify the theme of a story, which includes a short, concise sentence about the overall meaning of the narrative

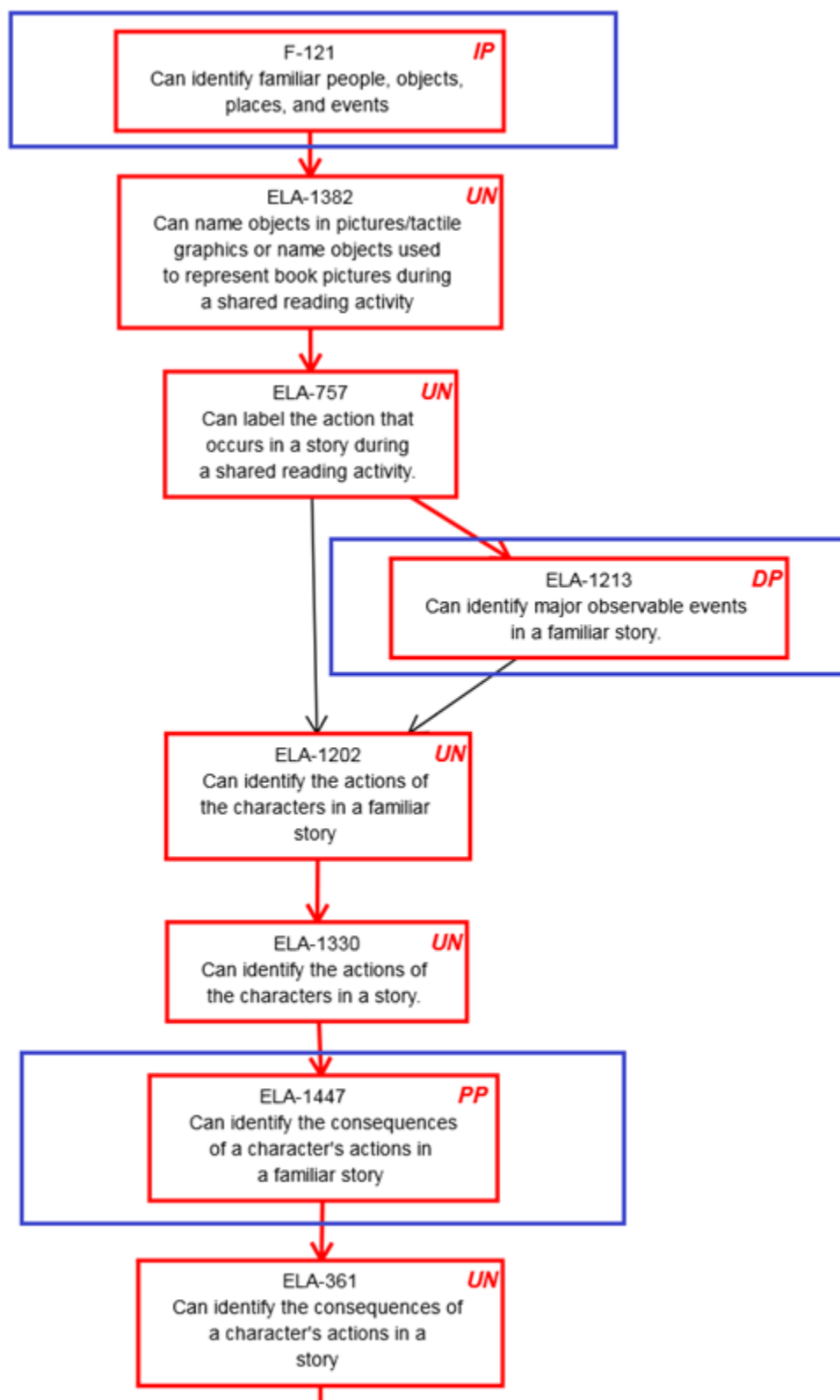
© 2018 The Dynamic Learning Maps Essential Elements, linkage levels, and nodes are copyrighted by the University of Kansas Center for Research. Linkage levels and nodes are available for use by educators in DLM states but may not be used by commercial entities without written permission. Linkage level information and nodes may not be altered by anyone without express written permission from the University of Kansas Center for Research.

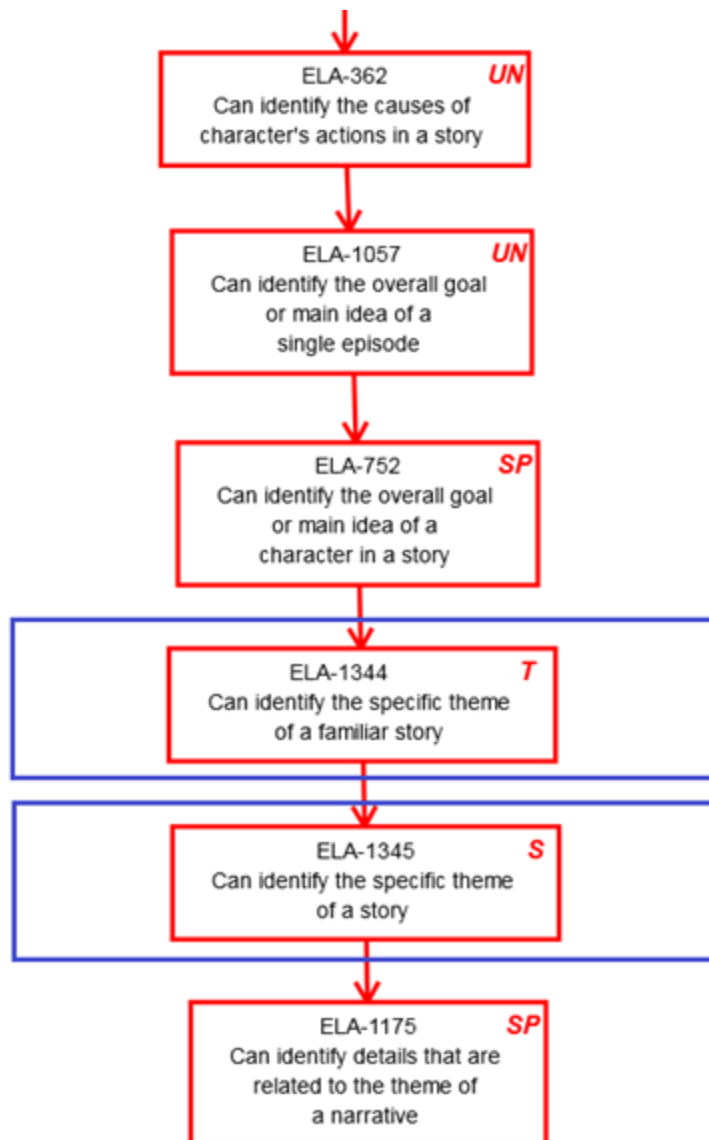
A diagram showing the relationship of nodes in the mini-map appears below.

Key to map codes in upper right corner of node boxes:

IP	Initial Precursor	SP	Supporting
DP	Distal Precursor	S	Successor
PP	Proximal Precursor	UN	Untested
T	Target		

ELA.EE.RL.4.2 - Identify the theme or central idea of a familiar story, drama or poem.





ESSENTIAL ELEMENT, LINKAGE LEVELS, AND MINI-MAP

ELA: GRADE 4

ELA.EE.RL.4.4

Grade-Level Standard	DLM Essential Element	Linkage Levels
ELA.RL.4.4 Determine the meaning of words and phrases as they are used in a text, including those that allude to significant characters found in mythology (e.g., Herculean)	ELA.EE.RL.4.4 Determine the meaning of words in a text	Initial Precursor: <ul style="list-style-type: none"> Can indicate an object when it is referred to by name Distal Precursor: <ul style="list-style-type: none"> Can determine when two words have the same, similar, or different meanings or whether meanings of a single word are the same or different Proximal Precursor: <ul style="list-style-type: none"> Can ascertain which words or phrases fit the meaning of literal sentences in a text and can complete those sentences by choosing the best ones Target: <ul style="list-style-type: none"> Can identify simple semantic definitions for unambiguous words in a text Successor: <ul style="list-style-type: none"> Can understand that words can have multiple meanings that may include a concrete and psychological meaning (e.g., "sweet")

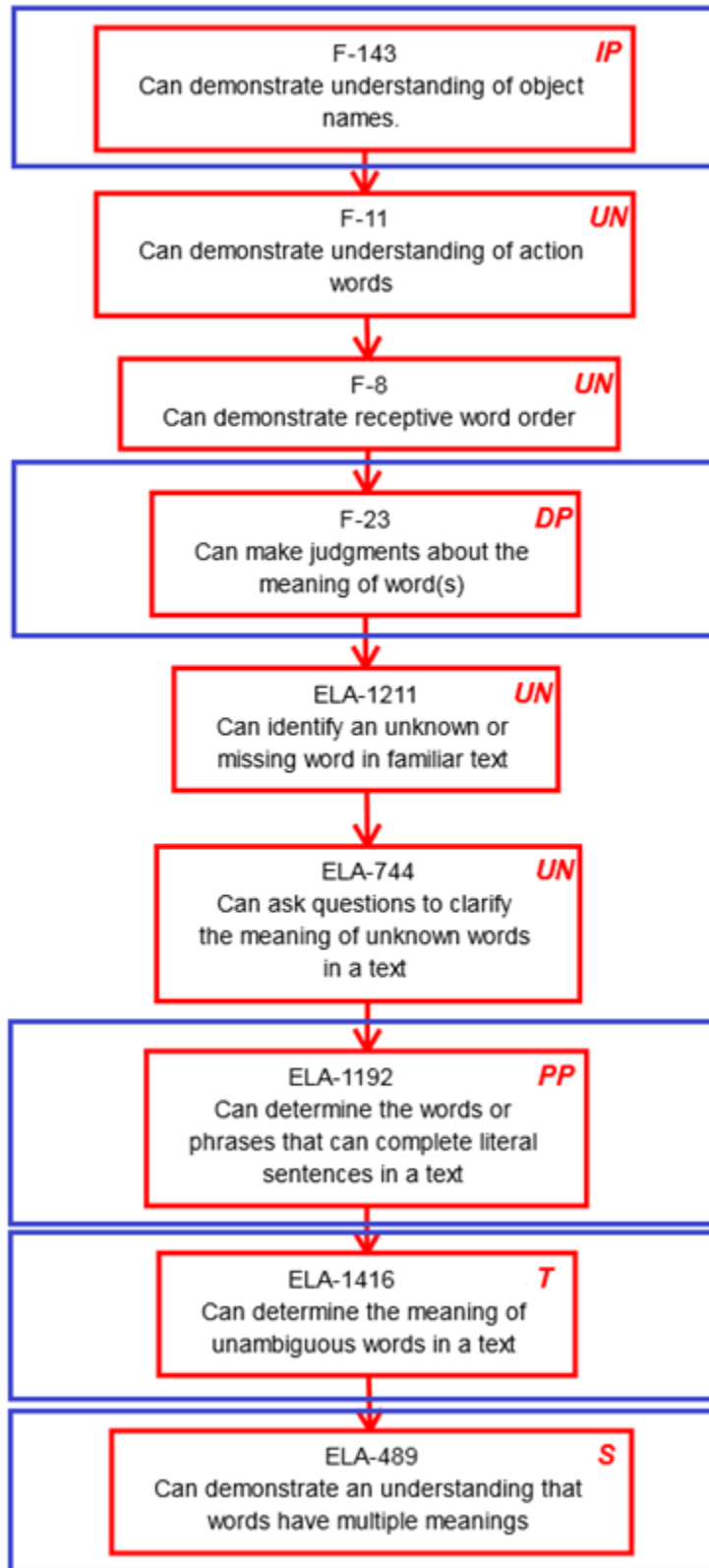
© 2018 The Dynamic Learning Maps Essential Elements, linkage levels, and nodes are copyrighted by the University of Kansas Center for Research. Linkage levels and nodes are available for use by educators in DLM states but may not be used by commercial entities without written permission. Linkage level information and nodes may not be altered by anyone without express written permission from the University of Kansas Center for Research.

A diagram showing the relationship of nodes in the mini-map appears below.

Key to map codes in upper right corner of node boxes:

IP	Initial Precursor	SP	Supporting
DP	Distal Precursor	S	Successor
PP	Proximal Precursor	UN	Untested
T	Target		

ELA.EE.RL.4.4 - Determine the meaning of words in a text.



ESSENTIAL ELEMENT, LINKAGE LEVELS, AND MINI-MAP

ELA: GRADE 4

ELA.EE.RL.4.6

Grade-Level Standard	DLM Essential Element	Linkage Levels
ELA.RL.4.6 Compare and contrast the point of view from which different stories are narrated, including the difference between first- and third-person narrations	ELA.EE.RL.4.6 Identify the narrator of a story	Initial Precursor: <ul style="list-style-type: none"> Can indicate an object when it is referred to by name Distal Precursor: <ul style="list-style-type: none"> Can identify the behavior and actions of specific characters in a familiar story Proximal Precursor: <ul style="list-style-type: none"> Student can identify the explicitly-stated actions of characters in a story Target: <ul style="list-style-type: none"> Can determine who the narrator is in a story he or she is reading Successor: <ul style="list-style-type: none"> Can determine what the point of view for the narrator of a story is

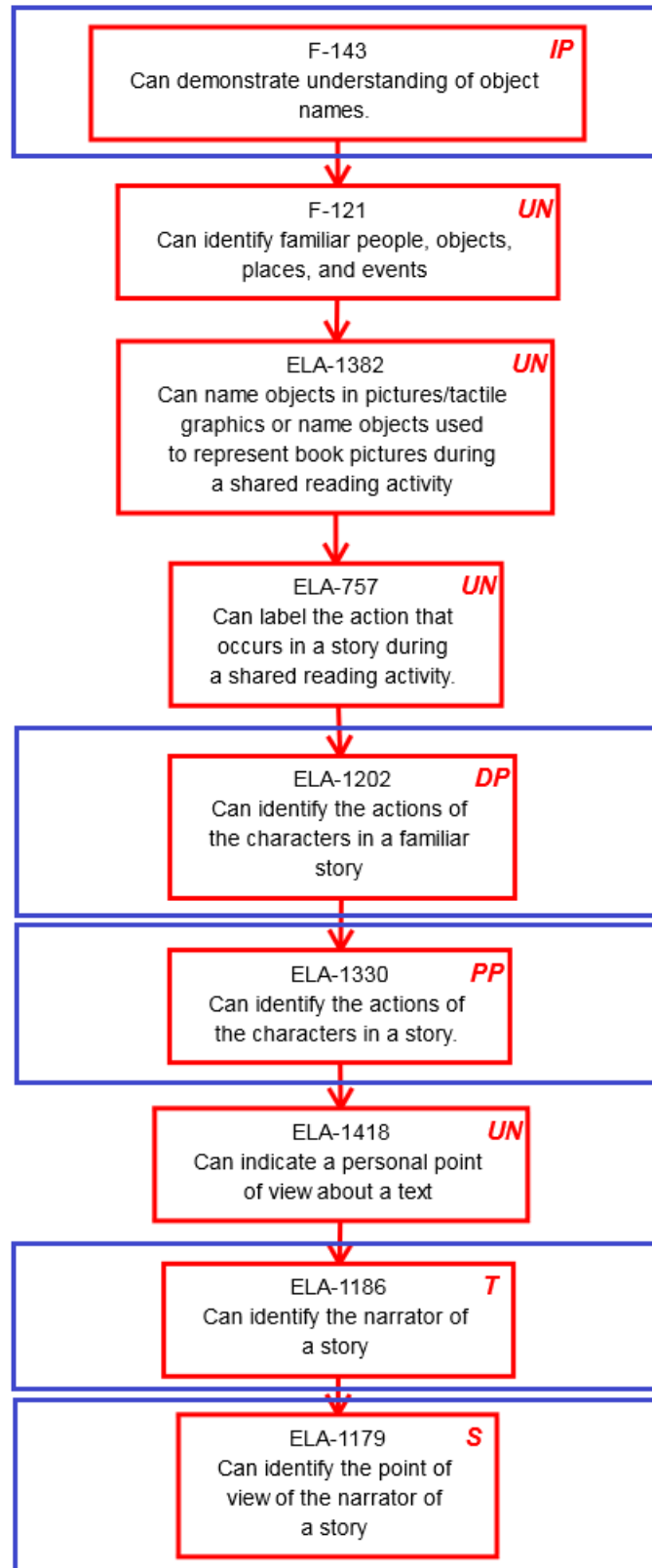
© 2018 The Dynamic Learning Maps Essential Elements, linkage levels, and nodes are copyrighted by the University of Kansas Center for Research. Linkage levels and nodes are available for use by educators in DLM states but may not be used by commercial entities without written permission. Linkage level information and nodes may not be altered by anyone without express written permission from the University of Kansas Center for Research.

A diagram showing the relationship of nodes in the mini-map appears below.

Key to map codes in upper right corner of node boxes:

IP	Initial Precursor	SP	Supporting
DP	Distal Precursor	S	Successor
PP	Proximal Precursor	UN	Untested
T	Target		

ELA.EE.RL.4.6 - Identify the narrator of a story.



ESSENTIAL ELEMENT, LINKAGE LEVELS, AND MINI-MAP

ELA: GRADE 4

ELA.EE.RI.4.4

Grade-Level Standard	DLM Essential Element	Linkage Levels
ELA.RI.4.4 Determine the meaning of general academic and domain-specific words or phrases in a text relevant to a grade 4 topic or subject area	ELA.EE.RI.4.4 Determine meaning of words in text	Initial Precursor: <ul style="list-style-type: none"> Can indicate an object when it is referred to by name Distal Precursor: <ul style="list-style-type: none"> Can determine when two words have the same, similar, or different meanings or whether meanings of a single word are the same or different Proximal Precursor: <ul style="list-style-type: none"> Can ascertain which words or phrases fit the meaning of literal sentences in a text and can complete those sentences by choosing the best ones Target: <ul style="list-style-type: none"> Can identify simple semantic definitions for unambiguous words in a text Successor: <ul style="list-style-type: none"> Can understand that words can have multiple meanings that may include a concrete and psychological meaning (e.g., "sweet")

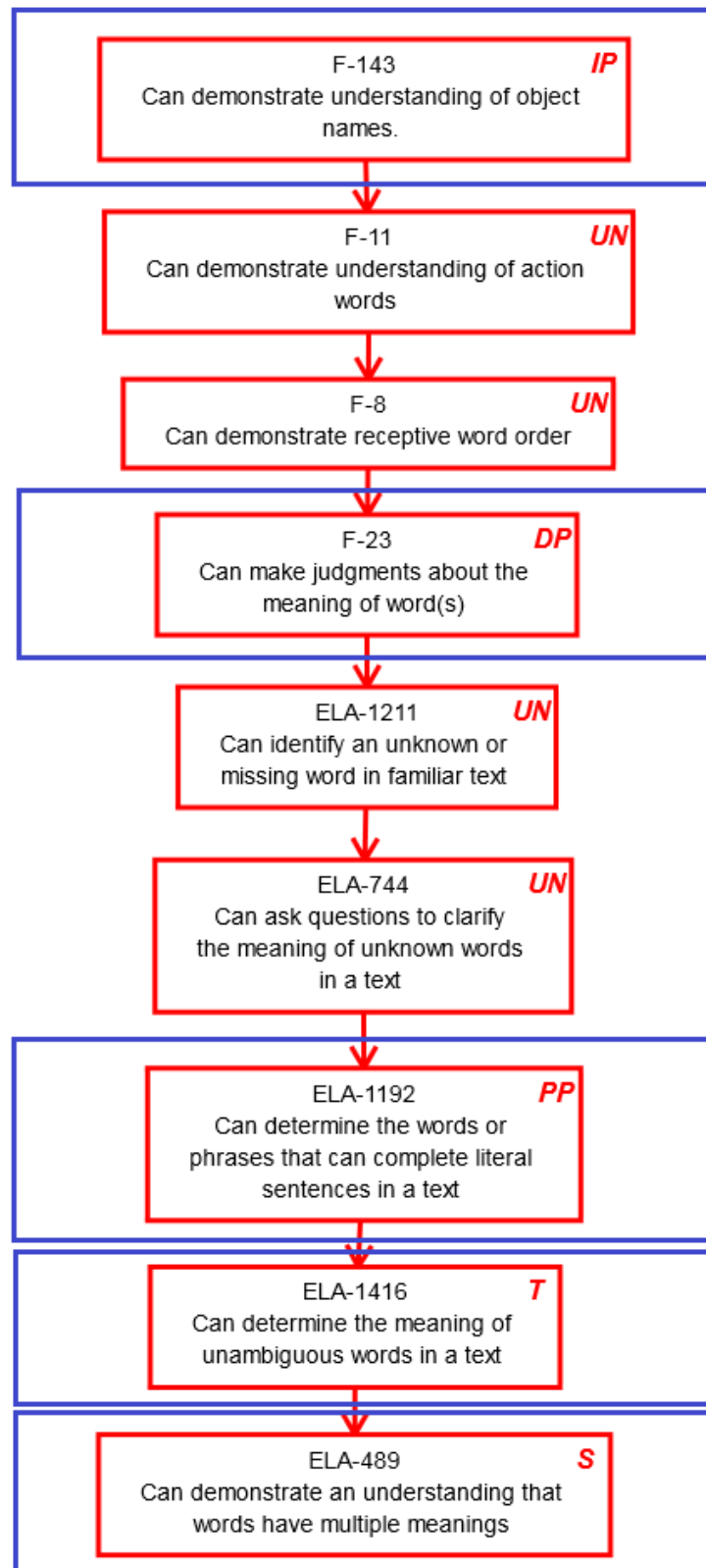
© 2018 The Dynamic Learning Maps Essential Elements, linkage levels, and nodes are copyrighted by the University of Kansas Center for Research. Linkage levels and nodes are available for use by educators in DLM states but may not be used by commercial entities without written permission. Linkage level information and nodes may not be altered by anyone without express written permission from the University of Kansas Center for Research.

A diagram showing the relationship of nodes in the mini-map appears below.

Key to map codes in upper right corner of node boxes:

IP	Initial Precursor	SP	Supporting
DP	Distal Precursor	S	Successor
PP	Proximal Precursor	UN	Untested
T	Target		

ELA.EE.RI.4.4 - Determine meaning of words in text.



ESSENTIAL ELEMENT, LINKAGE LEVELS, AND MINI-MAP

ELA: GRADE 4

ELA.EE.RI.4.8

Grade-Level Standard	DLM Essential Element	Linkage Levels
ELA.RI.4.8 Explain how an author uses reasons and evidence to support particular points in a text	ELA.EE.RI.4.8 Identify one or more reasons supporting a specific point in an informational text	<p>Initial Precursor:</p> <ul style="list-style-type: none"> When attending, react to a change to an object or situation <p>Distal Precursor:</p> <ul style="list-style-type: none"> Can identify the concrete details, such as individuals, events, or ideas in familiar informational texts <p>Proximal Precursor:</p> <ul style="list-style-type: none"> Can determine what the points are that the author of an unfamiliar informational text is trying to communicate to the reader <p>Target:</p> <ul style="list-style-type: none"> Can provide the reasons an author includes (i.e. details) that support the points of an informational text <p>Successor:</p> <ul style="list-style-type: none"> Can find out how specific points made by an author in an informational text relate to the reasons supporting it

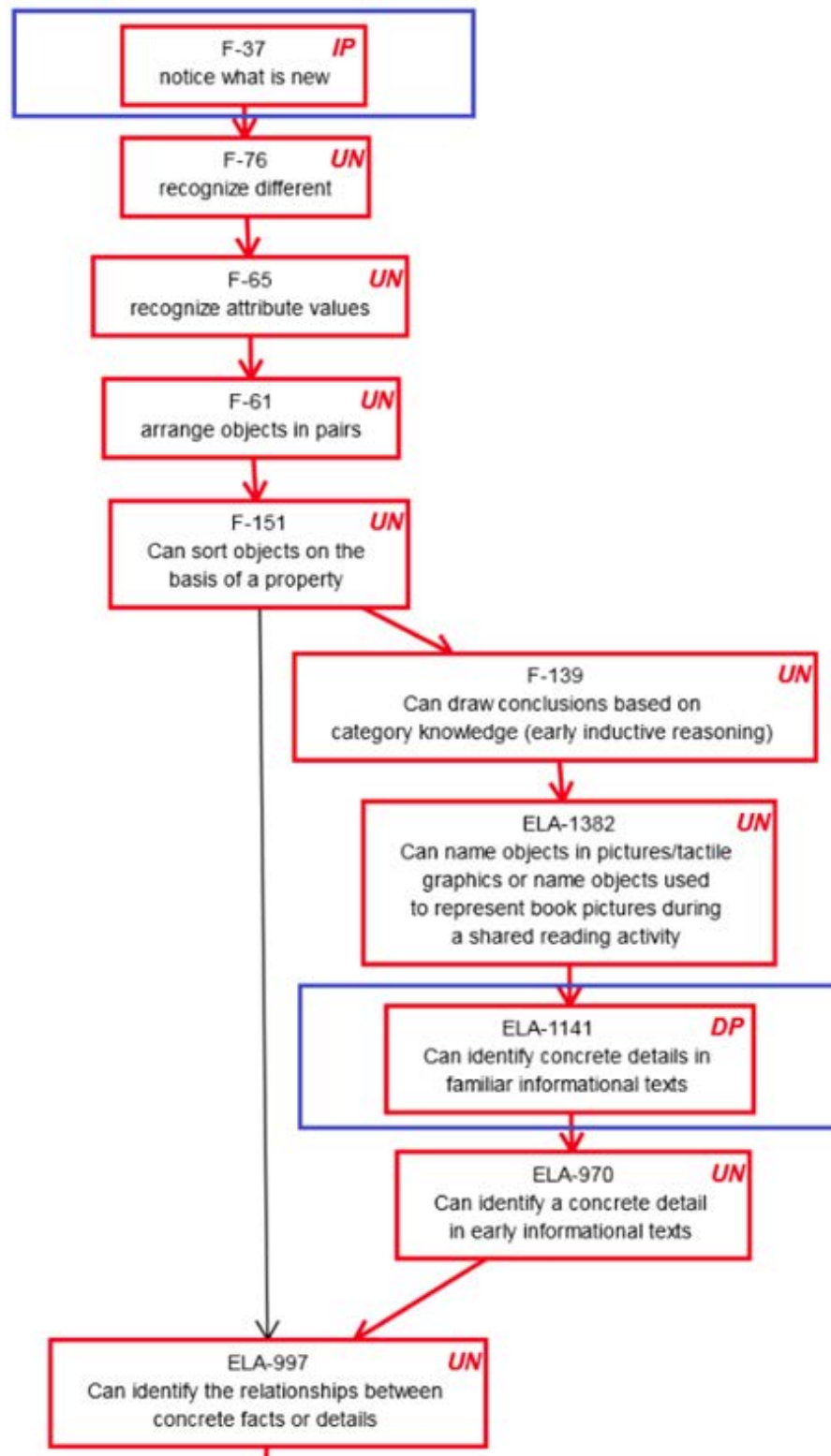
© 2018 The Dynamic Learning Maps Essential Elements, linkage levels, and nodes are copyrighted by the University of Kansas Center for Research. Linkage levels and nodes are available for use by educators in DLM states but may not be used by commercial entities without written permission. Linkage level information and nodes may not be altered by anyone without express written permission from the University of Kansas Center for Research.

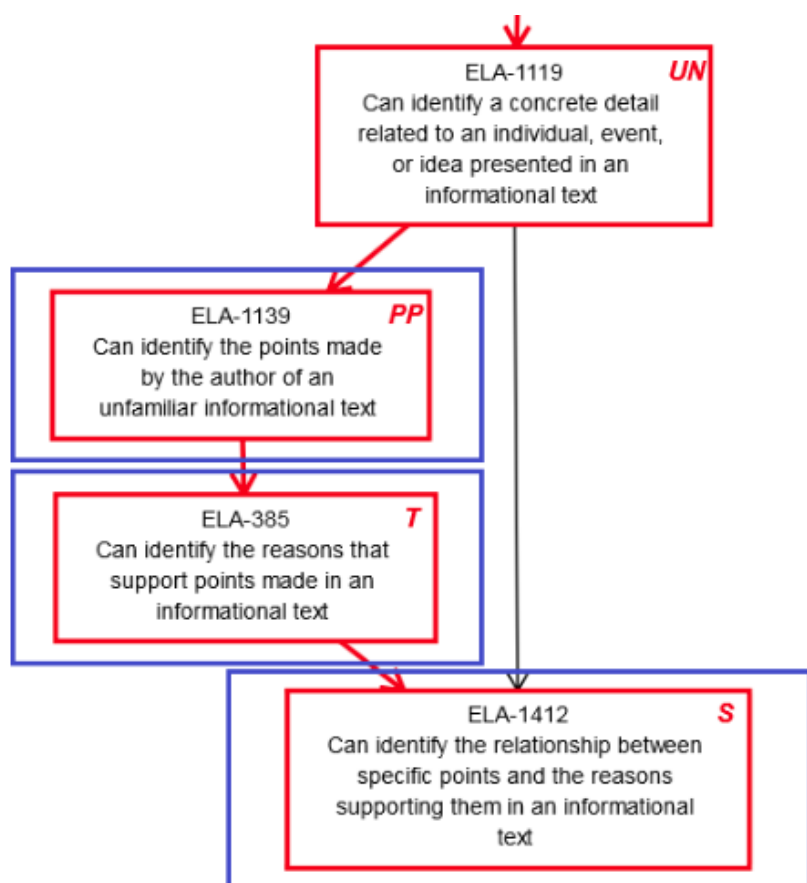
A diagram showing the relationship of nodes in the mini-map appears below.

Key to map codes in upper right corner of node boxes:

IP	Initial Precursor	SP	Supporting
DP	Distal Precursor	S	Successor
PP	Proximal Precursor	UN	Untested
T	Target		

ELA.EE.RI.4.8 - Identify one or more reasons supporting a specific point in an informational text.





ESSENTIAL ELEMENT, LINKAGE LEVELS, AND MINI-MAP

ELA: GRADE 4

ELA.EE.L.4.5.c

Grade-Level Standard	DLM Essential Element	Linkage Levels
ELA.L.4.5.c Demonstrate understanding of words by relating them to their opposites (antonyms) and to words with similar but not identical meanings (synonyms)	ELA.EE.L.4.5.c Demonstrate understanding of opposites	Initial Precursor: <ul style="list-style-type: none"> Can recognize when he or she encounters familiar people, objects, places, and events Distal Precursor: <ul style="list-style-type: none"> Can determine some of the relevant words for describing people, places, things, or events familiar to the student Proximal Precursor: <ul style="list-style-type: none"> Can provide real-life examples of words connected to a use (describe people who are friendly) Target: <ul style="list-style-type: none"> Can demonstrate an understanding of words with opposite meaning (e.g. cold, hot, up, down) Successor: <ul style="list-style-type: none"> Can demonstrate an understanding that when two words have the same meaning, they are synonyms (the student may or may not explicitly use the term synonym, but this term should be used with the student)

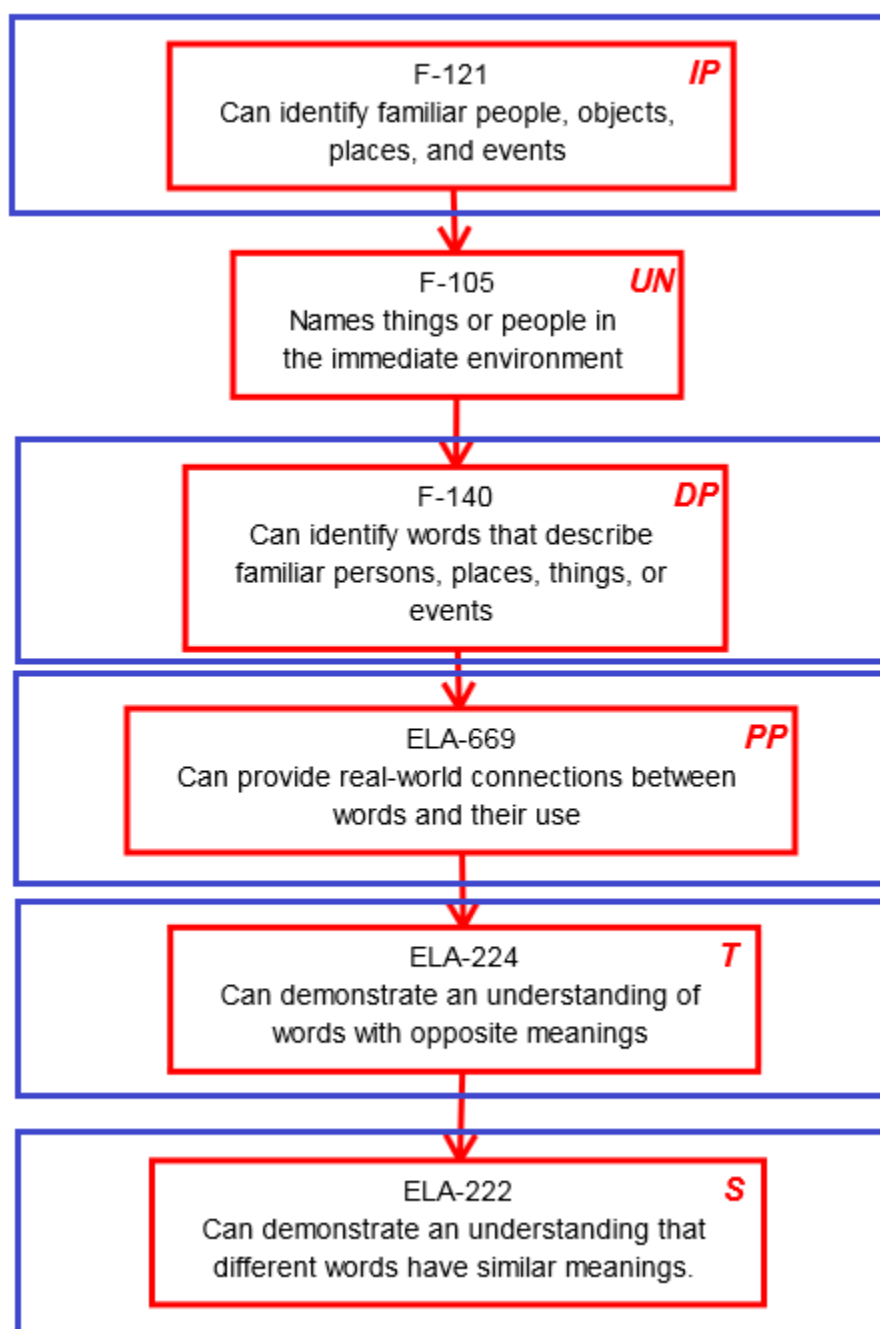
© 2018 The Dynamic Learning Maps Essential Elements, linkage levels, and nodes are copyrighted by the University of Kansas Center for Research. Linkage levels and nodes are available for use by educators in DLM states but may not be used by commercial entities without written permission. Linkage level information and nodes may not be altered by anyone without express written permission from the University of Kansas Center for Research.

A diagram showing the relationship of nodes in the mini-map appears below.

Key to map codes in upper right corner of node boxes:

IP	Initial Precursor	SP	Supporting
DP	Distal Precursor	S	Successor
PP	Proximal Precursor	UN	Untested
T	Target		

ELA.EE.L.4.5.c - Demonstrate understanding of opposites.



ESSENTIAL ELEMENT, LINKAGE LEVELS, AND MINI-MAP

ELA: GRADE 4

ELA.EE.RI.4.9

Grade-Level Standard	DLM Essential Element	Linkage Levels
ELA.RI.4.9 Integrate information from two texts on the same topic in order to write or speak about the subject knowledgeably	ELA.EE.RI.4.9 Compare details presented in two texts on the same topic	Initial Precursor: <ul style="list-style-type: none"> Can indicate an object when it is referred to by name Distal Precursor: <ul style="list-style-type: none"> Using their categorical knowledge, can make generalizations about the category to novel instances of that category Proximal Precursor: <ul style="list-style-type: none"> Can determine when two different informational texts on the same topic make a similar point or statement Target: <ul style="list-style-type: none"> Can compare informational texts on the same topic based on the specific details used to discuss the topic Successor: <ul style="list-style-type: none"> Can compare and contrast informational texts on the same topic based on the specific details used to discuss the topic

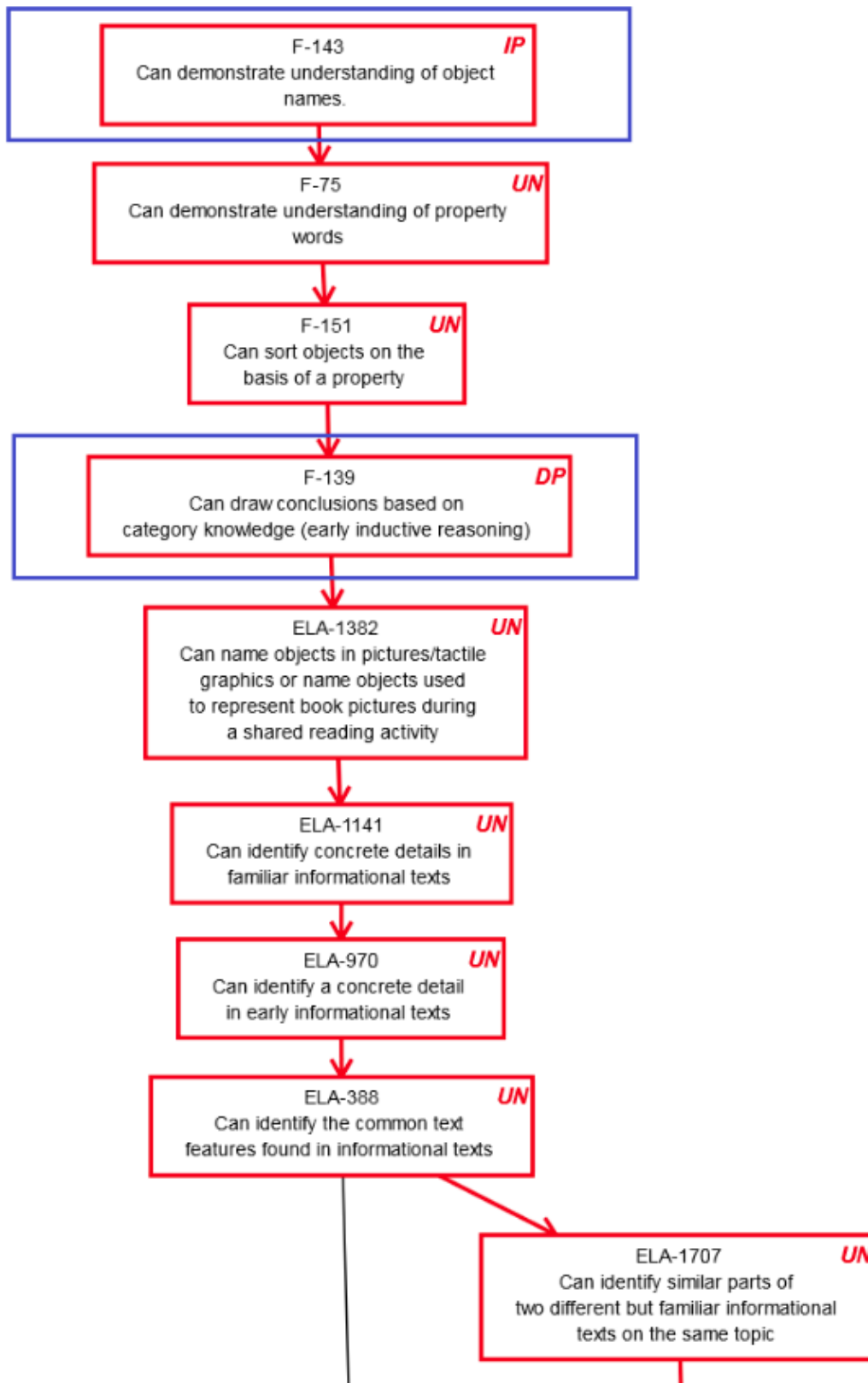
© 2018 The Dynamic Learning Maps Essential Elements, linkage levels, and nodes are copyrighted by the University of Kansas Center for Research. Linkage levels and nodes are available for use by educators in DLM states but may not be used by commercial entities without written permission. Linkage level information and nodes may not be altered by anyone without express written permission from the University of Kansas Center for Research.

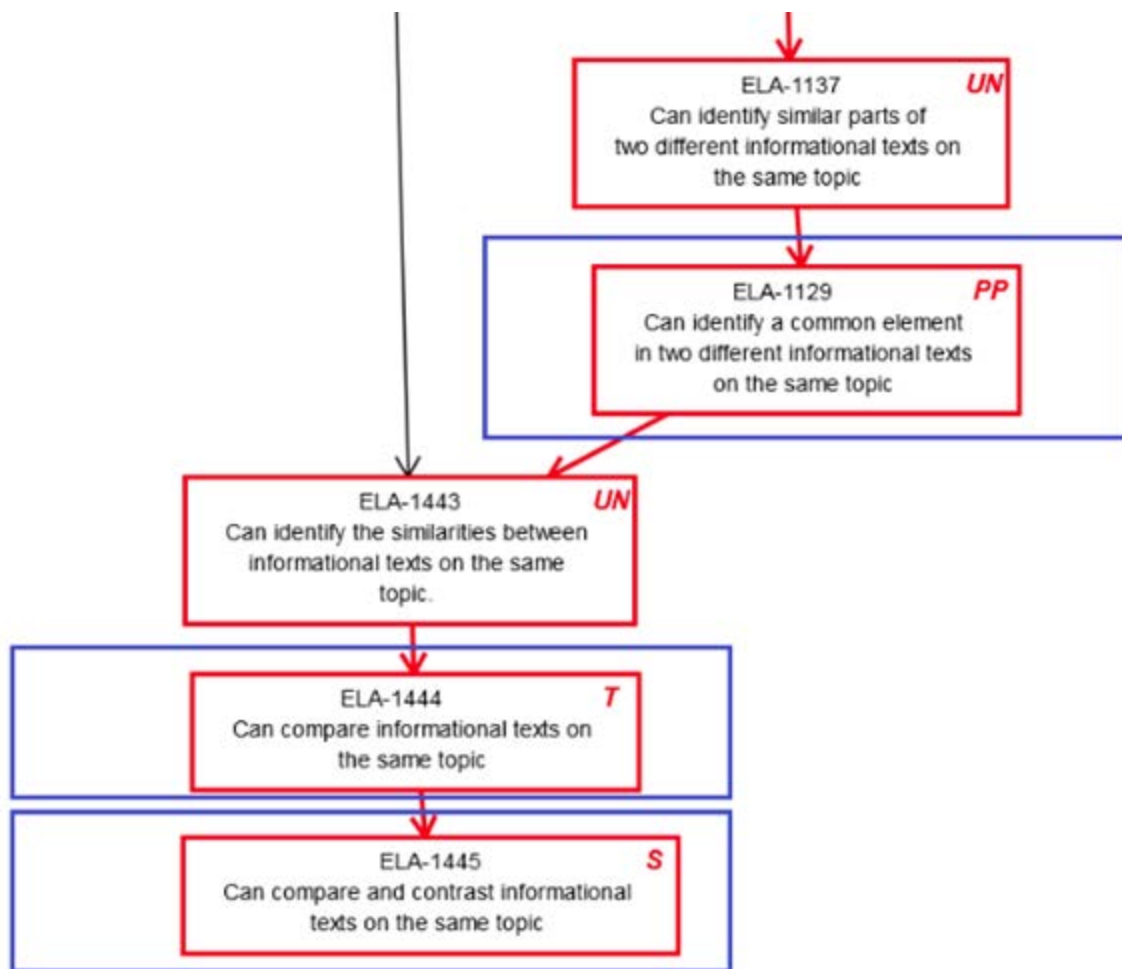
A diagram showing the relationship of nodes in the mini-map appears below.

Key to map codes in upper right corner of node boxes:

IP	Initial Precursor	SP	Supporting
DP	Distal Precursor	S	Successor
PP	Proximal Precursor	UN	Untested
T	Target		

ELA.EE.RI.4.9 - Compare details presented in two texts on the same topic.





ESSENTIAL ELEMENT, LINKAGE LEVELS, AND MINI-MAP

ELA: GRADE 4

ELA.EE.L.4.2.A

Grade-Level Standard	DLM Essential Element	Linkage Levels
ELA.L.4.2.a Use correct capitalization	ELA.EE.L.4.2.a Capitalize the first word in a sentence	EMERGENT WRITING (EW.4): <ul style="list-style-type: none"> • Initial Precursor: Student understands that we use letters to write words. We don't use numbers, punctuation, or other symbols, and we don't draw pictures to represent the referent • Distal Precursor: Can recognize when a letter is uppercase and when it is lowercase
		CONVENTIONAL WRITING (CW.4): <ul style="list-style-type: none"> • Proximal Precursor: Can indicate a knowledge that when a word is capitalized, the first letter in the word is in upper case • Target: Capitalizes the first letter of sentences • Successor: Capitalizes the correct words when writing a title

© 2018 The Dynamic Learning Maps Essential Elements, linkage levels, and nodes are copyrighted by the University of Kansas Center for Research. Linkage levels and nodes are available for use by educators in DLM states but may not be used by commercial entities without written permission. Linkage level information and nodes may not be altered by anyone without express written permission from the University of Kansas Center for Research.

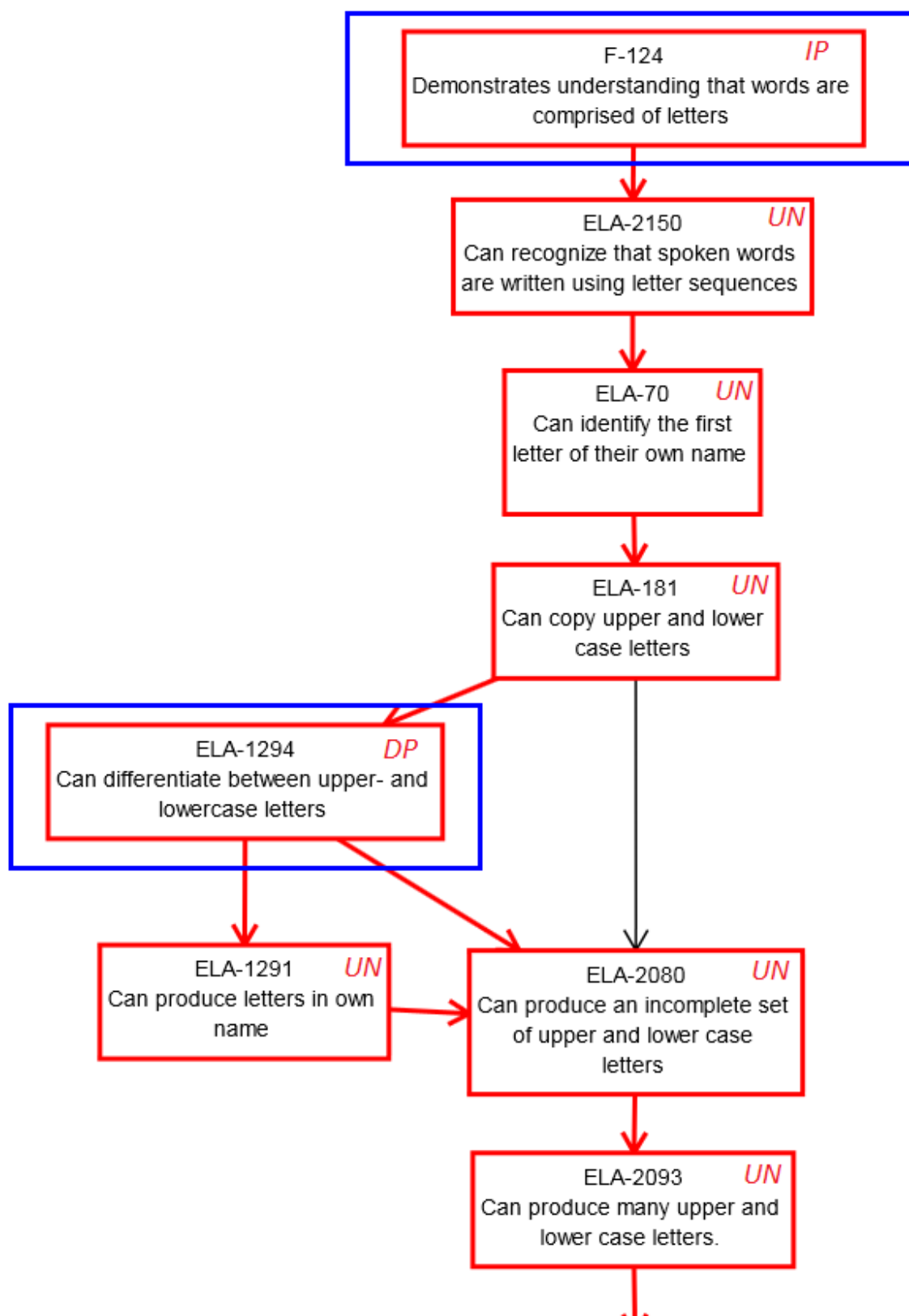
This EE is tested in an ELA writing testlet. Writing testlets are assessed at two levels: Emergent Writing and Conventional Writing. The initial and distal precursor nodes are assessed in the emergent writing testlet in Grade 4 with two other Essential Elements: EE.L.4.2.d and EE.W.4.2.b. The proximal precursor, target and successor nodes are assessed in the conventional writing testlet in Grade 4 with two other Essential Elements: EE.L.4.2.d and EE.W.4.2.b.

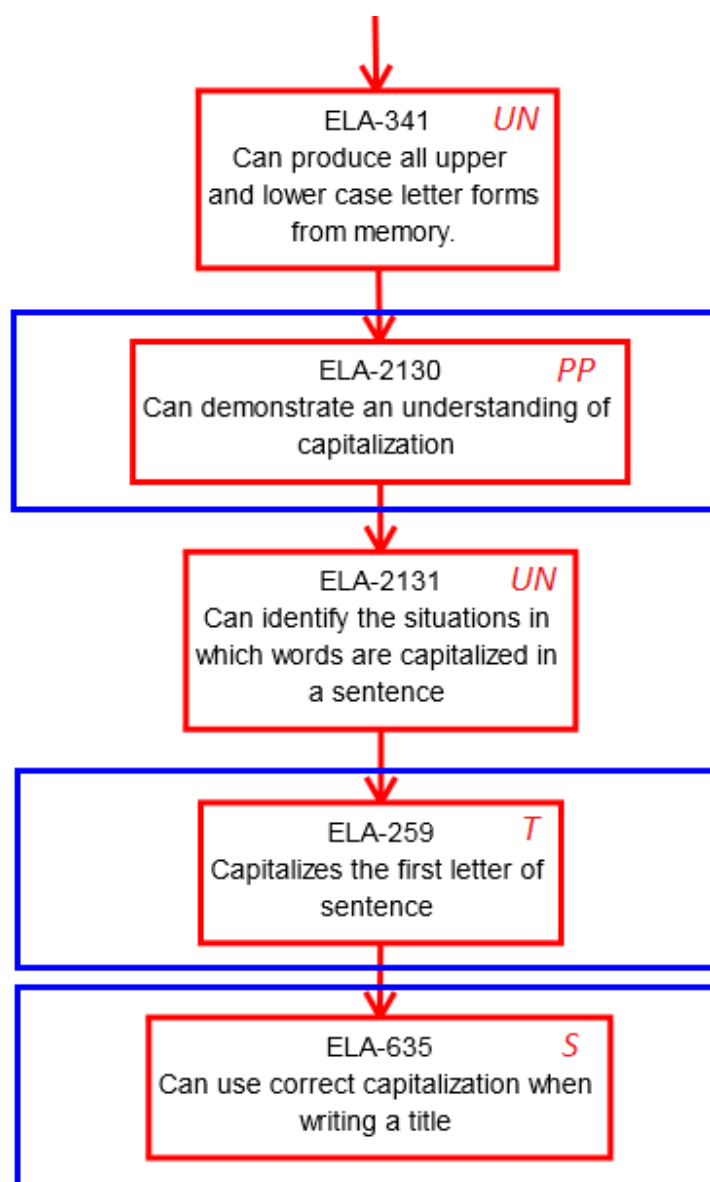
A diagram showing the relationship of nodes in the mini-map appears below.

Key to map codes in upper right corner of node boxes:

IP	Initial Precursor	SP	Supporting
DP	Distal Precursor	S	Successor
PP	Proximal Precursor	UN	Untested
T	Target		

ELA.EE.L.4.2.a - Capitalize the first word in a sentence.





ESSENTIAL ELEMENT, LINKAGE LEVELS, AND MINI-MAP

ELA: GRADE 4

ELA.EE.L.4.2.D

Grade-Level Standard	DLM Essential Element	Linkage Levels
ELA.L.4.2.d Spell grade-appropriate words correctly, consulting references as needed	ELA.EE.L.4.2.d Spell words phonetically, drawing on knowledge of letter-sound relationships, and/or common spelling patterns	EMERGENT WRITING (EW.4): <ul style="list-style-type: none"> • Initial Precursor: Student understands that we use letters to write words. We don't use numbers, punctuation, or other symbols, and we don't draw pictures to represent the referent • Distal Precursor: Can recognize the sound of the letter of their first name in words they hear and see, and can correctly represent this letter when spelling words that start with the same letter
		CONVENTIONAL WRITING (CW.4): <ul style="list-style-type: none"> • Proximal Precursor: Can produce a string of letters (student attempts to write words) by combining random letters • Target: Can use letter-sound knowledge to spell words phonetically by including letters that represent sounds from the word • Successor: Can spell words with inflectional endings (e.g., walked, eats, sleeping)

© 2018 The Dynamic Learning Maps Essential Elements, linkage levels, and nodes are copyrighted by the University of Kansas Center for Research. Linkage levels and nodes are available for use by educators in DLM states but may not be used by commercial entities without written permission. Linkage level information and nodes may not be altered by anyone without express written permission from the University of Kansas Center for Research.

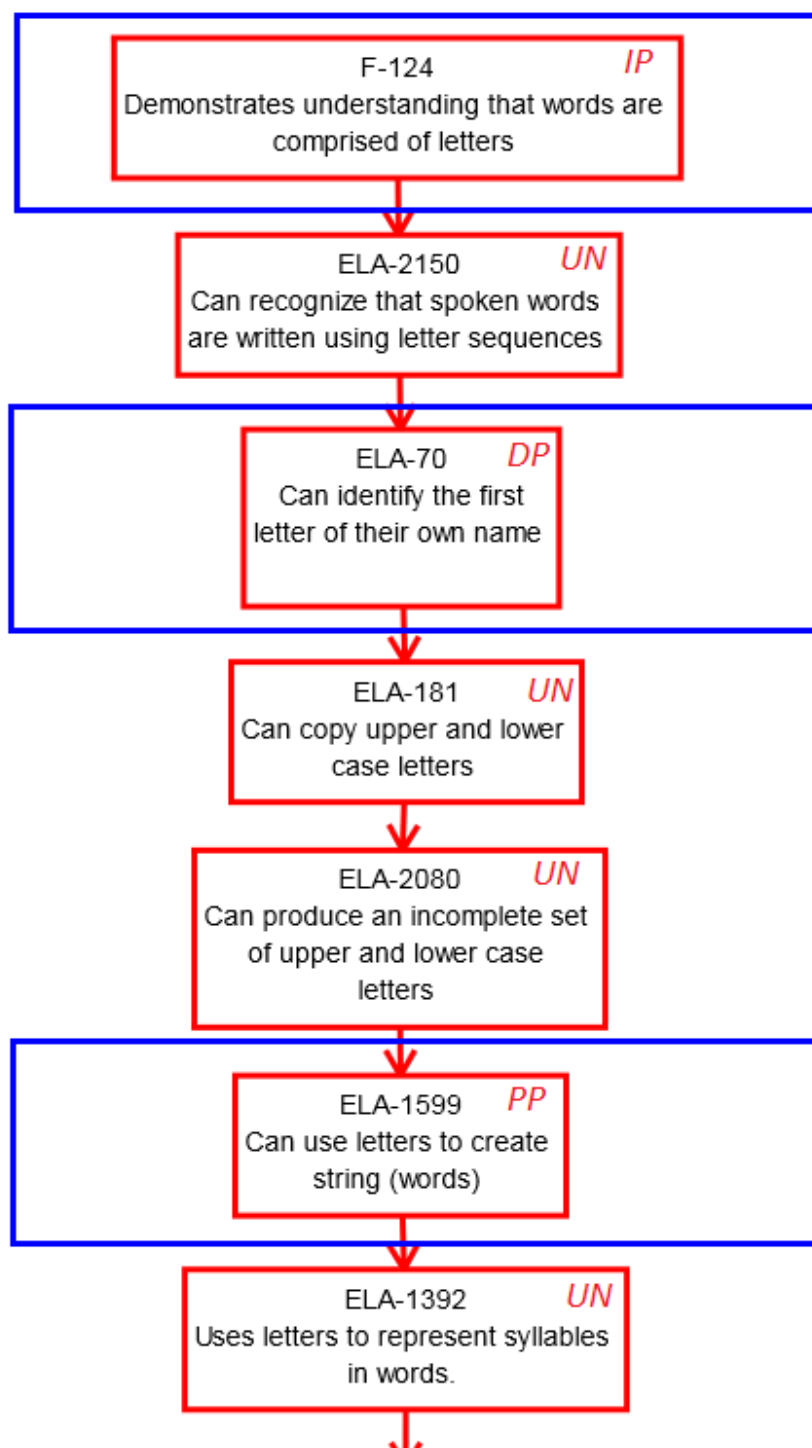
This EE is tested in an ELA writing testlet. Writing testlets are assessed at two levels: Emergent Writing and Conventional Writing. The initial and distal precursor nodes are assessed in the emergent writing testlet in Grade 4 with two other Essential Elements: EE.L.4.2.a and EE.W.4.2.b. The proximal precursor, target and successor nodes are assessed in the conventional writing testlet in Grade 4 with two other Essential Elements: EE.L.4.2.a and EE.W.4.2.b.

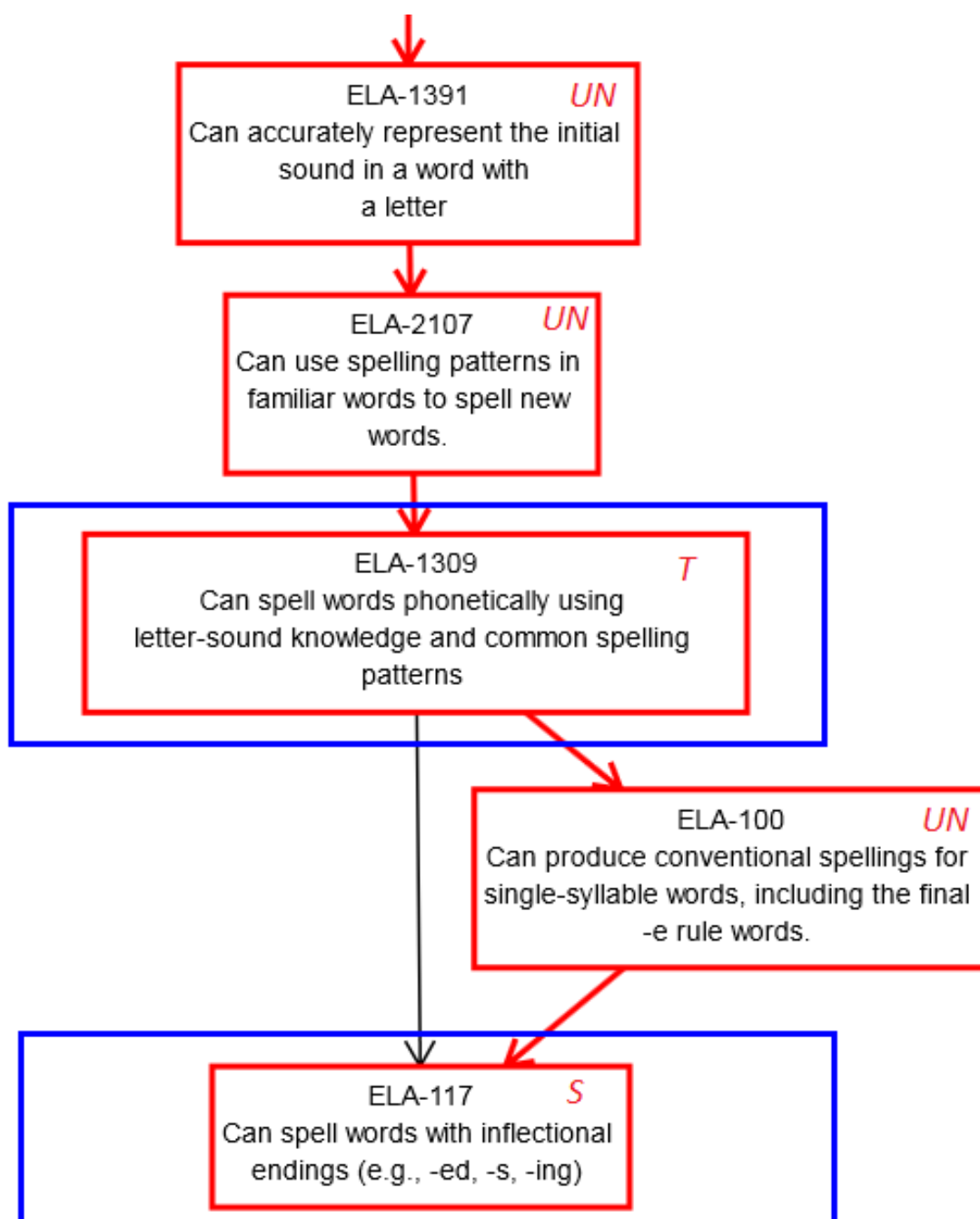
A diagram showing the relationship of nodes in the mini-map appears below.

Key to map codes in upper right corner of node boxes:

IP	Initial Precursor	SP	Supporting
DP	Distal Precursor	S	Successor
PP	Proximal Precursor	UN	Untested
T	Target		

ELA.EE.L.4.2.d - Spell words phonetically, drawing on knowledge of letter-sound relationships, and/or common spelling patterns.





ESSENTIAL ELEMENT, LINKAGE LEVELS, AND MINI-MAP

ELA: GRADE 4

ELA.EE.W.4.2.B

Grade-Level Standard	DLM Essential Element	Linkage Levels
ELA.W.4.2.b Develop the topic with facts, definitions, concrete details, quotations, or other information and examples related to the topic	ELA.EE.W.4.2.b List words, facts, or details related to the topic	EMERGENT WRITING (EW.4): <ul style="list-style-type: none"> • Initial Precursor: Can indicate an object when it is referred to by name • Distal Precursor: Can recognize when he or she encounters familiar people, objects, places, and events
		CONVENTIONAL WRITING (CW.4): <ul style="list-style-type: none"> • Proximal Precursor: Can determine some of the relevant words for describing people, places, things, or events familiar to the student • Target: Can determine the words, facts, details, or other information that relate to a specific topic when preparing to write • Successor: Student is already able to identify facts and details related to topic from a set of choices. Now they are able to provide written facts, details and/or information about a topic

© 2018 The Dynamic Learning Maps Essential Elements, linkage levels, and nodes are copyrighted by the University of Kansas Center for Research. Linkage levels and nodes are available for use by educators in DLM states but may not be used by commercial entities without written permission. Linkage level information and nodes may not be altered by anyone without express written permission from the University of Kansas Center for Research.

This EE is tested in an ELA writing testlet. Writing testlets are assessed at two levels: Emergent Writing and Conventional Writing. The initial and distal precursor nodes are assessed in the emergent writing testlet in Grade 4 with two other Essential Elements: EE.L.4.2.a and EE.L.4.2.d. The proximal precursor, target and successor nodes are assessed in the conventional writing testlet in Grade 4 with two other Essential Elements: EE.L.4.2.a and EE.L.4.2.d.

A diagram showing the relationship of nodes in the mini-map appears below.

Key to map codes in upper right corner of node boxes:

IP	Initial Precursor	SP	Supporting
DP	Distal Precursor	S	Successor
PP	Proximal Precursor	UN	Untested
T	Target		

ELA.EE.W.4.2.b - List words, facts, or details related to the topic.

