

ESSENTIAL ELEMENT, LINKAGE LEVELS, AND MINI-MAP

ELA: GRADE 6

ELA.EE.RI.6.5

Grade-Level Standard	DLM Essential Element	Linkage Levels
ELA.RI.6.5 Analyze how a particular sentence, paragraph, chapter, or section fits into the overall structure of a text and contributes to the development of the ideas	ELA.EE.RI.6.5 Determine how the title fits the structure of the text	Initial Precursor: <ul style="list-style-type: none"> Demonstrates receptive understanding of the action words that accompany familiar games or routines Distal Precursor: <ul style="list-style-type: none"> Can identify the concrete details, such as individuals, events, or ideas in familiar informational texts Proximal Precursor: <ul style="list-style-type: none"> Can determine if an informational text is providing information about events, giving directions, or providing information on a topic Target: <ul style="list-style-type: none"> Can understand how the title indicates information about or fits the structure of an informational text Successor: <ul style="list-style-type: none"> Taking the structure of the text into account, the student can identify how a fact, step, or event fits into the text

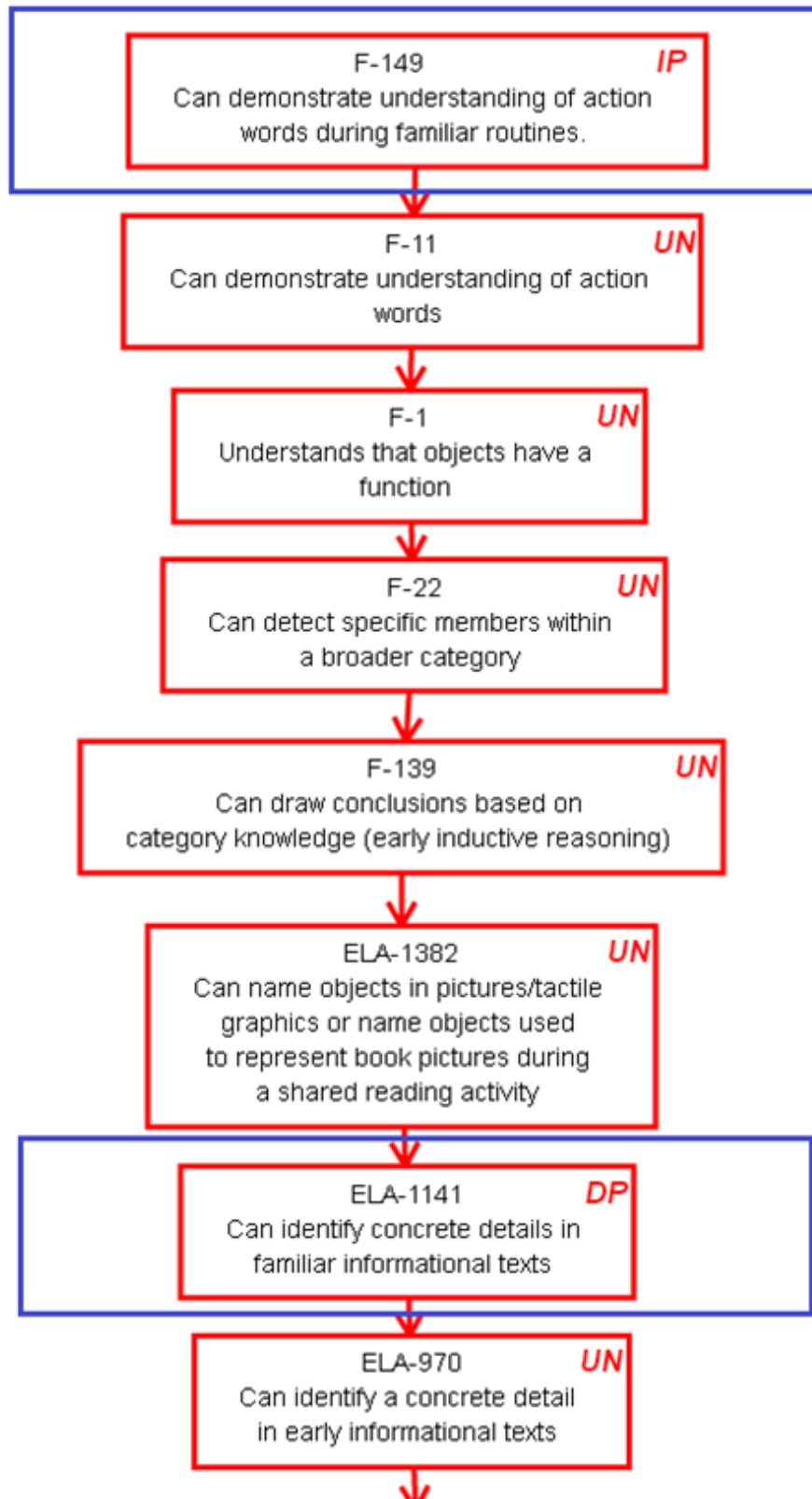
© 2018 The Dynamic Learning Maps Essential Elements, linkage levels, and nodes are copyrighted by the University of Kansas Center for Research. Linkage levels and nodes are available for use by educators in DLM states but may not be used by commercial entities without written permission. Linkage level information and nodes may not be altered by anyone without express written permission from the University of Kansas Center for Research.

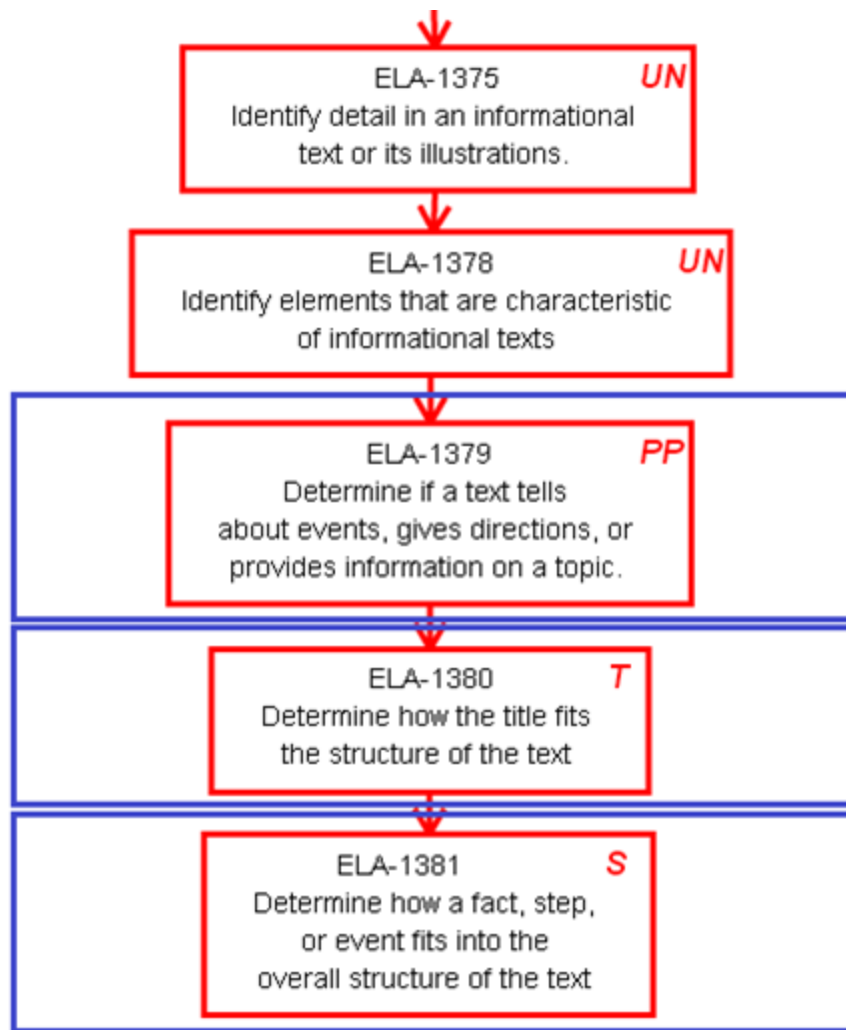
A diagram showing the relationship of nodes in the mini-map appears below.

Key to map codes in upper right corner of node boxes:

IP	Initial Precursor	SP	Supporting
DP	Distal Precursor	S	Successor
PP	Proximal Precursor	UN	Untested
T	Target		

ELA.EE.RI.6.5 - Determine how the title fits the structure of the text.





ESSENTIAL ELEMENT, LINKAGE LEVELS, AND MINI-MAP

ELA: GRADE 6

ELA.EE.RL.6.1

Grade-Level Standard	DLM Essential Element	Linkage Levels
ELA.EE.RL.6.1 Cite textual evidence to support analysis of what the text says explicitly as well as inferences drawn from the text	ELA.EE.RL.6.1 Determine what a text says explicitly as well as what simple inferences must be drawn	Initial Precursor: <ul style="list-style-type: none"> Can differentiate between text and pictures. Can pair an object with a picture, tactile graphic, or other symbolic representation of the object Distal Precursor: <ul style="list-style-type: none"> Can identify the key elements in a story, including the main characters, setting, and the major events Proximal Precursor: <ul style="list-style-type: none"> Can identify the concrete details, such as characters, objects, setting, and major events that are specifically stated in a narrative text Target: <ul style="list-style-type: none"> Can analyze a narrative and differentiate between explicitly-stated information and implications in the text that require an inference Successor: <ul style="list-style-type: none"> Can analyze a narrative to identify where it expresses information explicitly and where inferences should be made to determine the implicit information underlying the explicit information

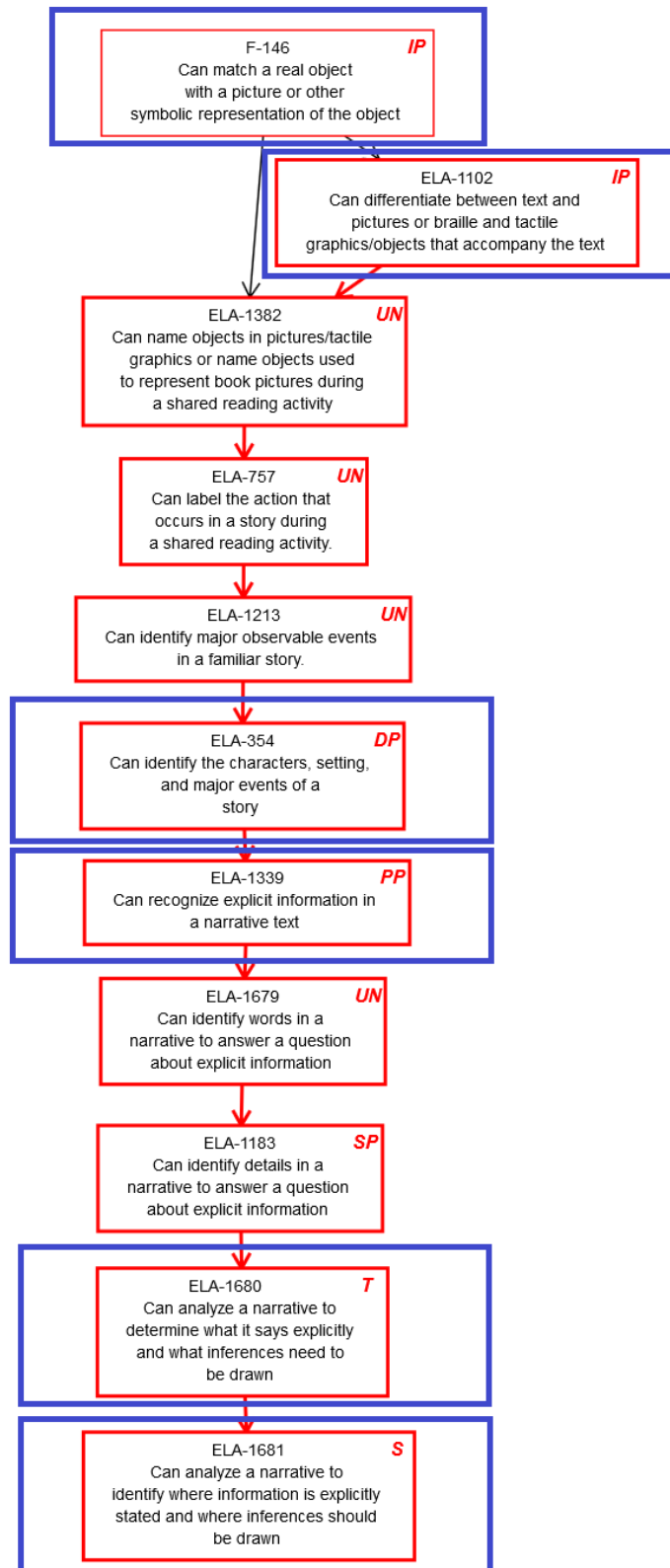
© 2018 The Dynamic Learning Maps Essential Elements, linkage levels, and nodes are copyrighted by the University of Kansas Center for Research. Linkage levels and nodes are available for use by educators in DLM states but may not be used by commercial entities without written permission. Linkage level information and nodes may not be altered by anyone without express written permission from the University of Kansas Center for Research.

A diagram showing the relationship of nodes in the mini-map appears below.

Key to map codes in upper right corner of node boxes:

IP	Initial Precursor	SP	Supporting
DP	Distal Precursor	S	Successor
PP	Proximal Precursor	UN	Untested
T	Target		

ELA.EE.RL.6.1 - Determine what a text says explicitly as well as what simple inferences must be drawn.



ESSENTIAL ELEMENT, LINKAGE LEVELS, AND MINI-MAP

ELA: GRADE 6

ELA.EE.RL.6.2

Grade-Level Standard	DLM Essential Element	Linkage Levels
ELA.RL.6.2 Determine a theme or central idea of a text and how it is conveyed through particular details; provide a summary of the text distinct from personal opinions or judgments	ELA.EE.RL.6.2 Identify details in a text that are related to the theme or central idea	Initial Precursor: <ul style="list-style-type: none"> Can pair an object with a picture, tactile graphic, or other symbolic representation of the object Distal Precursor: <ul style="list-style-type: none"> Can identify elements in a story (characters, other key details in the text) when asked Proximal Precursor: <ul style="list-style-type: none"> Can identify what the overall goal or main idea of a single episode is in a narrative by inferring from the characters, settings, and actions Target: <ul style="list-style-type: none"> Can determine the details that provide for the foundation of the theme in a narrative Successor: <ul style="list-style-type: none"> Can determine the events that provide for the foundation of the theme in a narrative

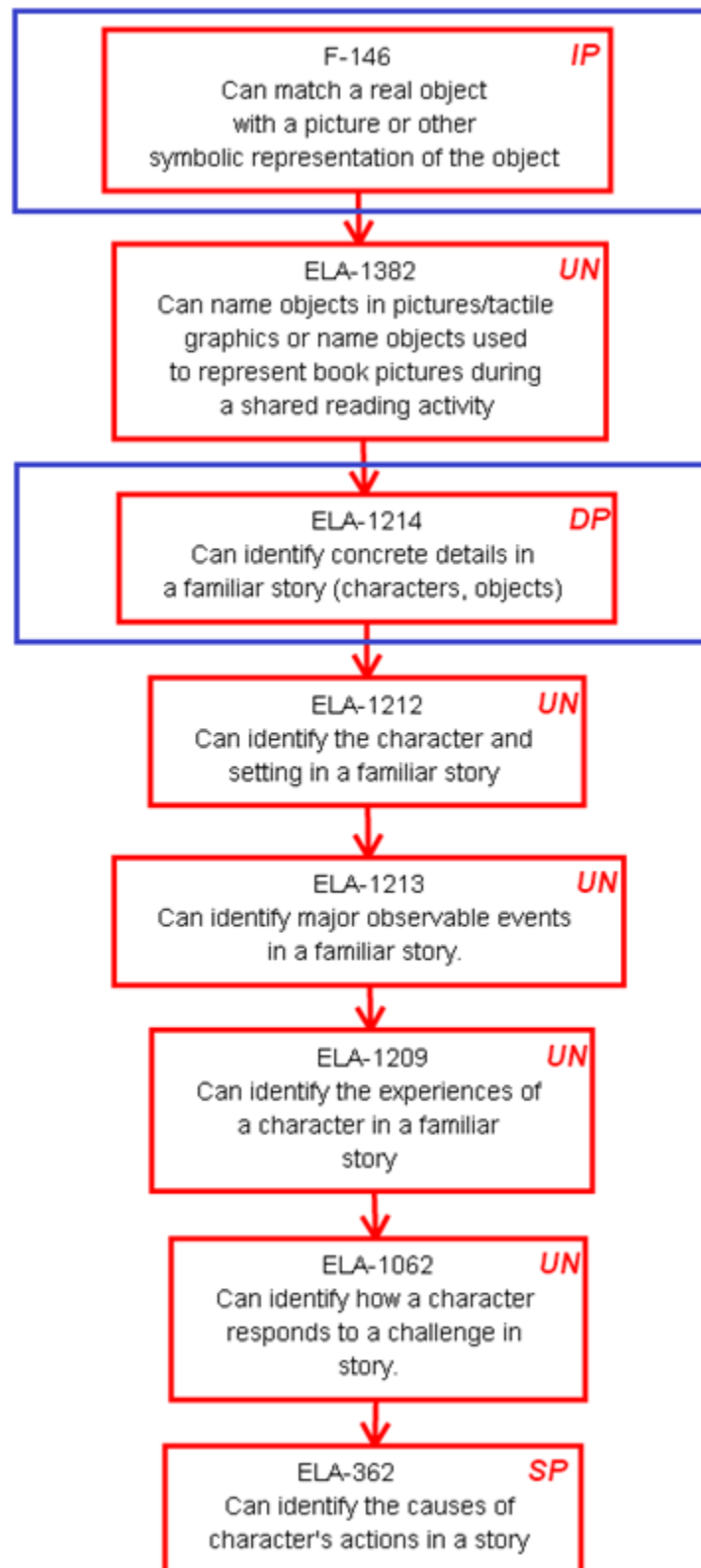
© 2018 The Dynamic Learning Maps Essential Elements, linkage levels, and nodes are copyrighted by the University of Kansas Center for Research. Linkage levels and nodes are available for use by educators in DLM states but may not be used by commercial entities without written permission. Linkage level information and nodes may not be altered by anyone without express written permission from the University of Kansas Center for Research.

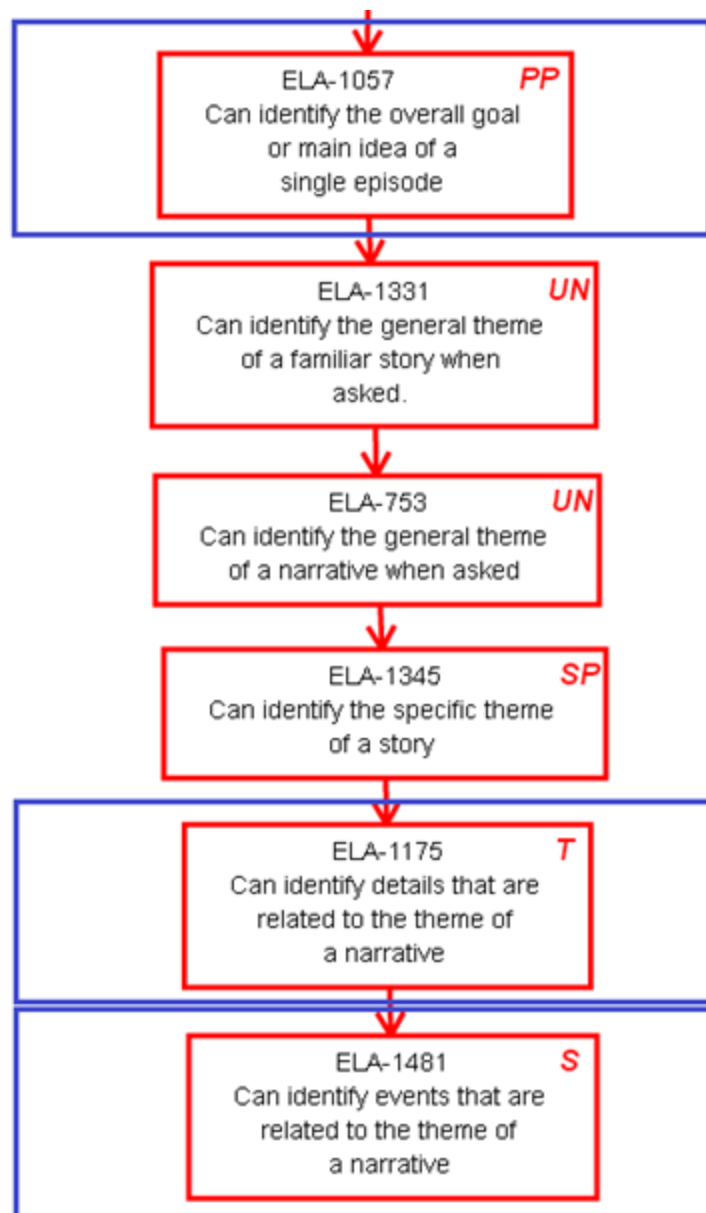
A diagram showing the relationship of nodes in the mini-map appears below.

Key to map codes in upper right corner of node boxes:

IP	Initial Precursor	SP	Supporting
DP	Distal Precursor	S	Successor
PP	Proximal Precursor	UN	Untested
T	Target		

ELA.EE.RL.6.2 - Identify details in a text that are related to the theme or central idea.





ESSENTIAL ELEMENT, LINKAGE LEVELS, AND MINI-MAP

ELA: GRADE 6

ELA.EE.RL.6.4

Grade-Level Standard	DLM Essential Element	Linkage Levels
ELA.RL.6.4 Determine the meaning of words and phrases as they are used in a text, including figurative and connotative meanings; analyze the impact of a specific word choice on meaning and tone	ELA.EE.RL.6.4 Determine how word choice changes the meaning in a text	Initial Precursor: <ul style="list-style-type: none"> Can understand adjectives in others' speech Distal Precursor: <ul style="list-style-type: none"> Can demonstrate an understanding of words with opposite meanings (e.g., cold, hot, up, down) Proximal Precursor: <ul style="list-style-type: none"> Can understanding that words might have a slightly different meaning or use depending on the specific context in which they are used Target: <ul style="list-style-type: none"> Can ascertain how the meaning of a narrative is influenced by the author's choice of words Successor: <ul style="list-style-type: none"> Can infer word meaning using semantic clues in the sentence or paragraph, including restatement, illustrations or examples, similes, metaphors, personification, summary, and cause/effect

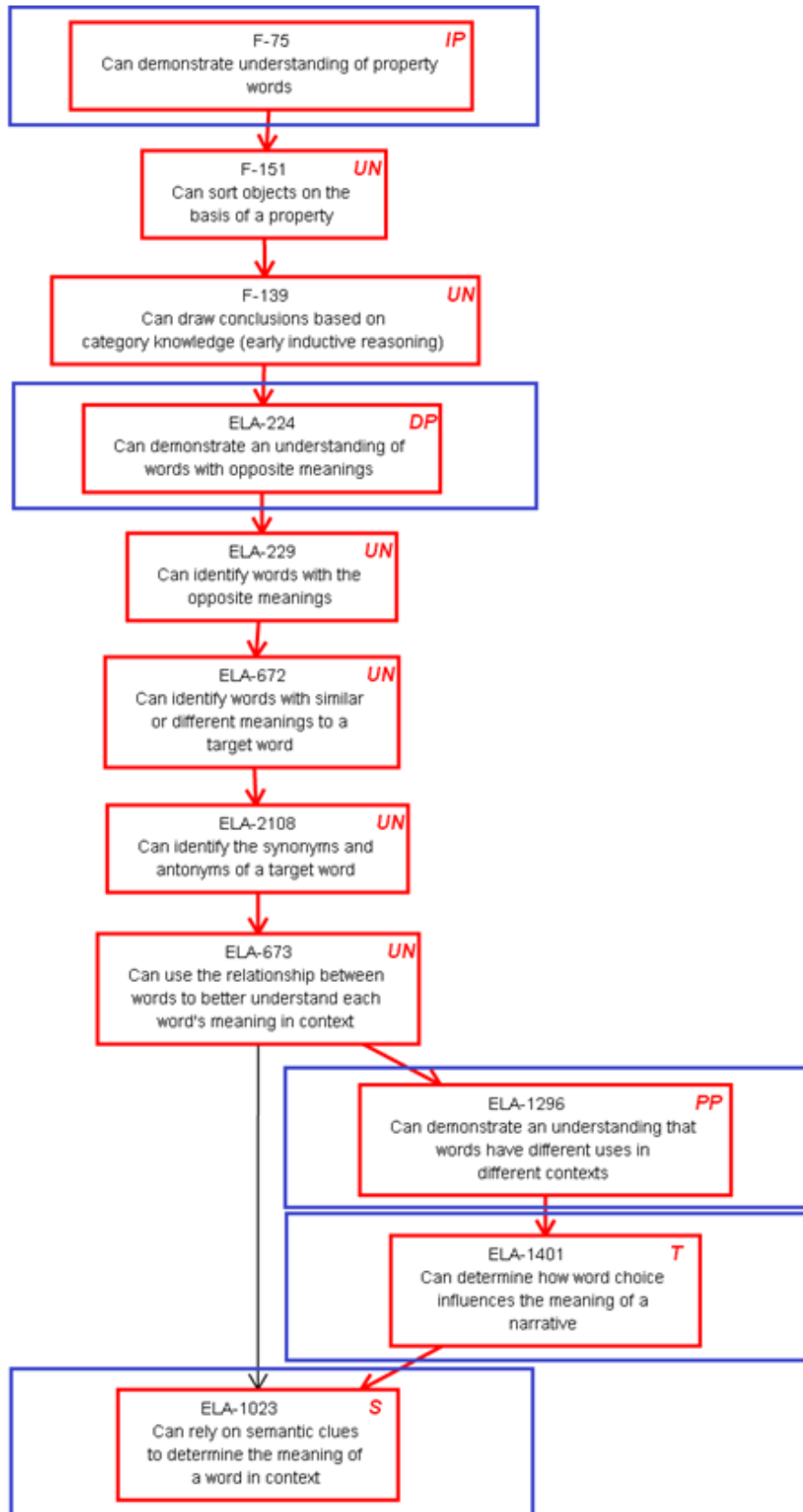
© 2018 The Dynamic Learning Maps Essential Elements, linkage levels, and nodes are copyrighted by the University of Kansas Center for Research. Linkage levels and nodes are available for use by educators in DLM states but may not be used by commercial entities without written permission. Linkage level information and nodes may not be altered by anyone without express written permission from the University of Kansas Center for Research.

A diagram showing the relationship of nodes in the mini-map appears below.

Key to map codes in upper right corner of node boxes:

IP	Initial Precursor	SP	Supporting
DP	Distal Precursor	S	Successor
PP	Proximal Precursor	UN	Untested
T	Target		

ELA.EE.RL.6.4 - Determine how word choice changes the meaning in a text.



ESSENTIAL ELEMENT, LINKAGE LEVELS, AND MINI-MAP

ELA: GRADE 6

ELA.EE.RL.6.6

Grade-Level Standard	DLM Essential Element	Linkage Levels
ELA.RL.6.6 Explain how an author develops the point of view of the narrator or speaker in a text	ELA.EE.RL.6.6 Identify words or phrases in the text that describe or show what the narrator or speaker is thinking or feeling	Initial Precursor: <ul style="list-style-type: none"> Can recognize when he or she encounters familiar people, objects, places, and events Distal Precursor: <ul style="list-style-type: none"> Can identify the feelings of specific characters in narratives Proximal Precursor: <ul style="list-style-type: none"> Can determine who the narrator is in a story he or she is reading Target: <ul style="list-style-type: none"> Can describe what the narrator or current speaker is thinking or feeling by identifying relevant words or phrases, such as "I ruminated on the missed opportunity at catching the thief on that fateful night at the mansion" Successor: <ul style="list-style-type: none"> Compares the points of views of two characters or narrators in a text

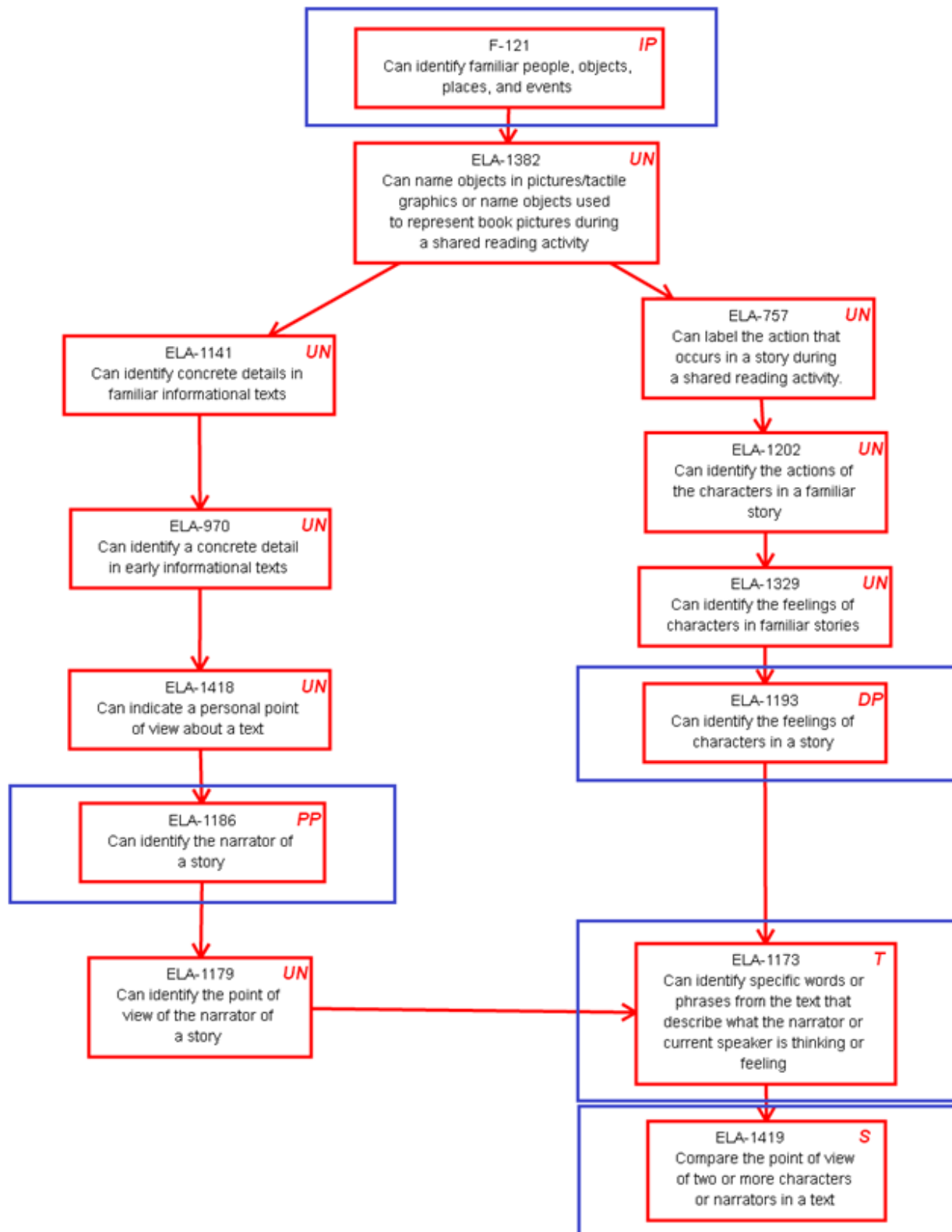
© 2018 The Dynamic Learning Maps Essential Elements, linkage levels, and nodes are copyrighted by the University of Kansas Center for Research. Linkage levels and nodes are available for use by educators in DLM states but may not be used by commercial entities without written permission. Linkage level information and nodes may not be altered by anyone without express written permission from the University of Kansas Center for Research.

A diagram showing the relationship of nodes in the mini-map appears below.

Key to map codes in upper right corner of node boxes:

IP	Initial Precursor	SP	Supporting
DP	Distal Precursor	S	Successor
PP	Proximal Precursor	UN	Untested
T	Target		

ELA.EE.RL.6.6 - Identify words or phrases in the text that describe or show what the narrator or speaker is thinking or feeling.



ESSENTIAL ELEMENT, LINKAGE LEVELS, AND MINI-MAP

ELA: GRADE 6

ELA.EE.RI.6.1

Grade-Level Standard	DLM Essential Element	Linkage Levels
ELA.RI.6.1 Cite textual evidence to support analysis of what the text says explicitly as well as inferences drawn from the text	ELA.EE.RI.6.1 Analyze a text to determine what it says explicitly as well as what inferences should be drawn	Initial Precursor: <ul style="list-style-type: none"> Can differentiate between text and pictures. Can pair an object with a picture, tactile graphic, or other symbolic representation of the object Distal Precursor: <ul style="list-style-type: none"> Can identify illustrations or tactile graphics/objects that reflect aspects of a familiar text, such as setting, characters, or action if it is a story or a person, place, thing, or idea if it is an informational text Proximal Precursor: <ul style="list-style-type: none"> Able to identify explicit details in an informational text Target: <ul style="list-style-type: none"> Can analyze an informational text and differentiate between explicitly-stated information and implications in the text that require an inference Successor: <ul style="list-style-type: none"> Student can determine both explicit information and can identify within the text where an inference is needed (they still don't necessarily have to be able to make the inference)

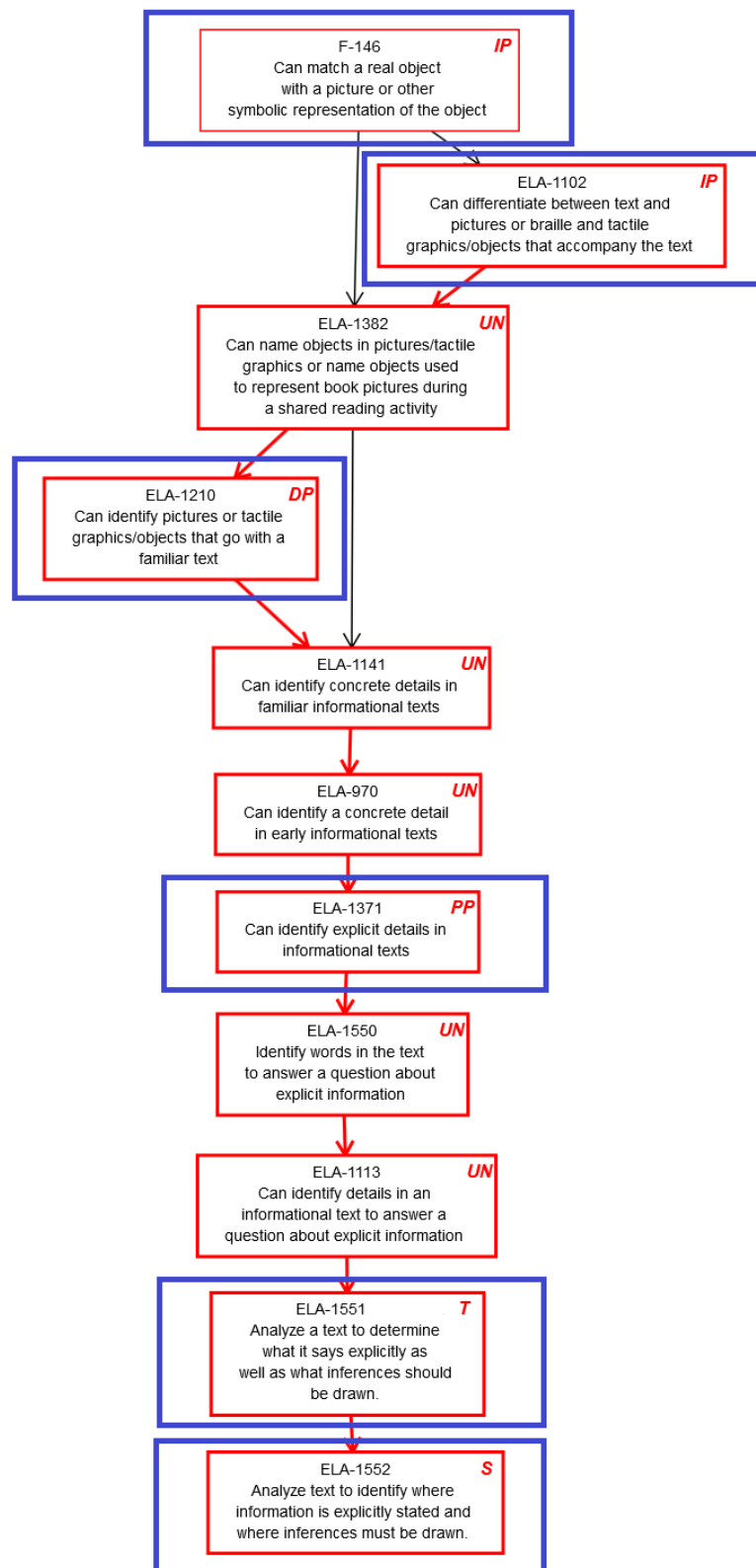
© 2018 The Dynamic Learning Maps Essential Elements, linkage levels, and nodes are copyrighted by the University of Kansas Center for Research. Linkage levels and nodes are available for use by educators in DLM states but may not be used by commercial entities without written permission. Linkage level information and nodes may not be altered by anyone without express written permission from the University of Kansas Center for Research.

A diagram showing the relationship of nodes in the mini-map appears below.

Key to map codes in upper right corner of node boxes:

IP	Initial Precursor	SP	Supporting
DP	Distal Precursor	S	Successor
PP	Proximal Precursor	UN	Untested
T	Target		

ELA.EE.RI.6.1 - Analyze a text to determine what it says explicitly as well as what inferences should be drawn.



ESSENTIAL ELEMENT, LINKAGE LEVELS, AND MINI-MAP

ELA: GRADE 6

ELA.EE.RI.6.2

Grade-Level Standard	DLM Essential Element	Linkage Levels
ELA.RI.6.2 Determine a central idea of a text and how it is conveyed through particular details; provide a summary of the text distinct from personal opinions or judgments	ELA.EE.RI.6.2 Determine the main idea of a passage and details or facts related to it	<p>Initial Precursor:</p> <ul style="list-style-type: none"> Can demonstrate a receptive understanding of the property words that describe the objects that accompany familiar games or routines <p>Distal Precursor:</p> <ul style="list-style-type: none"> Can identify the concrete details, such as individuals, events, or ideas in familiar informational texts <p>Proximal Precursor:</p> <ul style="list-style-type: none"> Can determine which details in a paragraph of an informational text are important <p>Target:</p> <ul style="list-style-type: none"> Can determine which details contained within a paragraph of an informational text provide an important contribution to the paragraph's main idea <p>Successor:</p> <ul style="list-style-type: none"> Can determine which key details in an informational text support the main idea of the whole text or a section of it

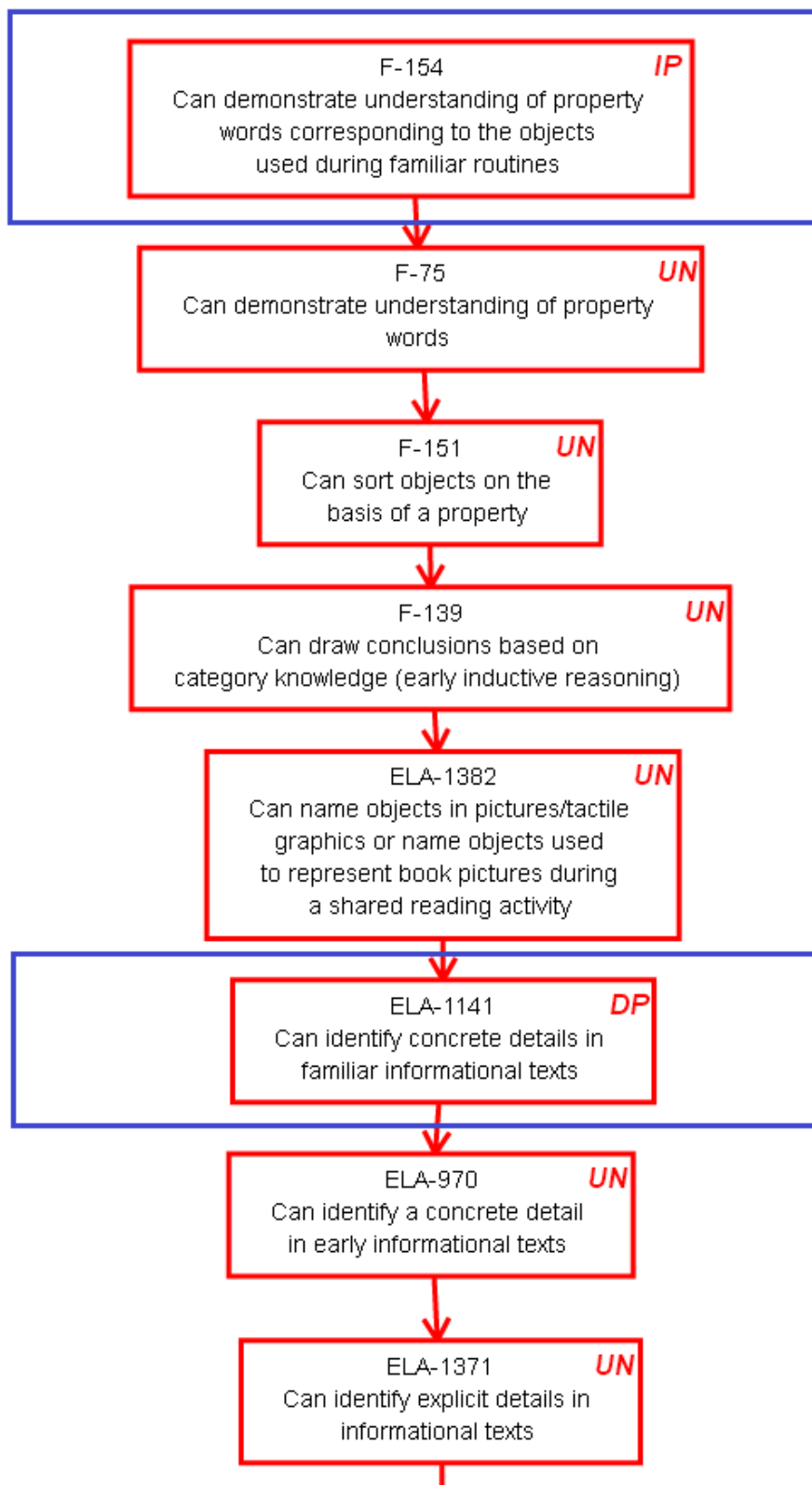
© 2018 The Dynamic Learning Maps Essential Elements, linkage levels, and nodes are copyrighted by the University of Kansas Center for Research. Linkage levels and nodes are available for use by educators in DLM states but may not be used by commercial entities without written permission. Linkage level information and nodes may not be altered by anyone without express written permission from the University of Kansas Center for Research.

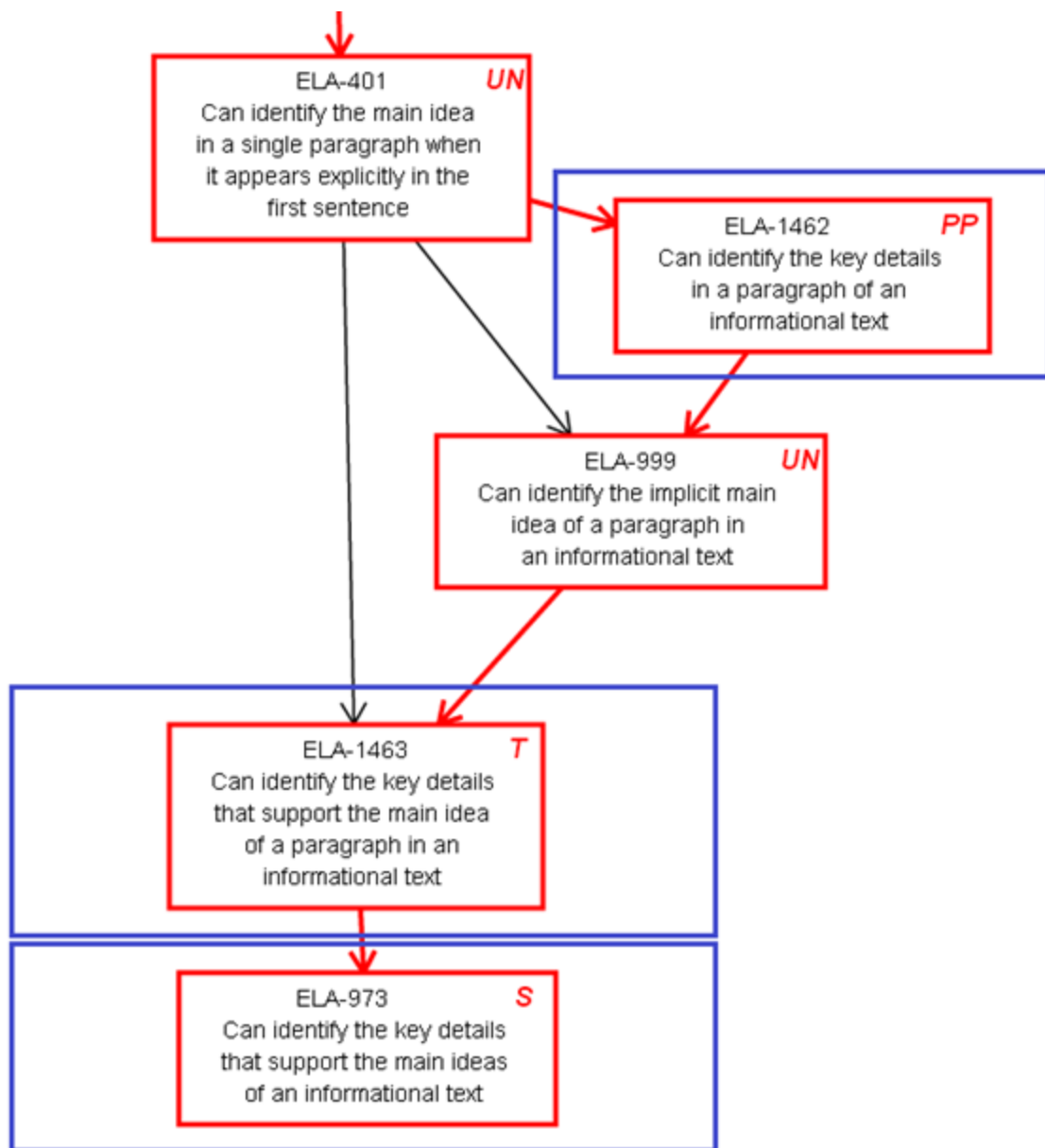
A diagram showing the relationship of nodes in the mini-map appears below.

Key to map codes in upper right corner of node boxes:

IP	Initial Precursor	SP	Supporting
DP	Distal Precursor	S	Successor
PP	Proximal Precursor	UN	Untested
T	Target		

ELA.EE.RI.6.2 - Determine the main idea of a passage and details or facts related to it.





ESSENTIAL ELEMENT, LINKAGE LEVELS, AND MINI-MAP

ELA: GRADE 6

ELA.EE.RI.6.4

Grade-Level Standard	DLM Essential Element	Linkage Levels
ELA.RI.6.4 Determine the meaning of words and phrases as they are used in a text, including figurative, connotative, and technical meanings	ELA.EE.RI.6.4 Determine how word choice changes the meaning of a text	<p>Initial Precursor:</p> <ul style="list-style-type: none"> Can demonstrate a receptive understanding of the property words that describe the objects that accompany familiar games or routines <p>Distal Precursor:</p> <ul style="list-style-type: none"> Can demonstrate an understanding of words with opposite meanings (e.g., cold, hot, up, down) <p>Proximal Precursor:</p> <ul style="list-style-type: none"> Can understand that words might have a slightly different meaning or use depending on the specific context in which they are used <p>Target:</p> <ul style="list-style-type: none"> Can ascertain how the meaning of an informational text is altered by the specific word choices the author makes <p>Successor:</p> <ul style="list-style-type: none"> Can determine how word choice in an informational text is used to persuade or inform

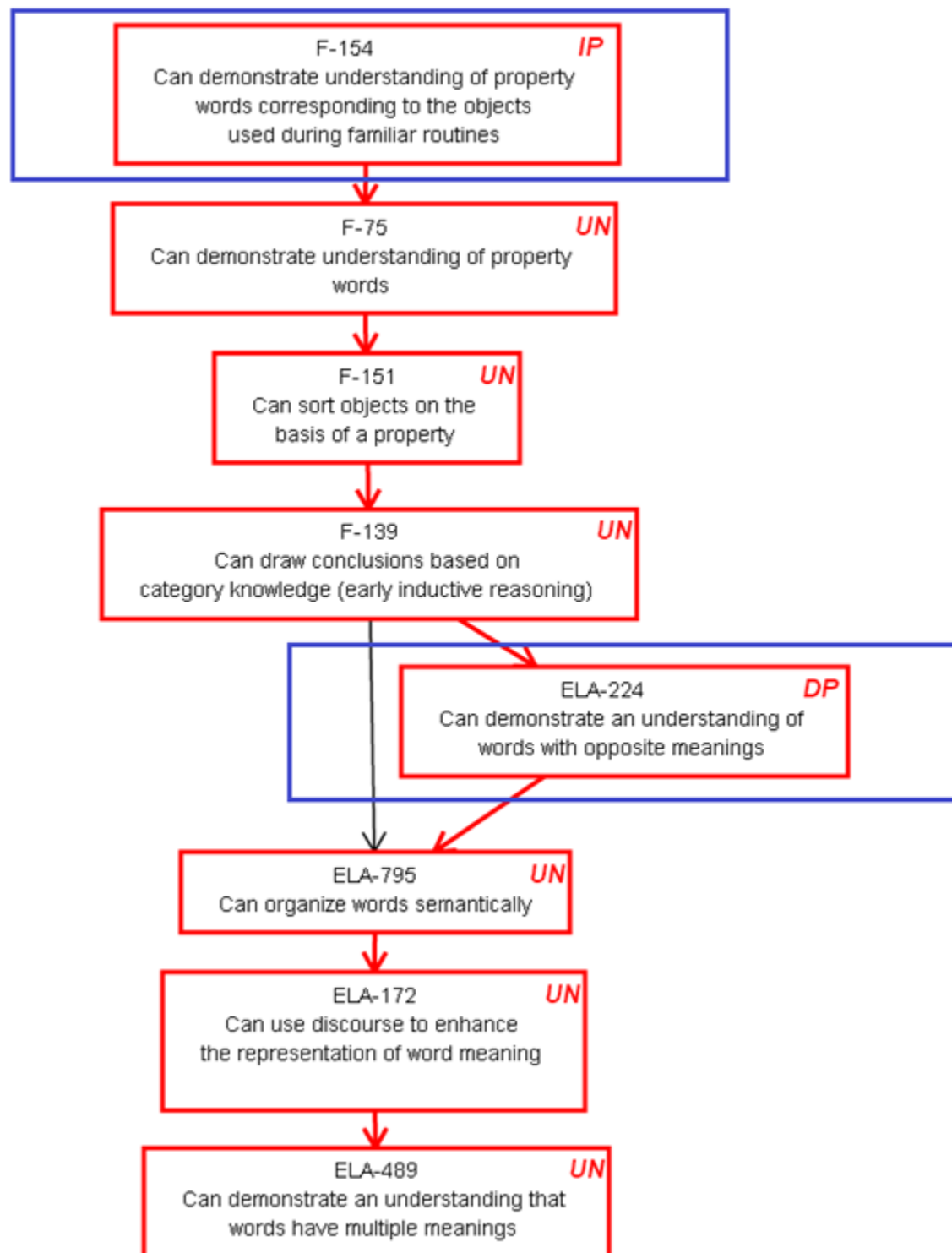
© 2018 The Dynamic Learning Maps Essential Elements, linkage levels, and nodes are copyrighted by the University of Kansas Center for Research. Linkage levels and nodes are available for use by educators in DLM states but may not be used by commercial entities without written permission. Linkage level information and nodes may not be altered by anyone without express written permission from the University of Kansas Center for Research.

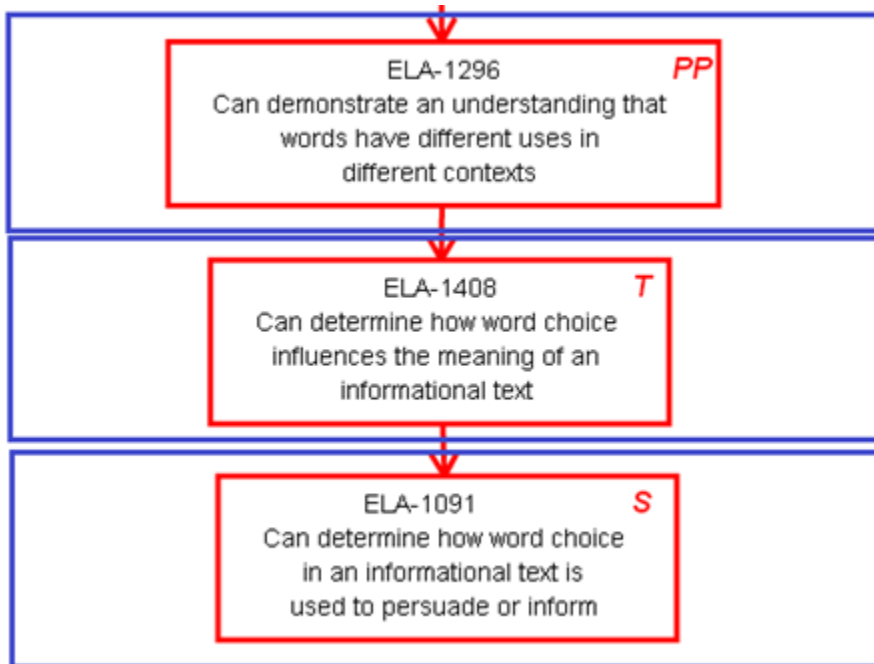
A diagram showing the relationship of nodes in the mini-map appears below.

Key to map codes in upper right corner of node boxes:

IP	Initial Precursor	SP	Supporting
DP	Distal Precursor	S	Successor
PP	Proximal Precursor	UN	Untested
T	Target		

ELA.EE.RI.6.4 - Determine how word choice changes the meaning of a text.





ESSENTIAL ELEMENT, LINKAGE LEVELS, AND MINI-MAP

ELA: GRADE 6

ELA.EE.RI.6.6

Grade-Level Standard	DLM Essential Element	Linkage Levels
ELA.RI.6.6 Determine an author's point of view or purpose in a text and explain how it is conveyed in the text	ELA.EE.RI.6.6 Identify words or phrases in the text that describe or show the author's point of view	Initial Precursor: <ul style="list-style-type: none"> Can demonstrate a receptive understanding of the property words that describe the objects that accompany familiar games or routines Distal Precursor: <ul style="list-style-type: none"> Can identify the concrete details, such as individuals, events, or ideas in familiar informational texts Proximal Precursor: <ul style="list-style-type: none"> Can identify the relationship between multiple concrete facts or details in a literature or informational text Target: <ul style="list-style-type: none"> Can identify words or phrases for determining the point of view of an informational text's author Successor: <ul style="list-style-type: none"> Can identify the author's point of view or purpose for writing an informational text on the topic at hand. The point of view of an author is his/her physical or mental relationship with a specific event or area of a general topic

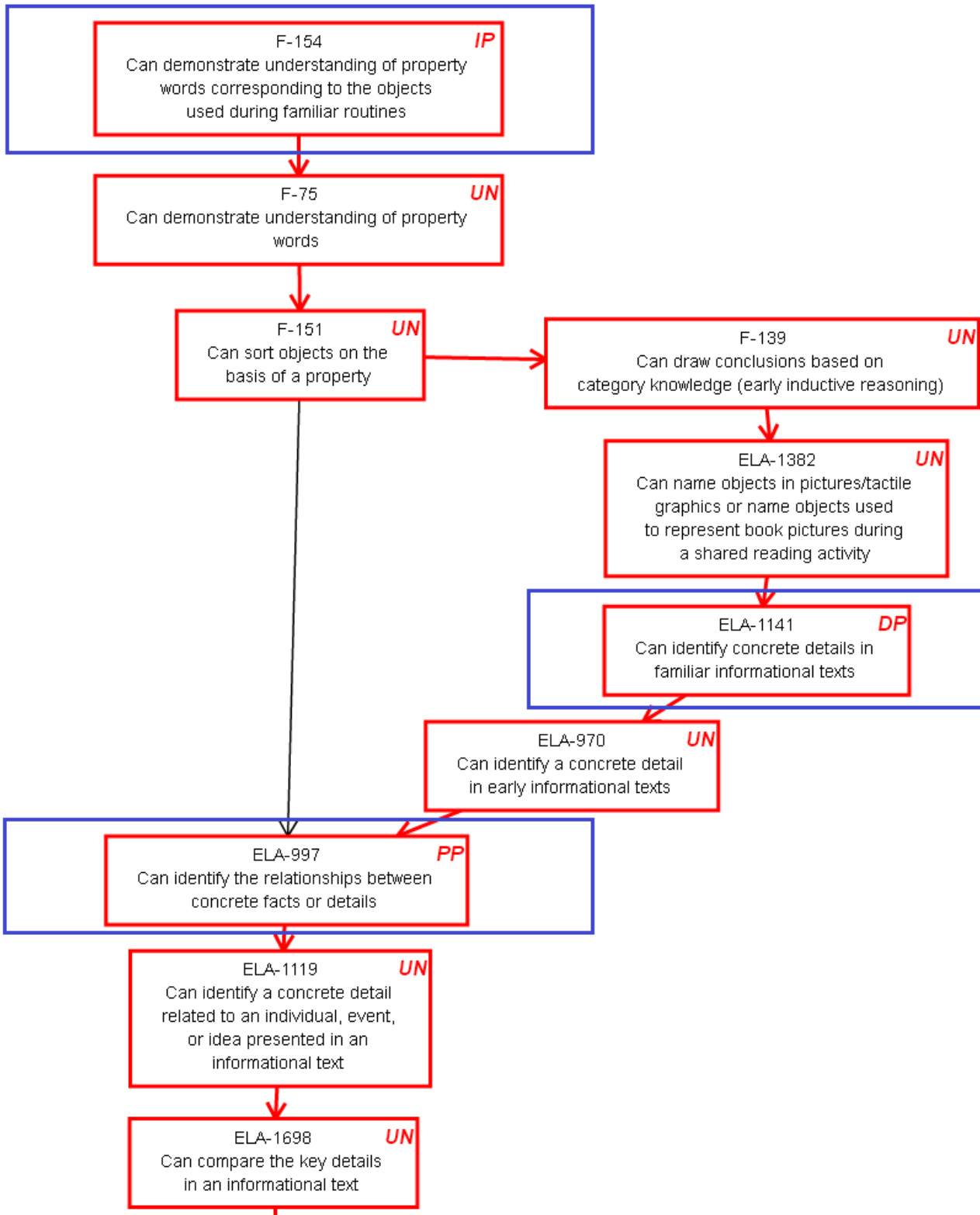
© 2018 The Dynamic Learning Maps Essential Elements, linkage levels, and nodes are copyrighted by the University of Kansas Center for Research. Linkage levels and nodes are available for use by educators in DLM states but may not be used by commercial entities without written permission. Linkage level information and nodes may not be altered by anyone without express written permission from the University of Kansas Center for Research.

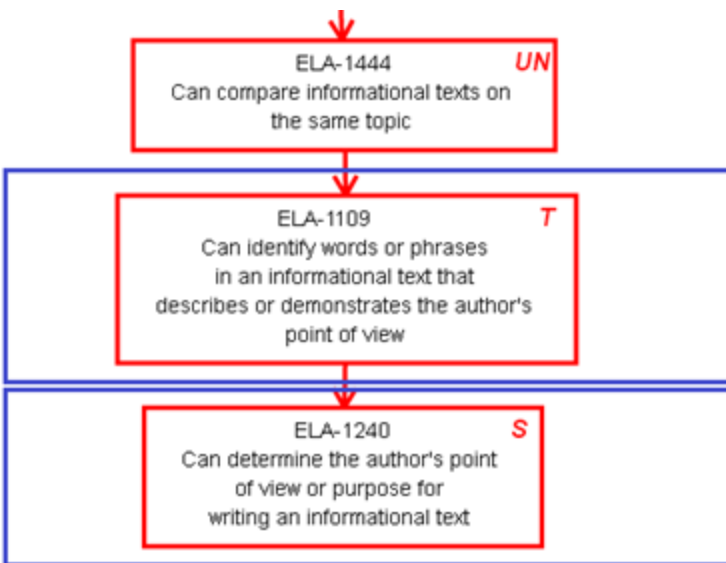
A diagram showing the relationship of nodes in the mini-map appears below.

Key to map codes in upper right corner of node boxes:

IP	Initial Precursor	SP	Supporting
DP	Distal Precursor	S	Successor
PP	Proximal Precursor	UN	Untested
T	Target		

ELA.EE.RI.6.6 - Identify words or phrases in the text that describe or show the author's point of view.





ESSENTIAL ELEMENT, LINKAGE LEVELS, AND MINI-MAP

ELA: GRADE 6

ELA.EE.RI.6.8

Grade-Level Standard	DLM Essential Element	Linkage Levels
ELA.RI.6.8 Trace and evaluate the argument and specific claims in a text, distinguishing claims that are supported by reasons and evidence from claims that are not	ELA.EE.RI.6.8 Distinguish claims in a text supported by reason	Initial Precursor: <ul style="list-style-type: none"> Can demonstrate an understanding that objects differ in the physical characteristics and can make judgments of similarity or difference based on the physical characteristics of objects Distal Precursor: <ul style="list-style-type: none"> Can identify the details that have some relationship to the topic of a paragraph in an informational text Proximal Precursor: <ul style="list-style-type: none"> Can determine the details used to defend a claim in a text Target: <ul style="list-style-type: none"> Can distinguish between claims that a speaker or author supports with evidence from those that are not factually supported Successor: <ul style="list-style-type: none"> Can determine the specific points that an author or speaker uses that corroborate and support a claim

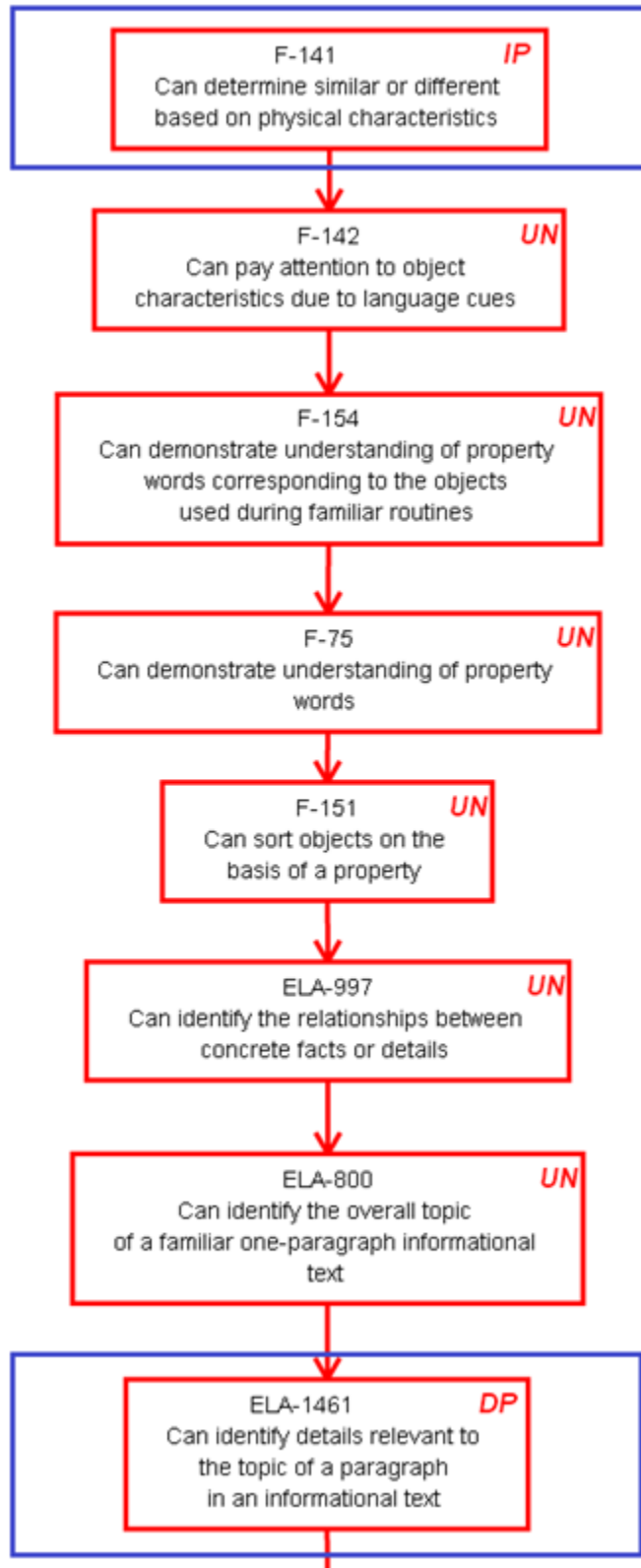
© 2018 The Dynamic Learning Maps Essential Elements, linkage levels, and nodes are copyrighted by the University of Kansas Center for Research. Linkage levels and nodes are available for use by educators in DLM states but may not be used by commercial entities without written permission. Linkage level information and nodes may not be altered by anyone without express written permission from the University of Kansas Center for Research.

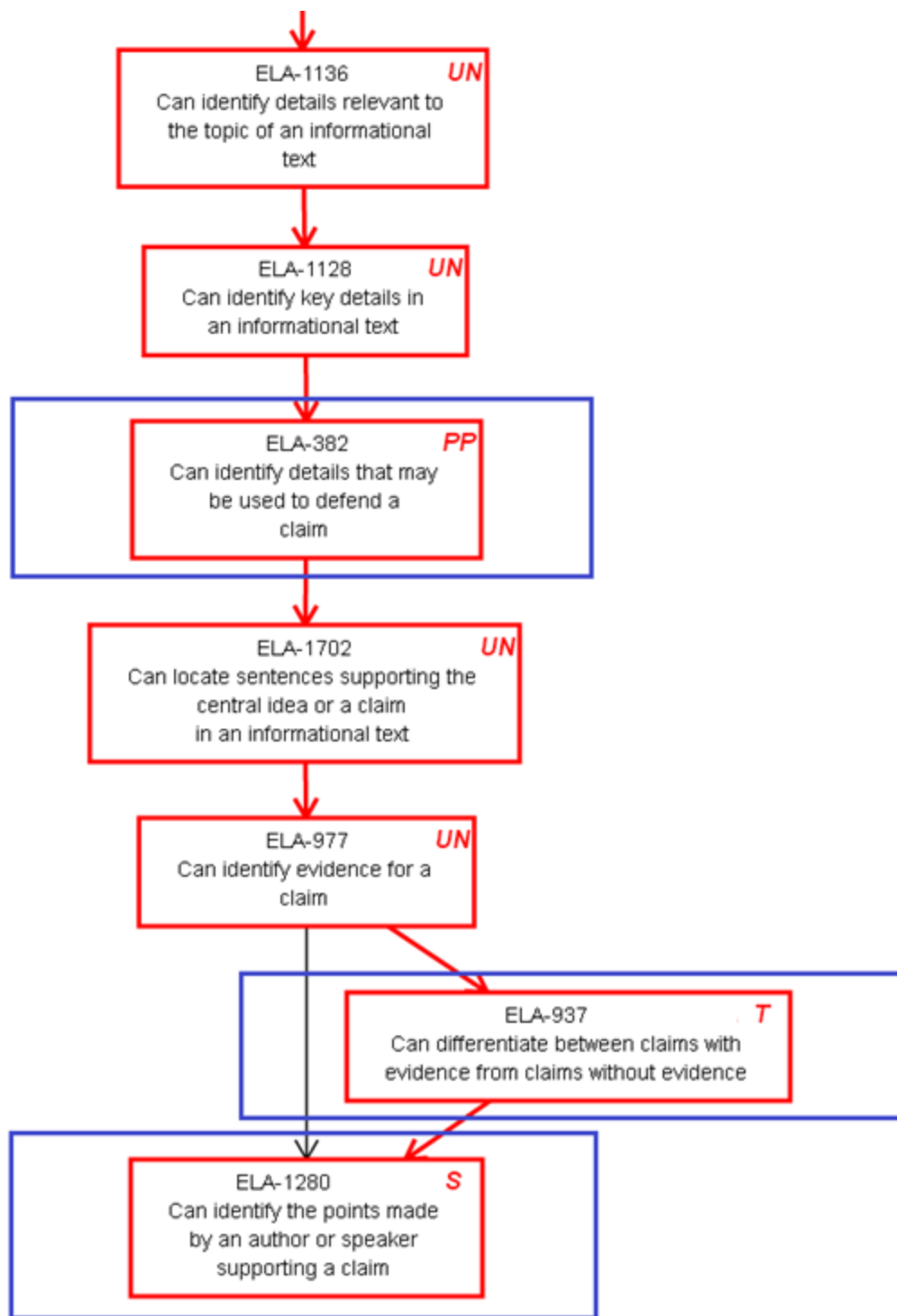
A diagram showing the relationship of nodes in the mini-map appears below.

Key to map codes in upper right corner of node boxes:

IP	Initial Precursor	SP	Supporting
DP	Distal Precursor	S	Successor
PP	Proximal Precursor	UN	Untested
T	Target		

ELA.EE.RI.6.8 - Distinguish claims in a text supported by reason.





ESSENTIAL ELEMENT, LINKAGE LEVELS, AND MINI-MAP

ELA: GRADE 6

EE.L.6.5.A

Grade-Level Standard	DLM Essential Element	Linkage Levels
ELA.L.6.5.a Interpret figures of speech (e.g., personification) in context	ELA.EE.L.6.5.a Identify the meaning of simple similes (e.g., The man was as big as a tree.)	Initial Precursor: <ul style="list-style-type: none"> Can understand adjectives in others' speech Distal Precursor: <ul style="list-style-type: none"> Can ascertain which words or phrases fit the meaning of literal sentences in a text and can complete those sentences by choosing the best ones Proximal Precursor: <ul style="list-style-type: none"> Can understand that words can have multiple meanings that may include a concrete and psychological meaning (e.g., "sweet") Target: <ul style="list-style-type: none"> Can determine the meaning of similes and metaphors Successor: <ul style="list-style-type: none"> Can interpret figures of speech (or phrases that go beyond a literal interpretation) including idioms, metaphors, and similes

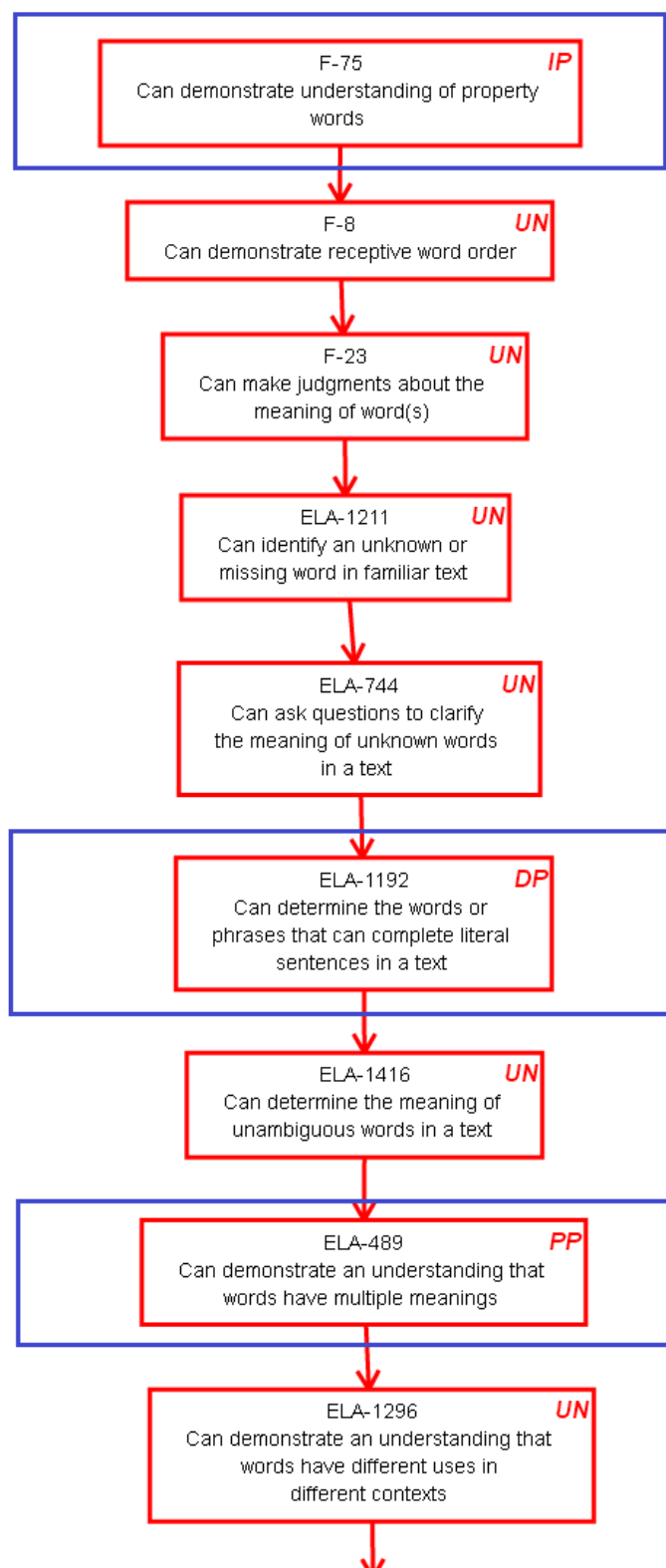
© 2018 The Dynamic Learning Maps Essential Elements, linkage levels, and nodes are copyrighted by the University of Kansas Center for Research. Linkage levels and nodes are available for use by educators in DLM states but may not be used by commercial entities without written permission. Linkage level information and nodes may not be altered by anyone without express written permission from the University of Kansas Center for Research.

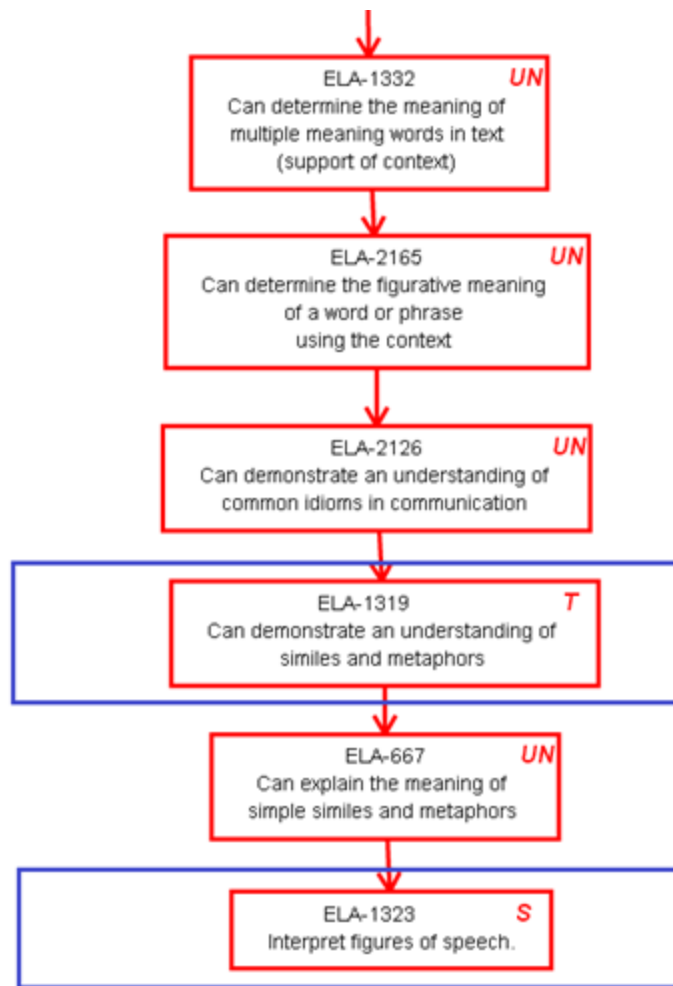
A diagram showing the relationship of nodes in the mini-map appears below.

Key to map codes in upper right corner of node boxes:

IP	Initial Precursor	SP	Supporting
DP	Distal Precursor	S	Successor
PP	Proximal Precursor	UN	Untested
T	Target		

ELA.EE.L.6.5.a - Identify the meaning of simple similes (e.g., The man was as big as a tree.).





ESSENTIAL ELEMENT, LINKAGE LEVELS, AND MINI-MAP

ELA: GRADE 6

ELA.EE.L.6.5.B

Grade-Level Standard	DLM Essential Element	Linkage Levels
ELA.L.6.5.b Use the relationship between particular words (e.g., cause/effect, part/whole, item/category) to better understand each of the words	ELA.EE.L.6.5.b Demonstrate understanding of words by identifying other words with similar and different meanings	Initial Precursor: <ul style="list-style-type: none"> Using their categorical knowledge, can make generalizations about the category to novel instances of that category Distal Precursor: <ul style="list-style-type: none"> Can demonstrate an understanding of words with opposite meaning (e.g., cold, hot, up, down) Proximal Precursor: <ul style="list-style-type: none"> Can identify two adjectives or two verbs with a largely opposite meaning Target: <ul style="list-style-type: none"> Can determine which words relate to a target word by having similar or different meanings. This includes words varying in how similar or different in meaning they are to a target word Successor: <ul style="list-style-type: none"> Can determine the synonyms and antonyms of a target word based on the similarities and differences in their meaning

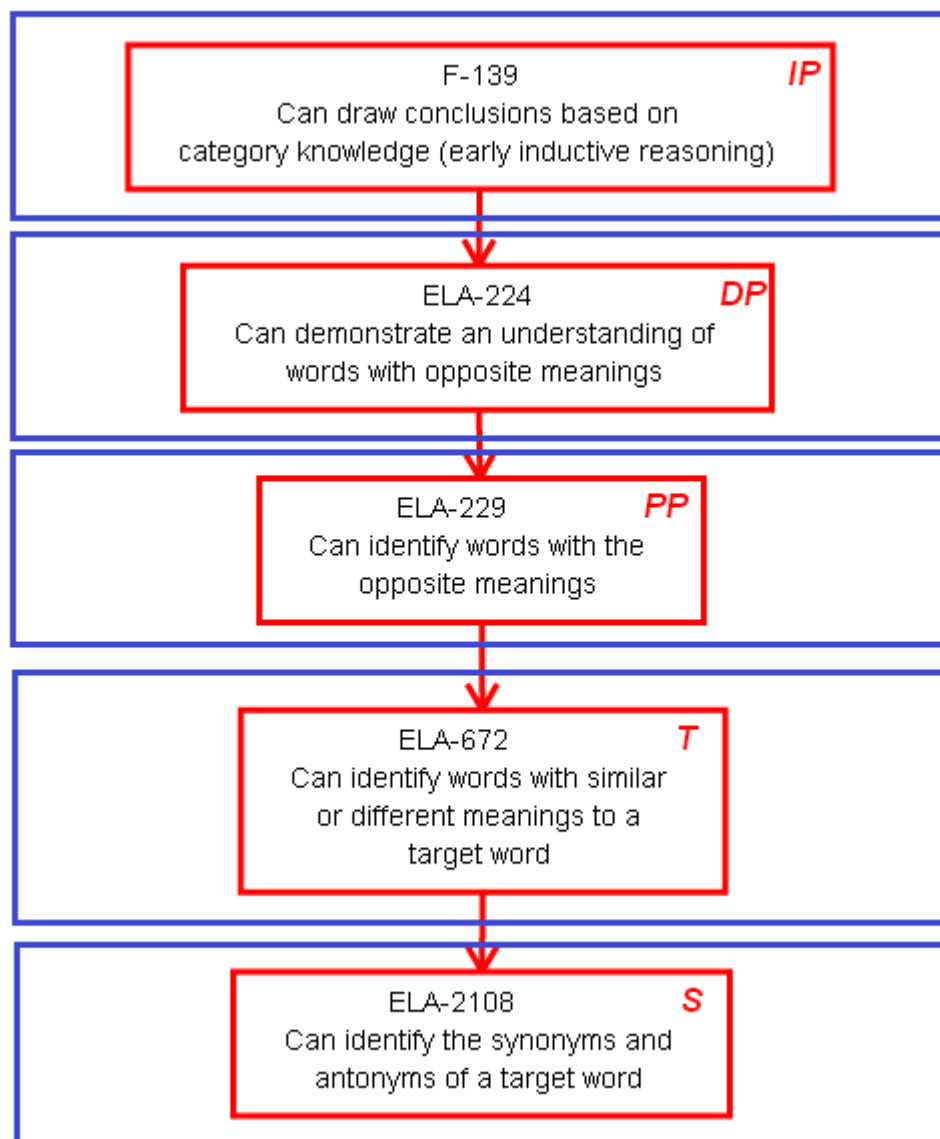
© 2018 The Dynamic Learning Maps Essential Elements, linkage levels, and nodes are copyrighted by the University of Kansas Center for Research. Linkage levels and nodes are available for use by educators in DLM states but may not be used by commercial entities without written permission. Linkage level information and nodes may not be altered by anyone without express written permission from the University of Kansas Center for Research.

A diagram showing the relationship of nodes in the mini-map appears below.

Key to map codes in upper right corner of node boxes:

IP	Initial Precursor	SP	Supporting
DP	Distal Precursor	S	Successor
PP	Proximal Precursor	UN	Untested
T	Target		

ELA.EE.L.6.5.b - Demonstrate understanding of words by identifying other words with similar and different meanings.



ESSENTIAL ELEMENT, LINKAGE LEVELS, AND MINI-MAP

ELA: GRADE 6

ELA.EE.RL.6.3

Grade-Level Standard	DLM Essential Element	Linkage Levels
ELA.RL.6.3 Describe how a particular story's or drama's plot unfolds in a series of episodes as well as how the characters respond or change as the plot moves toward a resolution	ELA.EE.RL.6.3 Can identify how a character responds to a challenge in a story	Initial Precursor: <ul style="list-style-type: none"> Can perform requested actions on objects. ("Kiss it. Throw it.") Distal Precursor: <ul style="list-style-type: none"> Student can identify the explicitly-stated actions of characters in a story Proximal Precursor: <ul style="list-style-type: none"> Can identify how a character's actions make them feel OR can identify how the character's desires or feelings lead to an action Target: <ul style="list-style-type: none"> Student can correctly identify how a character responds to a challenge that is presented within a story Successor: <ul style="list-style-type: none"> Can identify and recall how characters' actions affect the consequences that occur in the story afterwards

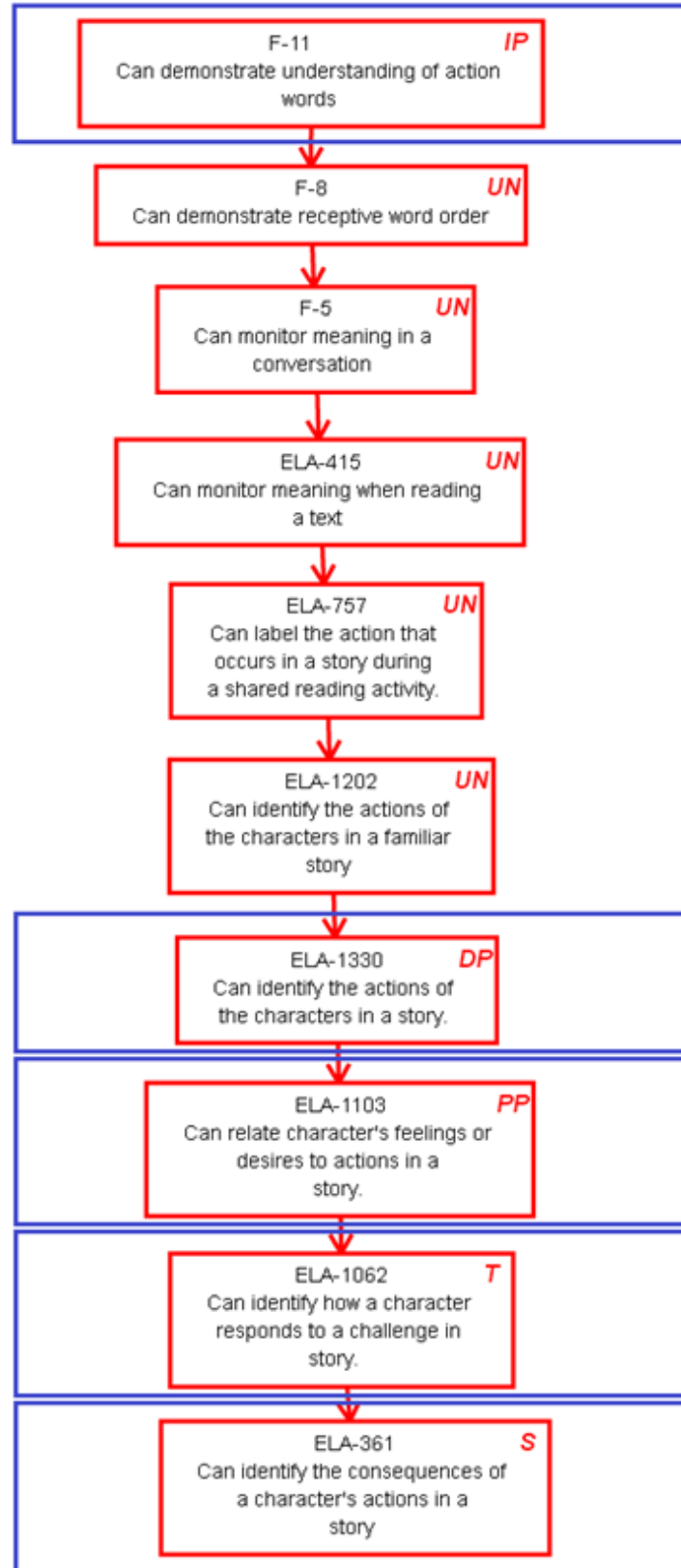
© 2018 The Dynamic Learning Maps Essential Elements, linkage levels, and nodes are copyrighted by the University of Kansas Center for Research. Linkage levels and nodes are available for use by educators in DLM states but may not be used by commercial entities without written permission. Linkage level information and nodes may not be altered by anyone without express written permission from the University of Kansas Center for Research.

A diagram showing the relationship of nodes in the mini-map appears below.

Key to map codes in upper right corner of node boxes:

IP	Initial Precursor	SP	Supporting
DP	Distal Precursor	S	Successor
PP	Proximal Precursor	UN	Untested
T	Target		

ELA.EE.RL.6.3 - Can identify how a character responds to a challenge in a story.



ESSENTIAL ELEMENT, LINKAGE LEVELS, AND MINI-MAP

ELA: GRADE 6

ELA.EE.RL.6.5

Grade-Level Standard	DLM Essential Element	Linkage Levels
ELA.RL.6.5 Analyze how a particular sentence, chapter, scene, or stanza fits into the overall structure of a text and contributes to the development of the theme, setting, or plot	ELA.EE.RL.6.5 Determine the structure of a text (e.g., story, poem, or drama)	Initial Precursor: <ul style="list-style-type: none"> Can recognize when he or she encounters familiar people, objects, places, and events Distal Precursor: <ul style="list-style-type: none"> Can identify elements in a story (characters, other key details in the text) when asked Proximal Precursor: <ul style="list-style-type: none"> Can determine the events that come at the beginning, middle, and end of a narrative containing a clear and linear text structure Target: <ul style="list-style-type: none"> Student can use information about structure to make determinations about what comes next in a text Successor: <ul style="list-style-type: none"> Student can compare the structure of two or more texts (e.g., stories, poems, or dramas)

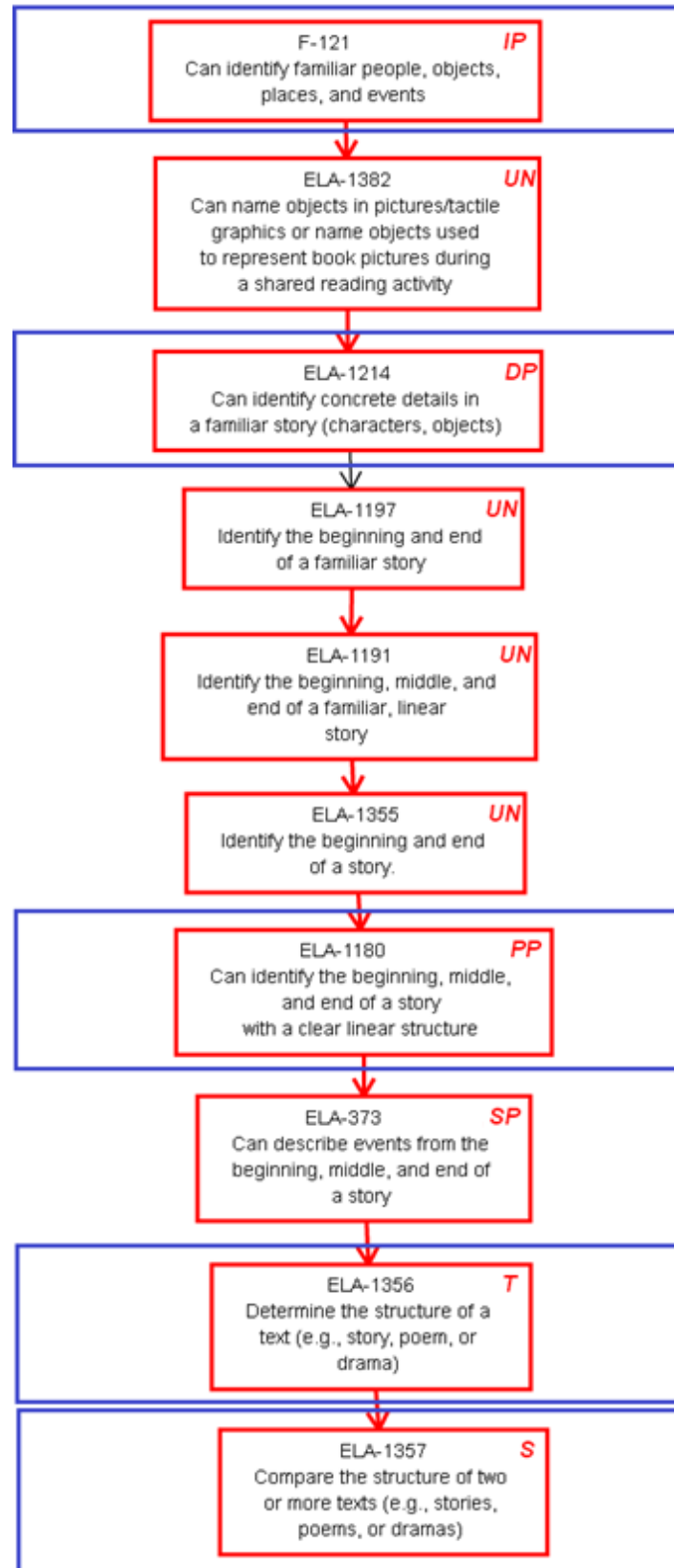
© 2018 The Dynamic Learning Maps Essential Elements, linkage levels, and nodes are copyrighted by the University of Kansas Center for Research. Linkage levels and nodes are available for use by educators in DLM states but may not be used by commercial entities without written permission. Linkage level information and nodes may not be altered by anyone without express written permission from the University of Kansas Center for Research.

A diagram showing the relationship of nodes in the mini-map appears below.

Key to map codes in upper right corner of node boxes:

IP	Initial Precursor	SP	Supporting
DP	Distal Precursor	S	Successor
PP	Proximal Precursor	UN	Untested
T	Target		

ELA.EE.RL.6.5 - Determine the structure of a text (e.g., story, poem, or drama).



ESSENTIAL ELEMENT, LINKAGE LEVELS, AND MINI-MAP

ELA: GRADE 6

ELA.EE.RI.6.3

Grade-Level Standard	DLM Essential Element	Linkage Levels
ELA.RI.6.3 Analyze in detail how a key individual, event, or idea is introduced, illustrated, and elaborated in a text (e.g., through examples or anecdotes)	ELA.EE.RI.6.3 Identify a detail that elaborates upon individuals, events, or ideas introduced in a text	Initial Precursor: <ul style="list-style-type: none"> Can determine some of the relevant words for describing people, places, things, or events familiar to the student Distal Precursor: <ul style="list-style-type: none"> Can provide real-life examples of words connected to a use (describe people who are friendly) Proximal Precursor: <ul style="list-style-type: none"> Can determine whether a concrete detail is related to an individual, event, or idea discussed in an informational text Target: <ul style="list-style-type: none"> Can determine when specific details provided in an informational text expand and elaborate on other details in the same text Successor: <ul style="list-style-type: none"> Can identify details that are related to the main idea of a text

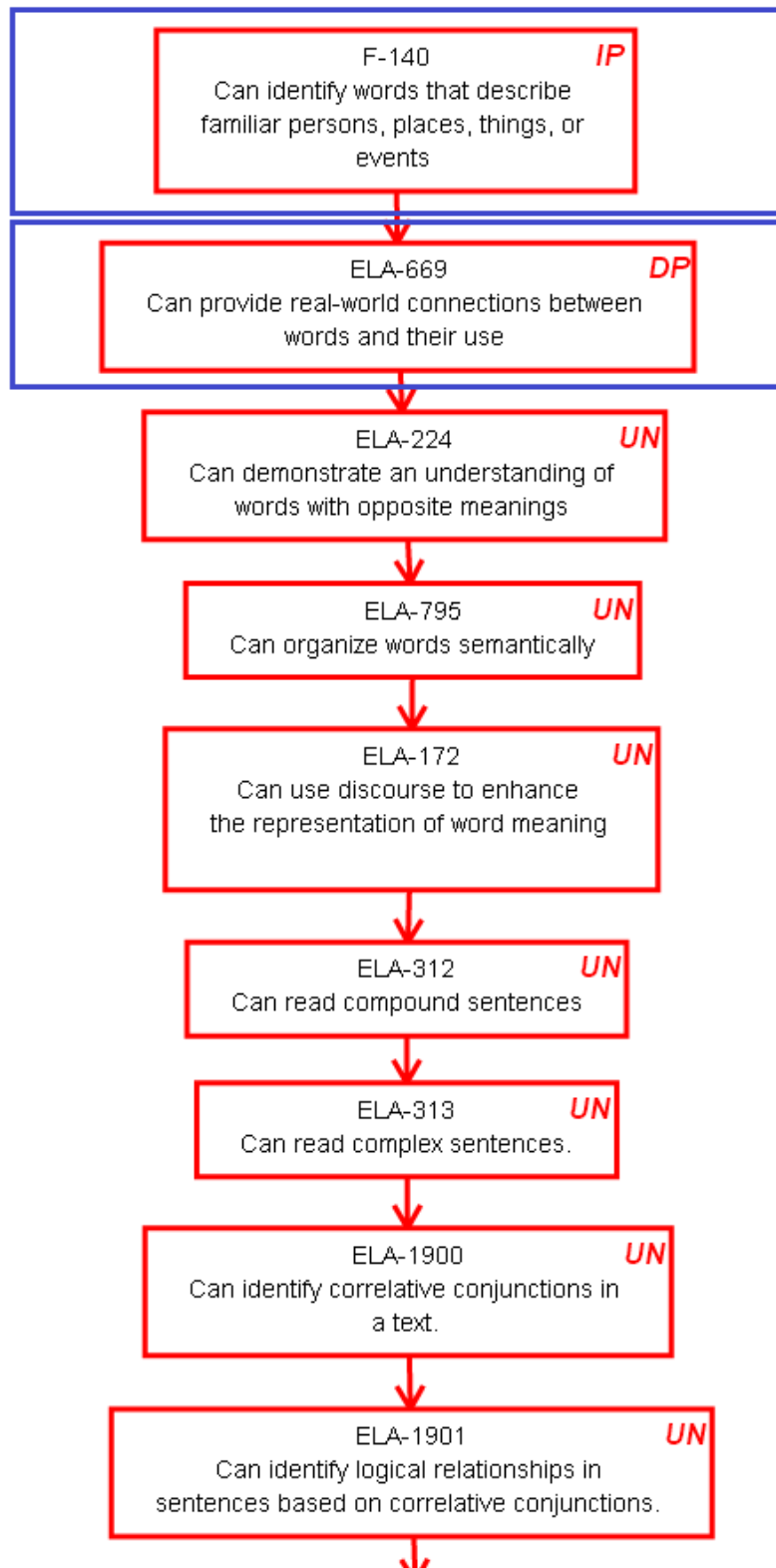
© 2018 The Dynamic Learning Maps Essential Elements, linkage levels, and nodes are copyrighted by the University of Kansas Center for Research. Linkage levels and nodes are available for use by educators in DLM states but may not be used by commercial entities without written permission. Linkage level information and nodes may not be altered by anyone without express written permission from the University of Kansas Center for Research.

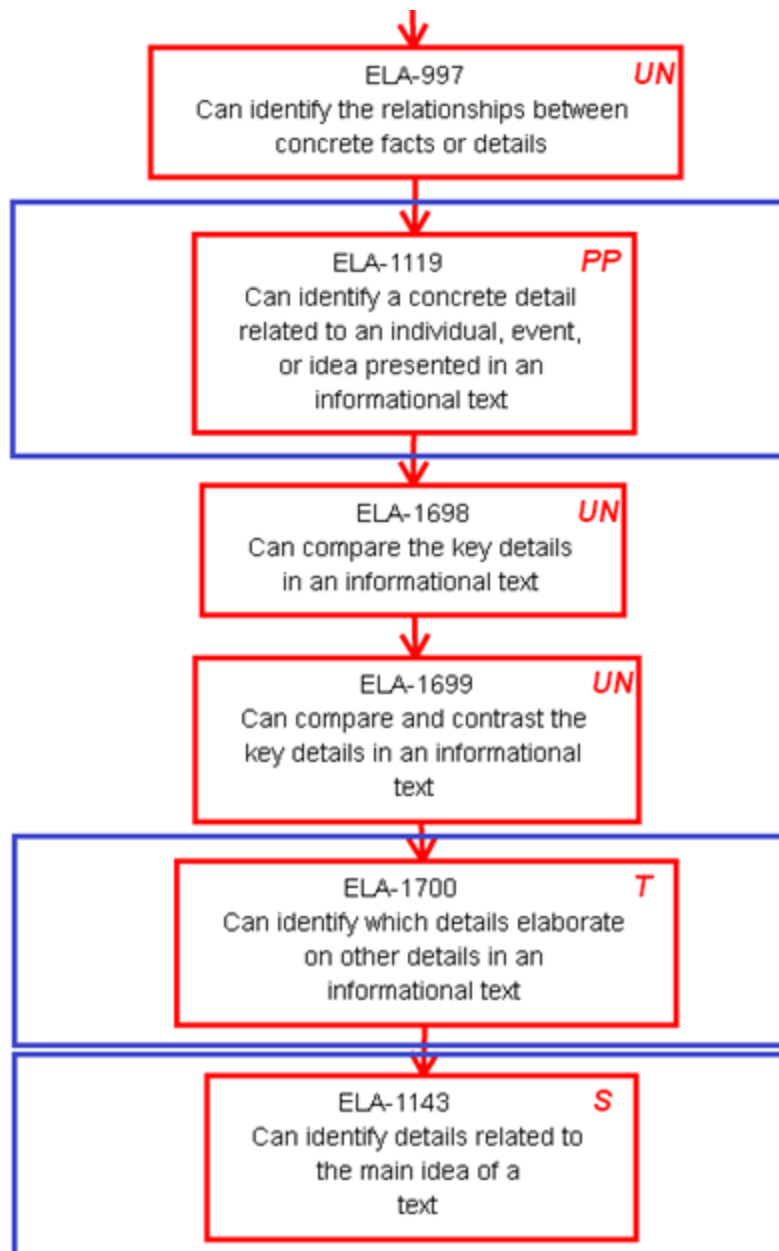
A diagram showing the relationship of nodes in the mini-map appears below.

Key to map codes in upper right corner of node boxes:

IP	Initial Precursor	SP	Supporting
DP	Distal Precursor	S	Successor
PP	Proximal Precursor	UN	Untested
T	Target		

ELA.EE.RI.6.3 - Identify a detail that elaborates upon individuals, events, or ideas introduced in a text.





ESSENTIAL ELEMENT, LINKAGE LEVELS, AND MINI-MAP

ELA: GRADE 6

ELA.EE.RI.6.9

Grade-Level Standard	DLM Essential Element	Linkage Levels
ELA.RI.6.9 Compare and contrast one author's presentation of events with that of another (e.g., a memoir written by and a biography on the same person)	ELA.EE.RI.6.9 Compare and contrast how two texts describe the same event	Initial Precursor: <ul style="list-style-type: none"> As a result of experience with a routine, the student is able to identify actions associated with the routine Distal Precursor: <ul style="list-style-type: none"> Can identify specific events in a familiar information text Proximal Precursor: <ul style="list-style-type: none"> Can identify information that indicates the temporal order of ideas or events presented in an informational text Target: <ul style="list-style-type: none"> Can identify similarities and differences in multiple perspectives of accounts on a single event or topic Successor: <ul style="list-style-type: none"> Can discover the similarities and differences in how two different informational texts on the same topic present the details to the reader. This presentation would include the specific details that are presented, how the details are arranged, and what is drawn from the details

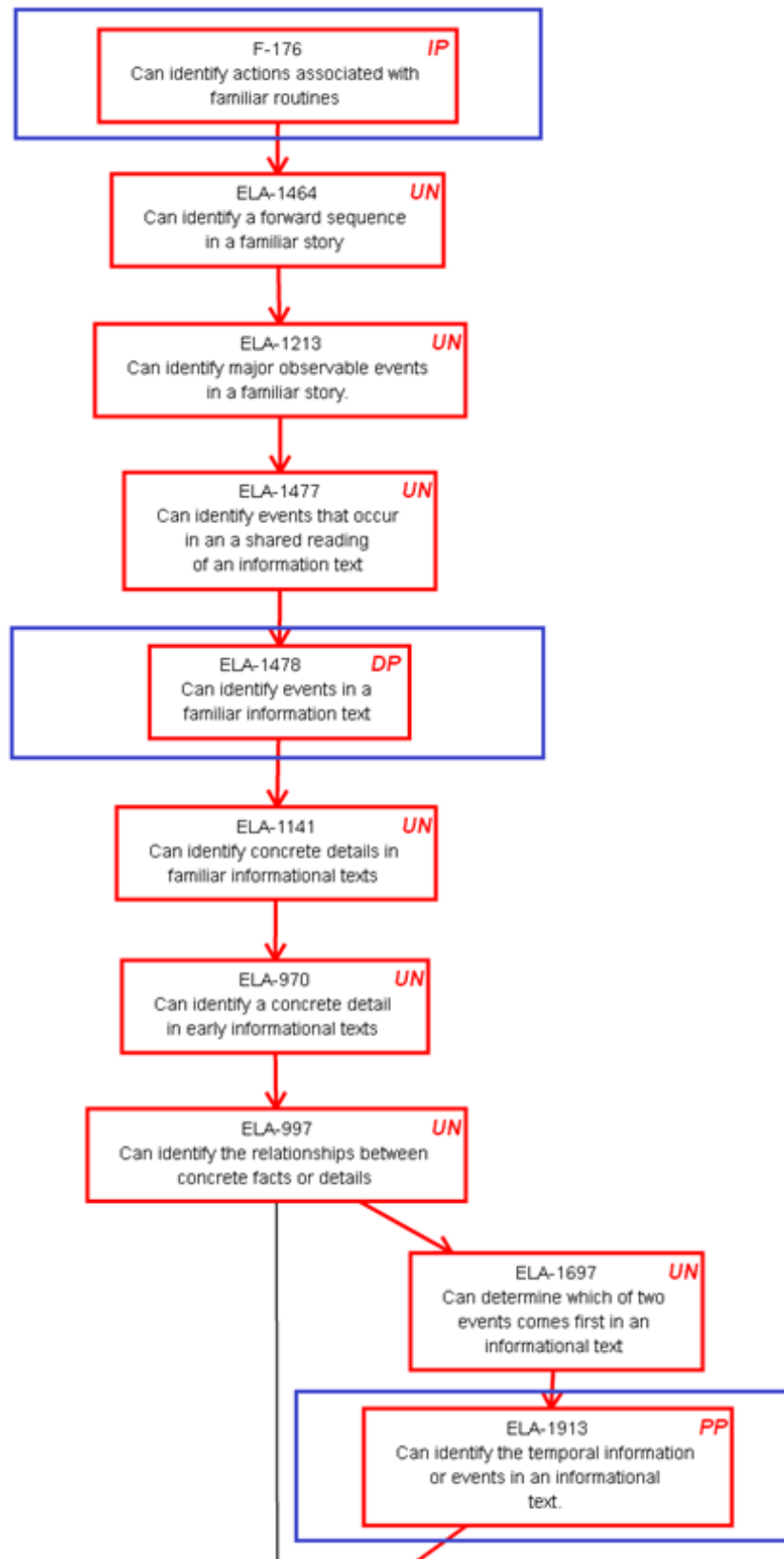
© 2018 The Dynamic Learning Maps Essential Elements, linkage levels, and nodes are copyrighted by the University of Kansas Center for Research. Linkage levels and nodes are available for use by educators in DLM states but may not be used by commercial entities without written permission. Linkage level information and nodes may not be altered by anyone without express written permission from the University of Kansas Center for Research.

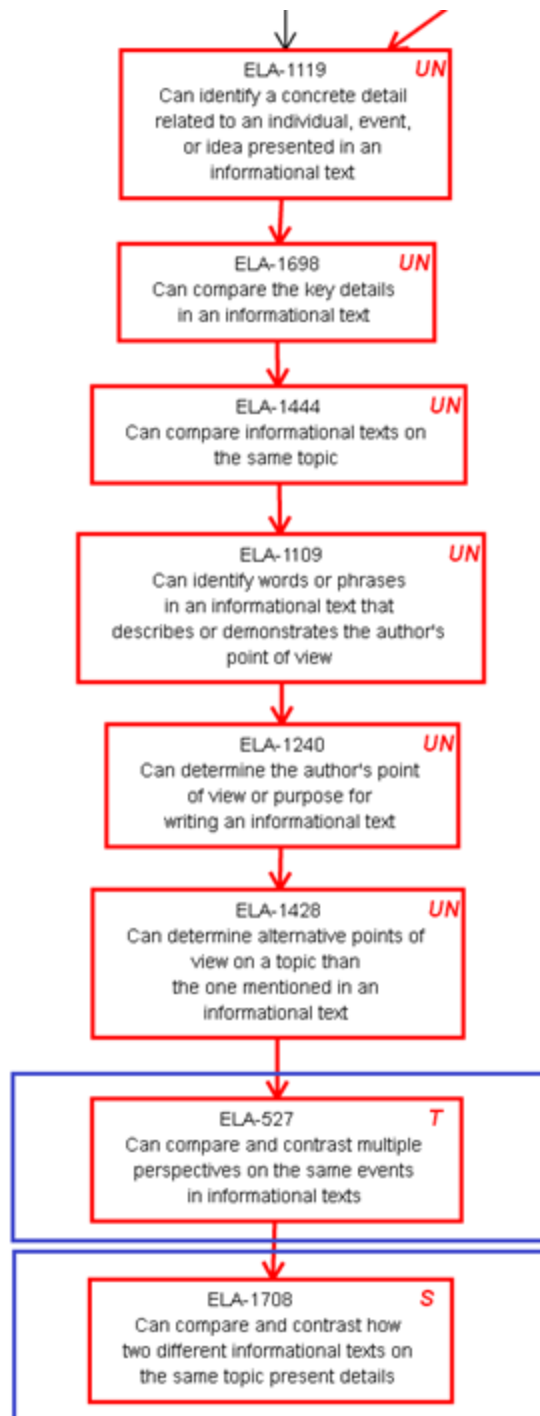
A diagram showing the relationship of nodes in the mini-map appears below.

Key to map codes in upper right corner of node boxes:

IP	Initial Precursor	SP	Supporting
DP	Distal Precursor	S	Successor
PP	Proximal Precursor	UN	Untested
T	Target		

ELA.EE.RI.6.9 - Compare and contrast how two texts describe the same event.





ESSENTIAL ELEMENT, LINKAGE LEVELS, AND MINI-MAP

ELA: GRADE 6

ELA.EE.L.6.2.B

Grade-Level Standard	DLM Essential Element	Linkage Levels
ELA.L.6.2.b Spell correctly	ELA.EE.L.6.2.b Spell untaught words phonetically, drawing on letter-sound relationships and common spelling patterns	EMERGENT WRITING (EW.6): <ul style="list-style-type: none"> • Initial Precursor: Can recognize the sound of the letter of their first name in words they hear and see, and can correctly represent this letter when spelling words that start with the same letter • Distal Precursor: Can produce a string of letters (student attempts to write words) by combining random letters
		CONVENTIONAL WRITING (CW.6): <ul style="list-style-type: none"> • Proximal Precursor: Can use spelling patterns (e.g., rimes) in familiar words to spell new words • Target: Can use letter-sound knowledge to spell words phonetically by including letters that represent sounds from the word • Successor: Can spell words with inflectional endings (e.g., walked, eats, sleeping)

© 2018 The Dynamic Learning Maps Essential Elements, linkage levels, and nodes are copyrighted by the University of Kansas Center for Research. Linkage levels and nodes are available for use by educators in DLM states but may not be used by commercial entities without written permission. Linkage level information and nodes may not be altered by anyone without express written permission from the University of Kansas Center for Research.

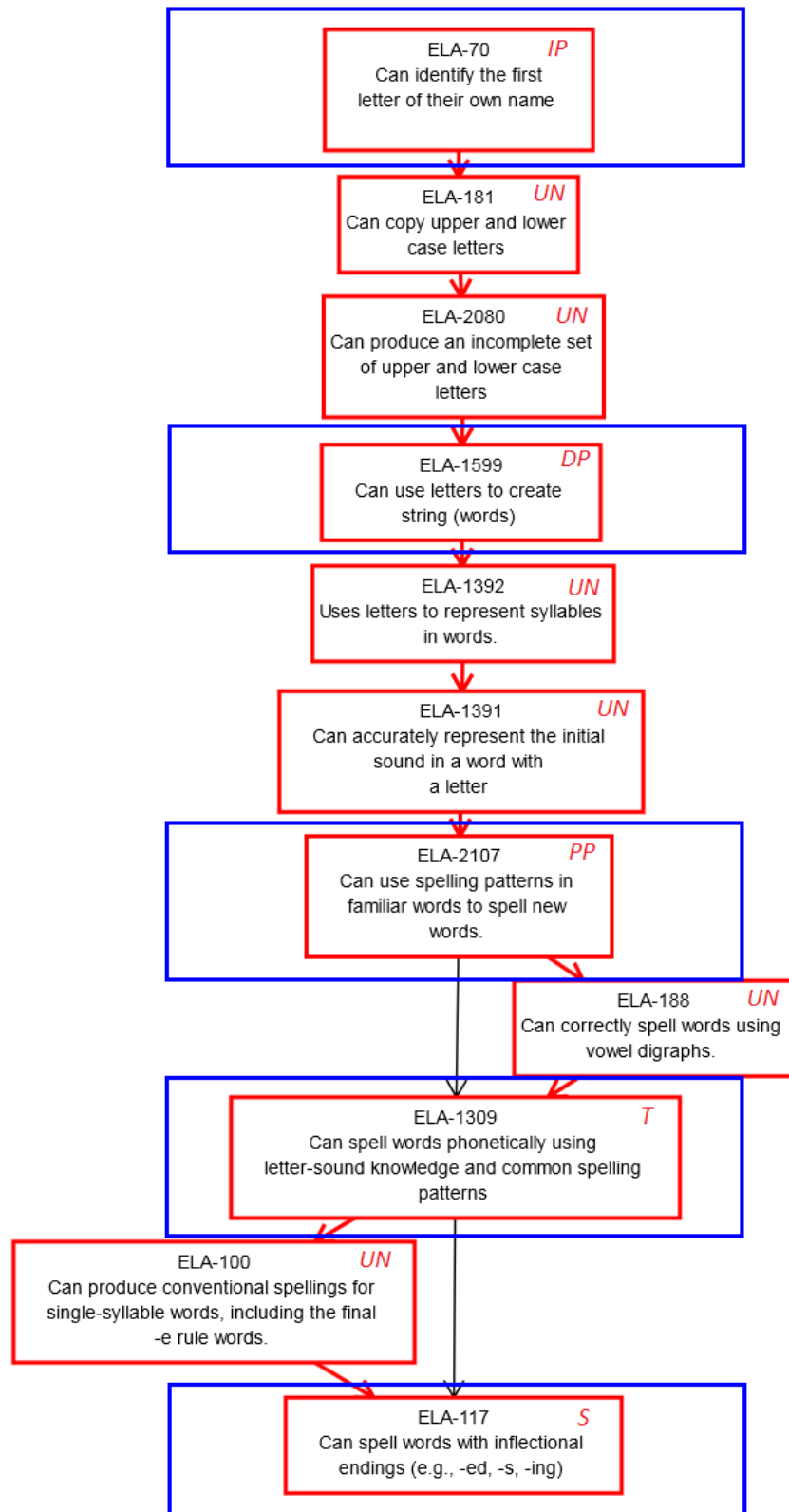
This EE is tested in an ELA writing testlet. Writing testlets are assessed at two levels: Emergent Writing and Conventional Writing. The initial and distal precursor nodes are assessed in the emergent writing testlet in Grade 6 with two other Essential Elements: EE.W.6.2.a and EE.W.6.2.b. The proximal precursor, target and successor nodes are assessed in the conventional writing testlet in Grade 6 with two other Essential Elements: EE.W.6.2.a and EE.W.6.2.b.

A diagram showing the relationship of nodes in the mini-map appears below.

Key to map codes in upper right corner of node boxes:

IP	Initial Precursor	SP	Supporting
DP	Distal Precursor	S	Successor
PP	Proximal Precursor	UN	Untested
T	Target		

ELA.EE.L.6.2.b - Spell untaught words phonetically, drawing on letter-sound relationships and common spelling patterns.



ESSENTIAL ELEMENT, LINKAGE LEVELS, AND MINI-MAP

ELA: GRADE 6 ELA.EE.W.6.2.A

Grade-Level Standard	DLM Essential Element	Linkage Levels
ELA.W.6.2.a Introduce a topic; organize ideas, concepts, and information, using strategies such as definition, classification, comparison/contrast, and cause/effect; include formatting (e.g., headings), graphics (e.g., charts, tables), and multimedia when useful to aiding comprehension	ELA.EE.W.6.2.a Introduce a topic and write to convey ideas and information about it including visual, tactual, or multimedia information as appropriate	EMERGENT WRITING (EW.6): <ul style="list-style-type: none"> • Initial Precursor: Given a choice of two objects, uses eye-gaze, physical movement, gesture or vocalization to indicate choice • Distal Precursor: Can respond to wh-questions regarding choice of topic and other questions related to writing about the topic.
		CONVENTIONAL WRITING (CW.6): <ul style="list-style-type: none"> • Proximal Precursor: Can select a topic for writing an informational text and then find information that is either tactile, visual, or multimedia for use when writing the text • Target: Can introduce an informational topic while writing and extend by writing about ideas and information related to the topic • Successor: Student is able to produce an informational piece of writing in which the topic is clearly introduced and the details about the topic (may be visual, tactual, or multimedia) are presented within a clear organizational structure

© 2018 The Dynamic Learning Maps Essential Elements, linkage levels, and nodes are copyrighted by the University of Kansas Center for Research. Linkage levels and nodes are available for use by educators in DLM states but may not be used by commercial entities without written permission. Linkage level information and nodes may not be altered by anyone without express written permission from the University of Kansas Center for Research.

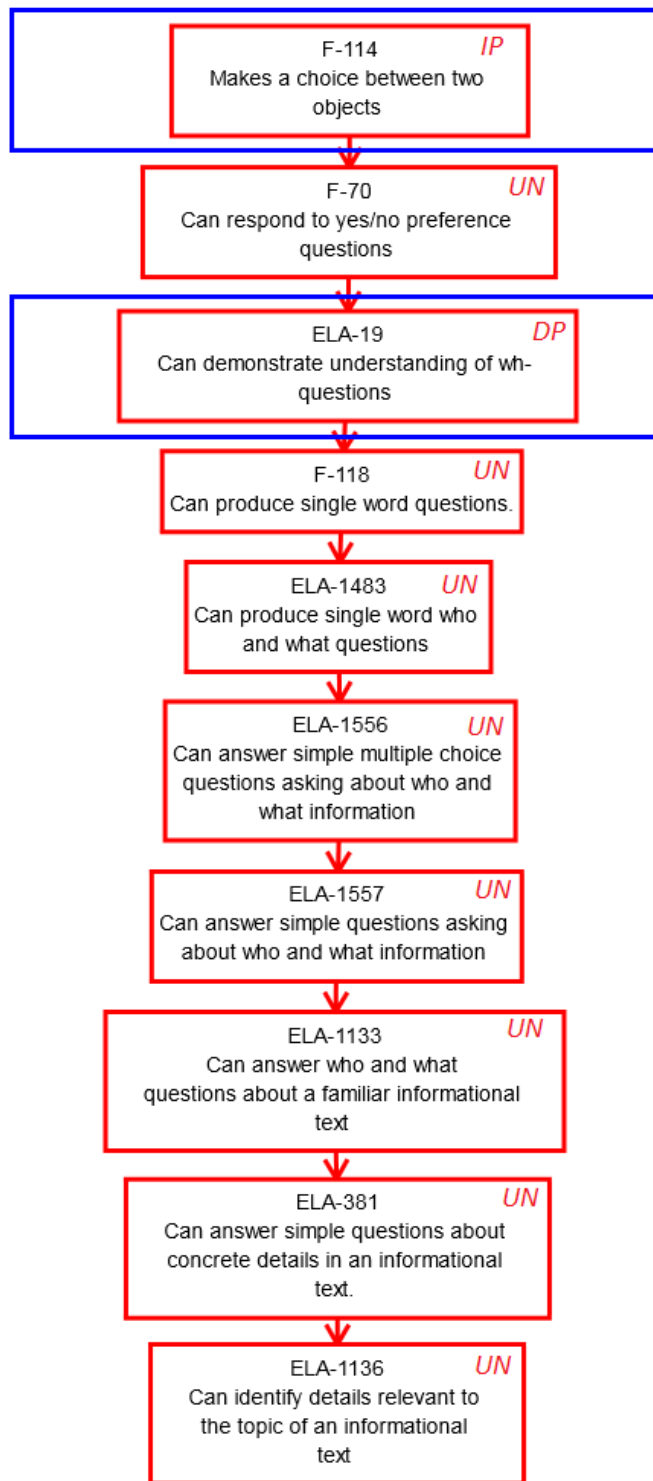
This EE is tested in an ELA writing testlet. Writing testlets are assessed at two levels: Emergent Writing and Conventional Writing. The initial and distal precursor nodes are assessed in the emergent writing testlet in Grade 6 with one other Essential Element: EE.W.6.2.b. For states using the integrated model blueprint, EE.L.6.2.b will also be assessed. The proximal precursor, target and successor nodes are assessed in the conventional writing testlet in Grade 6 with one other Essential Element: EE.W.6.2.b. For states using the integrated model blueprint, EE.L.6.2.b will also be assessed.

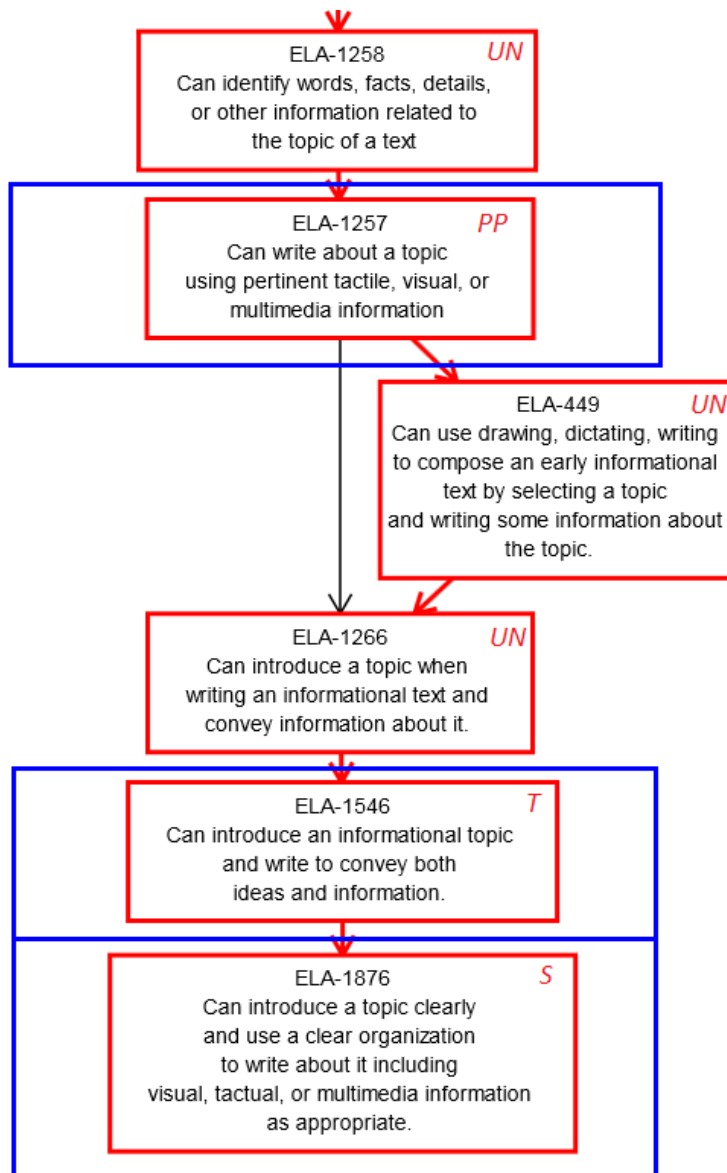
A diagram showing the relationship of nodes in the mini-map appears below.

Key to map codes in upper right corner of node boxes:

IP	Initial Precursor	SP	Supporting
DP	Distal Precursor	S	Successor
PP	Proximal Precursor	UN	Untested
T	Target		

ELA.EE.W.6.2.a - Introduce a topic and write to convey ideas and information about it including visual, tactual, or multimedia information as appropriate.





ESSENTIAL ELEMENT, LINKAGE LEVELS, AND MINI-MAP

ELA: GRADE 6

ELA.EE.W.6.2.B

Grade-Level Standard	DLM Essential Element	Linkage Levels
ELA.W.6.2.b Develop the topic with relevant facts, definitions, concrete details, quotations, or other information and examples	ELA.EE.W.6.2.b Provide facts, details, or other information related to the topic	EMERGENT WRITING (EW.6): <ul style="list-style-type: none"> • Initial Precursor: Can determine some of the relevant words for describing people, places, things, or events familiar to the student • Distal Precursor: Can identify a photograph or object that is personally relevant to the student from a set of personally relevant and irrelevant photographs or objects and provide a specific detail about it
		CONVENTIONAL WRITING (CW.6): <ul style="list-style-type: none"> • Proximal Precursor: Can select a topic and use drawing, dictating, or writing to compose a message with at least one fact or detail about the selected topic (message may require some interpretation as student may not be using phonetic spelling or complete simple sentences) • Target: Student is already able to identify facts and details related to topic from a set of choices. Now they are able to provide written facts, details and/or information about a topic • Successor: Student is able to put facts or details identified about a topic into writing

© 2018 The Dynamic Learning Maps Essential Elements, linkage levels, and nodes are copyrighted by the University of Kansas Center for Research. Linkage levels and nodes are available for use by educators in DLM states but may not be used by commercial entities without written permission. Linkage level information and nodes may not be altered by anyone without express written permission from the University of Kansas Center for Research.

This EE is tested in an ELA writing testlet. Writing testlets are assessed at two levels: Emergent Writing and Conventional Writing. The initial and distal precursor nodes are assessed in the emergent writing testlet in Grade 6 with one other Essential Element: EE.W.6.2.a. For states using the integrated model blueprint, EE.L.6.2.b will also be assessed. The proximal precursor, target and successor nodes are assessed in the conventional writing testlet in Grade 6 with one other Essential Element: EE.W.6.2.a. For states using the integrated model blueprint, EE.L.6.2.b will also be assessed.

A diagram showing the relationship of nodes in the mini-map appears below.

Key to map codes in upper right corner of node boxes:

IP	Initial Precursor	SP	Supporting
DP	Distal Precursor	S	Successor
PP	Proximal Precursor	UN	Untested
T	Target		

ELA.EE.W.6.2.b - Provide facts, details, or other information related to the topic.

