

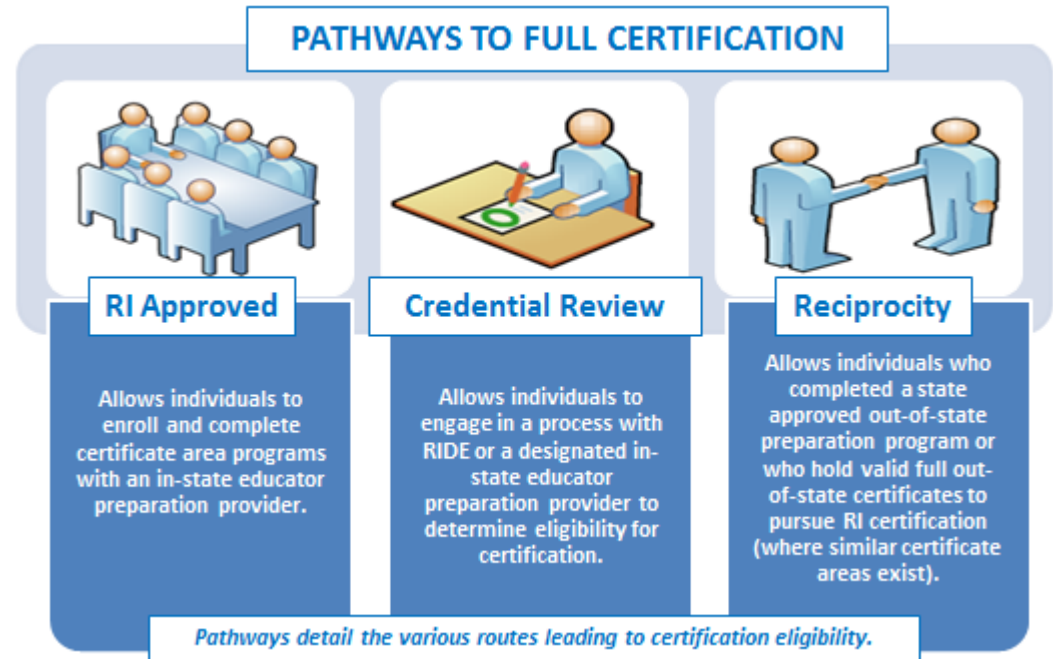


Administrator Requirements for Full Certification

Applicants must satisfy all requirements in the following table for the certificate area(s) they are seeking¹. The table includes details for each certificate area including: the specific area, valid assignment details, available pathways, specific criteria, and required assessment(s). All full teacher certificate areas require the applicant to hold a Bachelor's degree from a regionally accredited institution.

All documentation listed within the requirements must be submitted with [application materials](#). Demonstration of completion of a certification pathway as well as demonstration of meeting all other requirements is necessary for certification.

Note: Applicants prepared in a program where the language of instruction was not English must achieve a passing score of 64 on the Versant Pro Speaking and Writing English assessments. Additionally, dependent certificate areas are noted with an asterisk and specify the prerequisite certificate (within the criteria).



Certificate Areas

Building Level Administrator	2
District Level Administrator - Curriculum, Instruction, and Assessment*	2
District Level Administrator - Curriculum, Instruction, and Assessment* (RIDE Credential Review).....	3
District Level Administrator Special Education*	3
District Level Administrator Special Education* (RIDE Credential Review).....	4
School Business Administrator	4
School Business Administrator (RIDE Credential Review)	5
Superintendent of Schools*	5
Superintendent of Schools* (RIDE Credential Review).....	6

¹ RI full certification demonstrates that an educator has met all RI certification requirements. RI full certification types include Initial, Professional, and Advanced certificates (all of which are multi-year certificates). RI full certification is comparable to National Association of State Directors of Teacher Education and Certification (NASDTEC) stage three or higher certificates and is recognized by other states for certificate reciprocity. RI full certification does not include preliminary certificates. Individuals pursuing their first full certificate should apply for their Initial certificate.



Administrator Requirements for Full Certification

CERTIFICATE & ASSIGNMENT	PATHWAY & CRITERIA	ASSESSMENT
<p>Building Level Administrator (12001)</p> <p><i>Valid for assignment as a Building Level Administrator in PK-12 RI public schools.</i></p>	<p>PATHWAYS:</p> <ul style="list-style-type: none"> ▪ Credential Review: CRCI, Reciprocity, RI Approved <p>EXPERIENCE:</p> <ul style="list-style-type: none"> ▪ 3 years of documented PK -12 professional experience <p>CRITERIA:</p> <ul style="list-style-type: none"> ▪ Advanced degree from a regionally accredited institution ▪ Completion of a 300 hour internship ▪ Demonstration of meeting the Professional Competencies of the Rhode Island Standards for Educational Leadership (RISEL) and the Content Competencies as prescribed by the National Policy Board for Educational Administration (NPBEA) 	<p>Go to www.ets.org for test registration, date, and locations.</p> <p>School Leaders Licensure Assessment (6011) with a score of 166</p>
<p>District Level Administrator - Curriculum, Instruction, and Assessment* (12011)</p> <p><i>Valid for assignment as a District Level Administrator - Curriculum and Instruction in PK - 12 RI public schools.</i></p>	<p>PATHWAYS:</p> <ul style="list-style-type: none"> • Credential Review: RIDE (see below), Reciprocity <p>CERTIFICATE: Hold a Building Level Administrator (12001)</p> <p>CRITERIA:</p> <ul style="list-style-type: none"> • Advanced degree from a regionally accredited institution • Demonstration of meeting the Professional Competencies of the Rhode Island Standards for Educational Leadership (RISEL) and the Content Competencies as prescribed by the National Policy Board for Educational Administration (NPBEA) 	<p>N/A</p>



Administrator Requirements for Full Certification

CERTIFICATE & ASSIGNMENT	PATHWAY & CRITERIA	ASSESSMENT
<p><u>RIDE CREDENTIAL REVIEW</u> District Level Administrator - Curriculum, Instruction, and Assessment* (12011)</p> <p><i>Valid for assignment as a District Level Administrator - Curriculum and Instruction in PK - 12 RI public schools.</i></p>	<p><u>CERTIFICATE:</u> Hold a Building Level Administrator (12001)</p> <p><u>CRITERIA:</u></p> <ul style="list-style-type: none"> ▪ Advanced degree from a regionally accredited institution ▪ Demonstration of meeting the Professional Competencies of the Rhode Island Standards for Educational Leadership (RISEL) and the Content Competencies as prescribed by the National Policy Board for Educational Administration (NPBEA) ▪ Graduate level coursework in each of the following areas of study: <ul style="list-style-type: none"> ○ Learning Theory ○ Curriculum Theory Design and Development ○ Supervision Theory, Application and Practice ○ Instructional Theory, Application and Practice ○ Research and Evaluation Related to Curriculum and Supervision of Instruction 	<p>N/A</p>
<p>District Level Administrator Special Education* (12012)</p> <p><i>Valid for assignment as a District Level Administrator - Special Education in grades PK - 12 in RI public schools.</i></p>	<p><u>PATHWAYS:</u></p> <ul style="list-style-type: none"> ▪ Credential Review: RIDE (see below), Reciprocity <p><u>CERTIFICATE:</u> Hold a Building Level Administrator (12001)</p> <p><u>EXPERIENCE:</u></p> <ul style="list-style-type: none"> ▪ 3 years professional education experience in teaching Special Education, as a Speech and Language Pathologist, as a School Social Worker, or as a School <p><u>OTHER CRITERIA:</u></p> <ul style="list-style-type: none"> ▪ Advanced degree from a regionally accredited institution ▪ Demonstration of meeting the Professional Competencies of the Rhode Island Standards for Educational Leadership (RISEL), Content Competencies as prescribed by the National Policy Board for Educational Administration (NPBEA), and the professional competencies as prescribed by the Council for Exceptional Children (CEC) for advanced content knowledge. 	<p>N/A</p>



Administrator Requirements for Full Certification

CERTIFICATE & ASSIGNMENT	PATHWAY & CRITERIA	ASSESSMENT
<p><u>RIDE CREDENTIAL REVIEW</u> District Level Administrator Special Education* (12012)</p> <p><i>Valid for assignment as a District Level Administrator - Special Education in grades PK - 12 in RI public schools.</i></p>	<p><u>CERTIFICATE:</u> Hold a Building Level Administrator (12001)</p> <p><u>EXPERIENCE:</u></p> <ul style="list-style-type: none"> ▪ 3 years professional education experience in teaching Special Education, as a Speech and Language Pathologist, as a School Social Worker, or as a School <p><u>OTHER CRITERIA:</u></p> <ul style="list-style-type: none"> ▪ Demonstration of meeting the Professional Competencies of the Rhode Island Standards for Educational Leadership (RISEL), Content Competencies as prescribed by the National Policy Board for Educational Administration (NPBEA), and the professional competencies as prescribed by the Council for Exceptional Children (CEC) for advanced content knowledge. ▪ Advanced degree in Special Education from an accredited institution or Master’s Degree from an accredited institution in any field of education to include fifteen(15) graduate level credits in special education as part of or beyond the Master’s Degree ▪ Not less than 9 semester hours of graduate level coursework to include work in each of the following areas: <ul style="list-style-type: none"> ○ Educational Administration of Special Education Programs ○ Supervision of Personnel ○ Curriculum Development and Evaluation grades K-12 	<p>N/A</p>
<p>School Business Administrator (12015)</p> <p><i>Valid for assignment as a School Business Administrator in grades PK - 12 in RI public schools.</i></p>	<p><u>PATHWAYS:</u></p> <ul style="list-style-type: none"> • Credential Review: RIDE (see below), Reciprocity <p><u>EXPERIENCE:</u></p> <ul style="list-style-type: none"> • 3 years of professional experience in financial management or school business operations <p><u>CRITERIA:</u></p> <ul style="list-style-type: none"> • Bachelor's degree from a regionally accredited institution • Demonstration of meeting the Professional Competencies of the Rhode Island Standards for Educational Leadership (RISEL) and the Content Competencies as prescribed by the Association of School Business Officials International (ASBO) 	<p>N/A</p>



Administrator Requirements for Full Certification

CERTIFICATE & ASSIGNMENT	PATHWAY & CRITERIA	ASSESSMENT
<p><u>RIDE CREDENTIAL REVIEW</u> School Business Administrator (12015)</p> <p><i>Valid for assignment as a School Business Administrator in grades PK - 12 in RI public schools.</i></p>	<p><u>EXPERIENCE:</u></p> <ul style="list-style-type: none"> • 3 years of professional experience in financial management or school business operations <p><u>CRITERIA:</u></p> <ul style="list-style-type: none"> • Demonstration of meeting the Professional Competencies of the Rhode Island Standards for Educational Leadership (RISEL) and the Content Competencies as prescribed by the Association of School Business Officials International (ASBO) • Bachelor's degree from a regionally accredited institution OR • Bachelor's degree in another area with a minimum of 24 semester hours of coursework in each of the following areas: <ul style="list-style-type: none"> ○ 9 credits in Accounting ○ 3 credits in Finance ○ 3 credits in Management ○ 9 credits in at least 2 of the following areas: Marketing, Law, Human Resources, School Finance, School Plant Planning, or Information Systems 	<p>N/A</p>
<p>Superintendent of Schools* (12016)</p> <p><i>Valid for assignment as a Superintendent of Schools in grades PK - 12 in Rhode Island public schools.</i></p>	<p><u>PATHWAYS:</u></p> <ul style="list-style-type: none"> • Credential Review: RIDE (see below), Reciprocity <p><u>CERTIFICATE:</u></p> <ul style="list-style-type: none"> • Building Level Administrator (12001) or significant leadership experience in organizations other than schools <p><u>CRITERIA:</u></p> <ul style="list-style-type: none"> • Advanced degree from a regionally accredited institution • Demonstration of meeting the Professional Competencies of the Rhode Island Standards for Educational Leadership (RISEL) and the Content Competencies as prescribed by the Association of School Business Officials International (NPBEA) 	<p>Go to www.ets.org for test registration, date, and locations.</p> <p>School Superintendent Assessment (6021) with a score of 160</p>



Administrator Requirements for Full Certification

CERTIFICATE & ASSIGNMENT	PATHWAY & CRITERIA	ASSESSMENT
<p><u>RIDE CREDENTIAL REVIEW</u> Superintendent of Schools* (12016)</p> <p><i>Valid for assignment as a Superintendent of Schools in grades PK - 12 in Rhode Island public schools.</i></p> <p>For more information on getting certified using this pathway or to request an application, contact the Office of Educator Quality and Certification at eqac@ride.ri.gov</p>	<p><u>CERTIFICATE:</u></p> <ul style="list-style-type: none"> Building Level Administrator (12001) or significant leadership experience in organizations other than schools <p><u>CRITERIA:</u></p> <ul style="list-style-type: none"> Demonstration of meeting the Professional Competencies of the Rhode Island Standards for Educational Leadership (RISEL) and the Content Competencies as prescribed by the Association of School Business Officials International (NPBEA) Bachelor’s degree from a regionall accredited instiution Doctorate, Certificate of Advanced Graduate Study OR Master's degree with not less than 36 semester hours of graduate level coursework in each of the following areas: <ul style="list-style-type: none"> School/Community Relations Curriculum Construction Organization and Administration of Schools Supervision of Instruction Supervision and Evaluation of Professional Staff Educational Research Program Evaluation School Plant Planning School Finance OR Provide evidence of meeting the competencies of the RI Standards for Educational Leadership and the Educational Leadership Constituent Council Standards in the following areas: <ul style="list-style-type: none"> Mission and Vision Teaching and Learning Organizational Systems Collaboration Personal Development and Ethics Educational Systems 	<p>Go to www.ets.org for test registration, date, and locations.</p> <p>School Superintendent Assessment (6021) with a score of 160</p>