

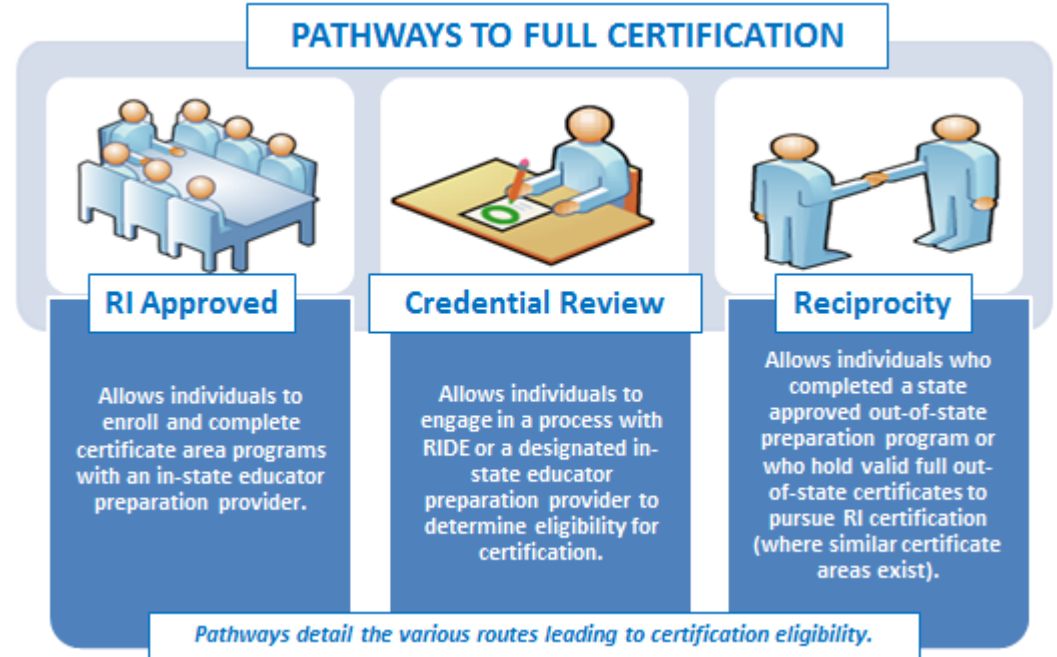


## All Grades Requirements for Full Certification

Applicants must satisfy all requirements in the following table for the certificate area(s) they are seeking<sup>1</sup>. The table includes details for each certificate area including: the specific area, valid assignment details, available pathways, specific criteria, and required assessment(s). All full teacher certificate areas require the applicant to hold a Bachelor’s degree from a regionally accredited institution.

All documentation listed within the requirements must be submitted with [application materials](#). Demonstration of completion of a certification pathway as well as demonstration of meeting all other requirements is necessary for certification.

*Note: Applicants prepared in a program where the language of instruction was not English must achieve a passing score of 64 on the Versant Pro Speaking and Writing English assessments. Additionally, dependent certificate areas are noted with an asterisk and specify the prerequisite certificate (within the criteria).*



## Certificate Areas

All Grades Adapted Physical Education Teacher*	2
All Grades Art Teacher	2
All Grades Bilingual and Dual Language Education Teacher*	3
All Grades Dance Teacher	4
All Grades Dance Teacher (RIDE Credential Review)	5
All Grades ESL Education Teacher*	6
All Grades Family and Consumer Science Teacher	6
All Grades Family and Consumer Science Teacher (RIDE Credential Review)	7
All Grades Health Teacher	8

All Grades Library Media Teacher	8
All Grades Music Teacher	9
All Grades Physical Education Teacher	10
All Grades School Nurse Teacher	10
All Grades Technology Education Teacher	11
All Grades Theatre Teacher	11
All Grades Theatre Teacher (RIDE Credential Review)	12
All Grades World Language Teacher	13
All Grades Special Education- Deaf and Hard of Hearing	14
All Grades Special Education-Deaf and Hard of Hearing (RIDE Credential Review)	15
All Grades Special Education- Visually Impaired	16
All Grades Special Education-Visually Impaired (RIDE Credential Review)	17
All Grades Special Education- Severe Intellectual Disability	18

<sup>1</sup> RI full certification demonstrates that an educator has met all RI certification requirements. RI full certification types include Initial, Professional, and Advanced certificates (all of which are multi-year certificates). RI full certification is comparable to National Association of State Directors of Teacher Education and Certification (NASDTEC) stage three or higher certificates and is recognized by other states for certificate reciprocity. RI full certification does not include preliminary certificates. Individuals pursuing their first full certificate should apply for their Initial certificate



# All Grades Requirements for Full Certification

CERTIFICATE & ASSIGNMENT	PATHWAYS & CRITERIA	ASSESSMENT
<p><b>All Grades Adapted Physical Education Teacher* (11585)</b></p> <p><i>Valid for assignment as an All Grades Adapted Physical Education teacher in grades PK - 12 in Rhode Island public schools.</i></p>	<p><b>PATHWAYS:</b></p> <ul style="list-style-type: none"> <li>▪ <a href="#">RI Approved Program</a>, <a href="#">Credential Review: CRCI</a>, and <a href="#">Reciprocity</a></li> </ul> <p><b>CERTIFICATE:</b> Hold an All Grades Physical Education Certificate</p> <p><b>CRITERIA:</b></p> <ul style="list-style-type: none"> <li>▪ Completion of 75 hours of Practicum</li> <li>▪ Demonstration of meeting the Professional Competencies of the Rhode Island Professional Teaching Standards (RIPTS) and the Content Competencies as prescribed by the Association for Sport and Physical Activity (AAHPERD)</li> </ul>	<p>N/A</p>
<p><b>All Grades Art Teacher (11501)</b></p> <p><i>Valid for assignment as an All Grades Art teacher in grades PK - 12 in Rhode Island public schools.</i></p>	<p><b>PATHWAYS:</b></p> <ul style="list-style-type: none"> <li>▪ <a href="#">RI Approved Program</a>, <a href="#">Credential Review: CRCI</a>, and <a href="#">Reciprocity</a></li> </ul> <p><b>CRITERIA:</b></p> <ul style="list-style-type: none"> <li>▪ Major or equivalent in the content area or a closely related field</li> <li>▪ Completion of a minimum of 12 weeks of Student Teaching in this area and a minimum of 60 hours Field Experience prior to Student Teaching</li> <li>▪ Demonstration of meeting the Professional Competencies of the Rhode Island Professional Teaching Standards (RIPTS) and the Content Competencies as prescribed by the National Art Education Association (NAEA)</li> </ul>	<p>Go to <a href="http://www.ets.org">www.ets.org</a> for test registration, date, and locations.</p> <p>Praxis II Principles of Learning and Teaching-Grades K-6 (5622) with a score of 160</p> <p><b>OR</b></p> <p>Praxis II Principles of Learning and Teaching-Grades 7-12 (5624) with 157</p> <p><b>AND</b></p> <p>Praxis II Art: Content Knowledge test (5134) with 158</p>



## All Grades Requirements for Full Certification

CERTIFICATE & ASSIGNMENT	PATHWAYS & CRITERIA	ASSESSMENT
<p><b>All Grades Bilingual and Dual Language Education Teacher* (11591)</b></p> <p><i>Valid for assignment as an All Grades Bilingual and Dual Language Education teacher in grades PK - 12 in Rhode Island public schools.</i></p>	<p><b>PATHWAYS:</b></p> <ul style="list-style-type: none"> <li>▪ <a href="#">Credential Review: CRCI</a> and <a href="#">Reciprocity</a></li> </ul> <p><b>CERTIFICATE:</b> Hold an All Grades Content Area Certificate</p> <p><b>CRITERIA:</b></p> <ul style="list-style-type: none"> <li>▪ Completion of 45 hours of Practicum</li> <li>▪ Demonstration of meeting the Professional Competencies of Rhode Island Professional Teaching Standards (RIPTS) and the Content Competencies as prescribed by the Teachers of English to Speakers of Other Languages (TESOL)</li> <li>▪ Demonstration of proficiency in the second language of instruction through the Language Assessment</li> </ul>	<p>Go to <a href="http://www.ets.org">www.ets.org</a> for test registration, date, and locations.</p> <p>Praxis II English to Speakers of Other Languages (5362) with a passing score of 155</p> <p><b>AND</b></p> <p>For French: the French World language (5174) with 162; For German: the German World Language (5183) with 163; For Latin: the Latin (5601) with 161; For Spanish: the Spanish World Language (5195) with 168</p> <p><b>OR</b></p> <p>For all other languages a passing score of “Advanced Low” on the Oral Proficiency Interview(OPI)</p>



## All Grades Requirements for Full Certification

CERTIFICATE & ASSIGNMENT	PATHWAYS & CRITERIA	ASSESSMENT
<p><b>All Grades Dance Teacher (11502)</b></p> <p><i>Valid for assignment as an All Grades Dance teacher in grades PK - 12 in Rhode Island public schools.</i></p>	<p><b>PATHWAYS:</b>  <a href="#">RI Approved Program</a>, <a href="#">Credential Review: RIDE</a> (see below), and <a href="#">Reciprocity</a></p> <p><b>CRITERIA:</b></p> <ul style="list-style-type: none"> <li>▪ Major or equivalent in the content area or a closely related field</li> <li>▪ Completion of a minimum of 12 weeks of Student Teaching in this area and a minimum of 60 hours Field Experience prior to Student Teaching</li> <li>▪ Demonstration of meeting the Professional Competencies of Rhode Island Professional Teaching Standards (RIPTS) and the Content Competencies as prescribed by the National Dance Education Organization (NDEO)</li> </ul>	<p>Go to <a href="http://www.ets.org">www.ets.org</a> for test registration, date, and locations.</p> <p>Praxis II Principles of Learning and Teaching-Grades K-6 (5622) with a score of 160</p> <p style="text-align: center;"><b>OR</b></p> <p>Praxis II Principles of Learning and Teaching-Grades 7-12 (5624) with a score of 157</p>



## All Grades Requirements for Full Certification

CERTIFICATE & ASSIGNMENT	PATHWAYS & CRITERIA	ASSESSMENT
<p><b><u>RIDE CREDENTIAL REVIEW</u></b>  <b>All Grades Dance Teacher (11502)</b></p> <p><i>Valid for assignment as an All Grades Dance teacher in grades PK - 12 in Rhode Island public schools.</i></p>	<p><b><u>CRITERIA:</u></b></p> <ul style="list-style-type: none"> <li>▪ Completion of a minimum of 12 weeks of Student Teaching in this area and a minimum of 60 hours Field Experience prior to Student Teaching</li> <li>▪ Demonstration of meeting the Professional Competencies of Rhode Island Professional Teaching Standards (RIPTS) and the Content Competencies as prescribed by the National Dance Education Organization (NDEO)</li> <li>▪ Not less than 18 semester hours of course work to include work in each of the following areas:               <ul style="list-style-type: none"> <li>○ Human Growth and Development</li> <li>○ Foundations of Education</li> <li>○ Methodology (to include at least one course in the Special Subjects field)</li> <li>○ Measurement and Evaluation</li> <li>○ Identification of and Service to Special Needs Students</li> <li>○ Teaching of Reading in the Content Area</li> </ul> </li> <li>▪ Not less than 24 hours of coursework to include work in each of the following areas:               <ul style="list-style-type: none"> <li>○ Types of Dance: Ballet, Ballroom, Ethnic, Folk, Jazz, Modern</li> <li>○ Dance History</li> <li>○ Dance Production/Stagecraft</li> <li>○ Choreography and Improvisation</li> <li>○ Human Anatomy</li> </ul> </li> </ul>	<p>Go to <a href="http://www.ets.org">www.ets.org</a> for test registration, date, and locations.</p> <p>Praxis II Principles of Learning and Teaching-Grades K-6 (5622) with a score of 160</p> <p style="text-align: center;"><b>OR</b></p> <p>Praxis II Principles of Learning and Teaching-Grades 7-12 (5624) with a score of 157</p>



## All Grades Requirements for Full Certification

CERTIFICATE & ASSIGNMENT	PATHWAYS & CRITERIA	ASSESSMENT
<p><b>All Grades ESL Education Teacher* (11592)</b></p> <p><i>Valid for assignment as an All Grades English as a Second Language Education Teacher in grades Pre K-12 in Rhode Island public schools.</i></p>	<p><b>PATHWAYS:</b></p> <ul style="list-style-type: none"> <li>▪ <a href="#">Credential Review: CRCI</a> and <a href="#">Reciprocity</a></li> </ul> <p><b>CERTIFICATE:</b> Hold an All Grades Content Area Certificate</p> <p><b>CRITERIA:</b></p> <ul style="list-style-type: none"> <li>▪ Completion of 45 hours of Practicum</li> <li>▪ Demonstration of meeting the Professional Competencies of Rhode Island Professional Teaching Standards (RIPTS) and the Content Competencies as prescribed by the Teachers of English to Speakers of Other Languages (TESOL)</li> </ul>	<p>Go to <a href="http://www.ets.org">www.ets.org</a> for test registration, date, and locations.</p> <p>English to Speakers of Other Languages test (5362) with a score of 155</p>
<p><b>All Grades Family and Consumer Science Teacher (11503)</b></p> <p><i>Valid for assignment as an All Grades Family and Consumer Science teacher in grades PK-12 in Rhode Island public schools.</i></p>	<p><b>PATHWAYS:</b></p> <ul style="list-style-type: none"> <li>▪ <a href="#">Credential Review: RIDE</a> (see below) and <a href="#">Reciprocity</a></li> </ul> <p><b>CRITERIA:</b></p> <ul style="list-style-type: none"> <li>▪ Major or equivalent in the content area or a closely related field</li> <li>▪ Completion of a minimum of 12 weeks of Student Teaching in this area and a minimum of 60 hours Field Experience prior to Student Teaching</li> <li>▪ Demonstration of meeting the Professional Competencies of Rhode Island Professional Teaching Standards (RIPTS) and the Content Competencies as prescribed by the American Association of Family and Consumer Sciences (AAFCS)</li> </ul>	<p>Go to <a href="http://www.ets.org">www.ets.org</a> for test registration, date, and locations.</p> <p>Praxis II Principles of Learning and Teaching-Grades K-6 (5622) with a score of 160</p> <p><b>OR</b></p> <p>Praxis II Principles of Learning and Teaching-Grades 7-12 (5624) with 157</p> <p><b>AND</b></p> <p>Praxis II Family and Consumer Sciences test (5122) with 153.</p>



## All Grades Requirements for Full Certification

CERTIFICATE & ASSIGNMENT	PATHWAYS & CRITERIA	ASSESSMENT
<p><b><u>RIDE CREDENTIAL REVIEW</u></b>  <b>All Grades Family and Consumer Science Teacher (11503)</b></p> <p><i>Valid for assignment as an All Grades Family and Consumer Science teacher in grades PK-12 in Rhode Island public schools.</i></p>	<p><b>CRITERIA:</b></p> <ul style="list-style-type: none"> <li>▪ Completion of a minimum of 12 weeks of Student Teaching in this area and a minimum of 60 hours Field Experience prior to Student Teaching</li> <li>▪ Demonstration of meeting the Professional Competencies of Rhode Island Professional Teaching Standards (RIPTS) and the Content Competencies as prescribed by the American Association of Family and Consumer Sciences (AAFCS)</li> <li>▪ Not less than 18 semester hours of course work to include work in each of the following areas:               <ul style="list-style-type: none"> <li>○ Human Growth and Development</li> <li>○ Foundations of Education</li> <li>○ Methodology (to include at least one course in the Special Subjects field)</li> <li>○ Measurement and Evaluation</li> <li>○ Identification of and Service to Special Needs Students</li> <li>○ Teaching of Reading in the Content Area</li> </ul> </li> <li>▪ Not less than 36 semester hours of coursework to include work in each of the following areas:               <ul style="list-style-type: none"> <li>○ Family Interaction</li> <li>○ Clothing and Textiles</li> <li>○ Consumer Economics</li> <li>○ Foods and Nutrition</li> <li>○ Home Management</li> <li>○ Community Relations</li> </ul> </li> </ul>	<p><b>Go to <a href="http://www.ets.org">www.ets.org</a> for test registration, date, and locations.</b></p> <p>Praxis II Principles of Learning and Teaching-Grades K-6 (5622) with a score of 160</p> <p style="text-align: center;"><b>OR</b></p> <p>Praxis II Principles of Learning and Teaching-Grades 7-12 (5624) with a score of 157</p> <p style="text-align: center;"><b>AND</b></p> <p>Praxis II Family and Consumer Sciences test (5122) with 153.</p>



## All Grades Requirements for Full Certification

CERTIFICATE & ASSIGNMENT	PATHWAYS & CRITERIA	ASSESSMENT
<p><b>All Grades Health Teacher (11504)</b></p> <p><i>Valid for assignment as an All Grades Health teacher in grades PK - 12 in Rhode Island public schools.</i></p>	<p><b>PATHWAYS:</b></p> <ul style="list-style-type: none"> <li>▪ <a href="#">RI Approved Program</a>, <a href="#">Credential Review: CRCI</a>, and <a href="#">Reciprocity</a></li> </ul> <p><b>CRITERIA:</b></p> <ul style="list-style-type: none"> <li>▪ Major or equivalent in the content area or a closely related field</li> <li>▪ Completion of a minimum of 12 weeks of Student Teaching in this area and a minimum of 60 hours Field Experience prior to Student Teaching</li> <li>▪ Demonstration of meeting the Professional Competencies of Rhode Island Professional Teaching Standards (RIPTS) and the Content Competencies as prescribed by the American Association of Health Education (AAHE)</li> </ul>	<p>Go to <a href="http://www.ets.org">www.ets.org</a> for test registration, date, and locations.</p> <p>Praxis II Principles of Learning and Teaching-Grades K-6 (5622) with a score of 160</p> <p style="text-align: center;"><b>OR</b></p> <p>Praxis II Principles of Learning and Teaching-Grades 7-12 (5624) with 157</p> <p style="text-align: center;"><b>AND</b></p> <p>Praxis II Health Education (5551) with 162</p>
<p><b>All Grades Library Media Teacher (11505)</b></p> <p><i>Valid for assignment as an All Grades Library Media teacher in grades PK - 12 in Rhode Island public schools.</i></p>	<p><b>PATHWAYS:</b></p> <ul style="list-style-type: none"> <li>▪ <a href="#">Credential Review: CRCI</a>, <a href="#">Reciprocity</a>, and <a href="#">RI Approved Program</a></li> </ul> <p><b>CRITERIA:</b></p> <ul style="list-style-type: none"> <li>▪ Major or equivalent in the content area or a closely related field</li> <li>▪ Completion of a minimum of 12 weeks of Student Teaching in this area and a minimum of 60 hours Field Experience prior to Student Teaching</li> <li>▪ Demonstration of meeting the Professional Competencies of Rhode Island Professional Teaching Standards (RIPTS) and the Content Competencies as prescribed by the American Library Association (ALA)</li> </ul>	<p>Go to <a href="http://www.ets.org">www.ets.org</a> for test registration, date, and locations.</p> <p>Praxis II Principles of Learning and Teaching-Grades K-6 (5622) with a score of 160</p> <p style="text-align: center;"><b>OR</b></p> <p>Praxis II Principles of Learning and Teaching-Grades 7-12 (5624) with 157</p> <p style="text-align: center;"><b>AND</b></p> <p>Praxis II Library Media Specialist test (5311) with 162.</p>





## All Grades Requirements for Full Certification

CERTIFICATE & ASSIGNMENT	PATHWAYS & CRITERIA	ASSESSMENT
<p><b>All Grades Music Teacher (11506)</b></p> <p><i>Valid for assignment as an All Grades Music teacher in grades PK - 12 in Rhode Island public schools.</i></p>	<p><b>PATHWAYS:</b></p> <ul style="list-style-type: none"> <li>▪ <a href="#">RI Approved Program</a>, <a href="#">Credential Review: CRCI</a>, and <a href="#">Reciprocity</a></li> </ul> <p><b>CRITERIA:</b></p> <ul style="list-style-type: none"> <li>▪ Major or equivalent in the content area or a closely related field</li> <li>▪ Completion of a minimum of 12 weeks of Student Teaching in this area and a minimum of 60 hours Field Experience prior to Student Teaching</li> <li>▪ Demonstration of meeting the Professional Competencies of Rhode Island Professional Teaching Standards (RIPTS) and the Content Competencies as prescribed by the National Association for Music Education (NAfME)</li> </ul>	<p>Go to <a href="http://www.ets.org">www.ets.org</a> for test registration, date, and locations.</p> <p>Praxis II Principles of Learning and Teaching-Grades K-6 (5622) with a score of 160</p> <p style="text-align: center;"><b>OR</b></p> <p>Praxis II Principles of Learning and Teaching-Grades 7-12 (5624) with 157</p> <p style="text-align: center;"><b>AND</b></p> <p>Praxis II Music: Content Knowledge test (5113) with 160.</p>



## All Grades Requirements for Full Certification

CERTIFICATE & ASSIGNMENT	PATHWAYS & CRITERIA	ASSESSMENT
<p><b>All Grades Physical Education Teacher (11507)</b></p> <p><i>Valid for assignment as an All Grades Physical Education teacher in grades PK - 12 in Rhode Island public schools.</i></p>	<p><b>PATHWAYS:</b></p> <ul style="list-style-type: none"> <li>▪ <a href="#">RI Approved Program</a>, <a href="#">Credential Review: CRCI</a>, and <a href="#">Reciprocity</a></li> </ul> <p><b>CRITERIA:</b></p> <ul style="list-style-type: none"> <li>▪ Major or equivalent in the content area or a closely related field</li> <li>▪ Completion of a minimum of 12 weeks of Student Teaching in this area and a minimum of 60 hours Field Experience prior to Student Teaching</li> <li>▪ Demonstration of meeting the Professional Competencies of Rhode Island Professional Teaching Standards (RIPTS) and the Content Competencies as prescribed by the National Association for Sport and Physical Education (NASPE)</li> </ul>	<p>Go to <a href="http://www.ets.org">www.ets.org</a> for test registration, date, and locations.</p> <p>Praxis II Principles of Learning and Teaching-Grades K-6 (5622) with a score of 160</p> <p><b>OR</b></p> <p>Praxis II Principles of Learning and Teaching-Grades 7-12 (5624) with 157</p> <p><b>AND</b></p> <p>Praxis II Physical Education: content Knowledge test (5091) with 154</p>
<p><b>All Grades School Nurse Teacher (11508)</b></p> <p><i>Valid for assignment as an All Grades School Nurse Teacher and as an All Grades Health teacher in grades PK - 12 in Rhode Island public schools.</i></p>	<p><b>PATHWAYS:</b></p> <ul style="list-style-type: none"> <li>▪ <a href="#">Credential Review: CRCI</a>, and <a href="#">Reciprocity</a></li> </ul> <p><b>CRITERIA:</b></p> <ul style="list-style-type: none"> <li>▪ Licensed as a professional nurse by the RI Department of Health</li> <li>▪ 3 years of Documented Experience as a Professional Nurse</li> <li>▪ Completion of a minimum of 12 weeks of Student Teaching in this area and a minimum of 60 hours Field Experience prior to Student Teaching</li> <li>▪ Demonstration of meeting the Professional Competencies of Rhode Island Professional Teaching Standards (RIPTS) and the Content Competencies as prescribed by the American Nurses Association (ANA)</li> </ul>	<p>Go to <a href="http://www.ets.org">www.ets.org</a> for test registration, date, and locations.</p> <p>Praxis II Principles of Learning and Teaching-Grades K-6 (5622) with a score of 160</p> <p><b>OR</b></p> <p>Praxis II Principles of Learning and Teaching-Grades 7-12 (5624) with 157</p>



## All Grades Requirements for Full Certification

CERTIFICATE & ASSIGNMENT	PATHWAYS & CRITERIA	ASSESSMENT
<p><b>All Grades Technology Education Teacher (11509)</b></p> <p><i>Valid for assignment as an All Grades Technology Education teacher in grades PK - 12 in Rhode Island public schools.</i></p>	<p><b>PATHWAYS:</b></p> <ul style="list-style-type: none"> <li>▪ <a href="#">RI Approved Program</a>, <a href="#">Credential Review: CRCI</a>, and <a href="#">Reciprocity</a></li> </ul> <p><b>CRITERIA:</b></p> <ul style="list-style-type: none"> <li>▪ Major or equivalent in the content area or a closely related field</li> <li>▪ Completion of a minimum of 12 weeks of Student Teaching in this area and a minimum of 60 hours Field Experience prior to Student Teaching</li> <li>▪ Demonstration of meeting the Professional Competencies of Rhode Island Professional Teaching Standards (RIPTS) and the Content Competencies as prescribed by the International Technology and Engineering Educators Association (ITEEA)</li> </ul>	<p>Go to <a href="http://www.ets.org">www.ets.org</a> for test registration, date, and locations.</p> <p>Praxis II Principles of Learning and Teaching-Grades K-6 (5622) with a score of 160</p> <p style="text-align: center;"><b>OR</b></p> <p>Praxis II Principles of Learning and Teaching-Grades 7-12 (5624) with 157</p> <p style="text-align: center;"><b>AND</b></p> <p>Praxis II Techonlogy Education test (5051) with 166.</p>
<p><b>All Grades Theatre Teacher (11510)</b></p> <p><i>Valid for assignment as an All Grades Theatre teacher in grades PK - 12 in Rhode Island public schools.</i></p>	<p><b>PATHWAYS:</b></p> <ul style="list-style-type: none"> <li>▪ <a href="#">Credential Review: RIDE</a> (see below) and <a href="#">Reciprocity</a></li> </ul> <p><b>CRITERIA:</b></p> <ul style="list-style-type: none"> <li>▪ Major or equivalent in the content area or a closely related field</li> <li>▪ Completion of a minimum of 12 weeks of Student Teaching in this area and a minimum of 60 hours Field Experience prior to Student Teaching</li> <li>▪ Demonstration of meeting the Professional Competencies of Rhode Island Professional Teaching Standards (RIPTS) and the Content Competencies as prescribed by the Educational Theatre Association (ETA)</li> </ul>	<p>Go to <a href="http://www.ets.org">www.ets.org</a> for test registration, date, and locations.</p> <p>Praxis II Principles of Learning and Teaching-Grades K-6 (5622) with a score of 160</p> <p style="text-align: center;"><b>OR</b></p> <p>Praxis II Principles of Learning and Teaching-Grades 7-12 (5624) with 157</p> <p style="text-align: center;"><b>AND</b></p> <p>Praxis II Theatre test (5641) with 159</p>



## All Grades Requirements for Full Certification

CERTIFICATE & ASSIGNMENT	PATHWAYS & CRITERIA	ASSESSMENT
<p><b><u>RIDE CREDENTIAL REVIEW</u></b>  <b>All Grades Theatre Teacher (11510)</b></p> <p><i>Valid for assignment as an All Grades Theatre teacher in grades PK - 12 in Rhode Island public schools.</i></p>	<p><b><u>CRITERIA:</u></b></p> <ul style="list-style-type: none"> <li>▪ Completion of a minimum of 12 weeks of Student Teaching in this area and a minimum of 60 hours Field Experience prior to Student Teaching</li> <li>▪ Demonstration of meeting the Professional Competencies of Rhode Island Professional Teaching Standards (RIPTS) and the Content Competencies as prescribed by the Educational Theatre Association (ETA)</li> <li>▪ Not less than 18 semester hours of course work to include work in each of the following areas:               <ul style="list-style-type: none"> <li>○ Human Growth and Development</li> <li>○ Foundations of Education</li> <li>○ Methodology (to include at least one course in the Special Subjects field)</li> <li>○ Measurement and Evaluation</li> <li>○ Identification of and Service to Special Needs Students</li> <li>○ Teaching of Reading in the Content Area</li> </ul> </li> <li>▪ Not less than 24 semester hours of coursework to include work in each of the following areas:               <ul style="list-style-type: none"> <li>○ History of the Theatre</li> <li>○ Theatrical Production</li> <li>○ Basic Acting Skills and Techniques</li> <li>○ Technical Aspects of Theatre (such as scenery, lights, makeup, sound, properties, costume, special effects)</li> <li>○ Creative Drama or Children’s Theatre</li> </ul> </li> </ul>	<p><b>Go to <a href="http://www.ets.org">www.ets.org</a> for test registration, date, and locations.</b></p> <p>Praxis II Principles of Learning and Teaching- Grades K-6 (5622) with a score of 160</p> <p style="text-align: center;"><b>OR</b></p> <p>Praxis II Principles of Learning and Teaching- Grades 7-12 (5624) with a score of 157</p> <p style="text-align: center;"><b>AND</b></p> <p>Praxis II Theatre test (5641) with a score of 159</p>



## All Grades Requirements for Full Certification

CERTIFICATE & ASSIGNMENT	PATHWAYS & CRITERIA	ASSESSMENT
<p><b>All Grades World Language Teacher (11512)</b></p> <p><i>Valid for assignment as an All Grades World Language teacher in a specific language in Grades PK-12 in Rhode Island Public Schools.</i></p>	<p><b>PATHWAYS:</b></p> <ul style="list-style-type: none"> <li>▪ <a href="#">RI Approved Program</a>, <a href="#">Credential Review: CRCI</a>, and <a href="#">Reciprocity</a></li> </ul> <p><b>CRITERIA:</b></p> <ul style="list-style-type: none"> <li>▪ Major or equivalent in the content area or a closely related field</li> <li>▪ Completion of a minimum of 12 weeks of Student Teaching in this area and a minimum of 60 hours Field Experience prior to Student Teaching</li> <li>▪ Demonstration of meeting the Professional Competencies of Rhode Island Professional Teaching Standards (RIPTS) and the Content Competencies as prescribed by the American Council for the Teaching of Foreign Languages (ACTFL)</li> <li>▪ Certified classical or foreign language teachers, having earned initial certification with 30 credits, are entitled to additional language certification with 24 hours of language credit.</li> </ul>	<p>Go to <a href="http://www.ets.org">www.ets.org</a> for test registration, date, and locations.</p> <p>Praxis II Principles of Learning and Teaching-Grades K-6 (5622) with a score of 160</p> <p><b>OR</b></p> <p>Praxis II Principles of Learning and Teaching-Grades 7-12 (5624) with 157</p> <p><b>AND</b></p> <p>For French: the French World language (5174) with 162; For German: the German World Language (5183) with 163; For Latin: the Latin (5601) with 161; For Spanish: the Spanish World Language (5195) with 168</p> <p><b>OR</b></p> <p>For all other languages a passing score of “Advanced Low” on the Oral Proficiency Interview(OPI)</p>



## All Grades Requirements for Full Certification

CERTIFICATE & ASSIGNMENT	PATHWAYS & CRITERIA	ASSESSMENT
<p><b>All Grades Special Education- Deaf and Hard of Hearing (11582)</b></p> <p><i>Valid for assignment as an All Grades Special Education Deaf and Hard of Hearing teacher in grades PK - 12 in Rhode Island public schools.</i></p>	<p><b>PATHWAYS:</b></p> <ul style="list-style-type: none"> <li>▪ <a href="#">Reciprocity</a> and <a href="#">Credential Review: RIDE</a> (see below)</li> </ul> <p><b>CERTIFICATE:</b> Hold an Early Childhood, Elementary, Middle Grades Content or Secondary Content Area Certificate</p> <p><b>CRITERIA:</b></p> <ul style="list-style-type: none"> <li>▪ Completion of a minimum of 12 weeks of Student Teaching in this area and a minimum of 60 hours Field Experience prior to Student Teaching</li> <li>▪ Demonstration of meeting the Professional Competencies of the Rhode Island Professional Teaching Standards (RIPTS)</li> <li>▪ Demonstration of meeting the Content Competencies as prescribed by the Council for Exceptional Children (CEC)</li> <li>▪ Demonstrate competency in American Sign Language</li> </ul>	<p>Go to <a href="http://www.ets.org">www.ets.org</a> for test registration, date, and locations.</p> <p>Praxis II Special Education OF Deaf and Hard of Hearing Students test (5272) with a score of 160</p> <p><b>AND</b></p> <p>American Sign Language Proficiency Interview (ASLPI) (0634) with a score of 170.</p>



## All Grades Requirements for Full Certification

CERTIFICATE & ASSIGNMENT	PATHWAYS & CRITERIA	ASSESSMENT
<p><b><u>RIDE CREDENTIAL REVIEW</u></b>  <b>All Grades Special Education- Deaf and Hard of Hearing (11582)</b></p> <p><i>Valid for assignment as an All Grades Special Education Deaf and Hard of Hearing teacher in grades PK - 12 in Rhode Island public schools.</i></p>	<p><b>CRITERIA:</b></p> <ul style="list-style-type: none"> <li>▪ Completion of a minimum of 12 weeks of Student Teaching in this area and a minimum of 60 hours Field Experience prior to Student Teaching</li> <li>▪ Demonstration of meeting the Professional Competencies of the Rhode Island Professional Teaching Standards (RIPTS) and the Content Competencies as prescribed by the Council for Exceptional Children (CEC)</li> <li>▪ Not less than 24 semester hours of course work to include work in each of the following areas:               <ul style="list-style-type: none"> <li>○ Introduction to education of students who are deaf/hard of hearing</li> <li>○ Psychology of students who are deaf/hard of hearing</li> <li>○ Speech Science and Audiology</li> <li>○ Language of students who are deaf/hard of hearing</li> <li>○ Communication for students who are deaf/hard of hearing</li> <li>○ Curriculum and Methods for students who are deaf/hard of hearing</li> <li>○ Behavior Management</li> </ul> </li> <li>▪ Demonstrated competency in American Sign Language</li> </ul>	<p><b>Go to <a href="http://www.ets.org">www.ets.org</a> for test registration, date, and locations.</b></p> <p>Praxis II Special Education OF Deaf and Hard of Hearing Students test (5272) with a score of 160  <b>AND</b>          American Sign Language Proficiency Interview (ASLPI) (0634)with a score of 170.</p>



## All Grades Requirements for Full Certification

CERTIFICATE & ASSIGNMENT	PATHWAYS & CRITERIA	ASSESSMENT
<p><b>All Grades Special Education- Visually Impaired (11583)</b></p> <p><i>Valid for assignment as an All Grades Special Education Visually Impaired teacher in grades PK - 12 in Rhode Island public schools.</i></p>	<p><b>PATHWAYS:</b></p> <ul style="list-style-type: none"> <li>▪ <a href="#">Credential Review: RIDE</a> (see below) and <a href="#">Reciprocity</a></li> </ul> <p><b>CERTIFICATE:</b> Hold an Early Childhood, Elementary, Middle Grades Content or Secondary Content Area Certificate</p> <p><b>CRITERIA:</b></p> <ul style="list-style-type: none"> <li>▪ Completion of a minimum of 12 weeks of Student Teaching in this area and a minimum of 60 hours Field Experience prior to Student Teaching</li> <li>▪ Demonstration of meeting the Professional Competencies of the Rhode Island Professional Teaching Standards (RIPTS)</li> <li>▪ Demonstration of meeting the Content Competencies as prescribed by the Council for Exceptional Children (CEC)</li> <li>▪ Demonstrate competency in reading and writing Braille</li> </ul>	<p>Go to <a href="http://www.ets.org">www.ets.org</a> for test registration, date, and locations.</p> <p>Praxis II Special Education Teaching with Visual Impairments test (5282) with a score of 163  <b>AND</b>            Braille Proficiency (0633) with a score of 169.</p>





## All Grades Requirements for Full Certification

CERTIFICATE & ASSIGNMENT	PATHWAYS & CRITERIA	ASSESSMENT
<p><b><u>RIDE CREDENTIAL REVIEW</u></b>  <b>All Grades Special Education- Visually Impaired (11583)</b></p> <p><i>Valid for assignment as an All Grades Special Education Visually Impaired teacher in grades PK - 12 in Rhode Island public schools.</i></p>	<p><b>CRITERIA:</b></p> <ul style="list-style-type: none"> <li>▪ Completion of a minimum of 12 weeks of Student Teaching in this area and a minimum of 60 hours Field Experience prior to Student Teaching</li> <li>▪ Demonstration of meeting the Professional Competencies of the Rhode Island Professional Teaching Standards (RIPTS) and the Content Competencies as prescribed by the Council for Exceptional Children (CEC)</li> <li>▪ Not less than 24 semester hours of course work to include work in each of the following areas:               <ul style="list-style-type: none"> <li>○ Introduction to education of students who are blind/partially sighted</li> <li>○ Psychology of students who are blind/partially sighted</li> <li>○ Anatomy and Physiology of the Human Eye</li> <li>○ Assessment for students who are blind/partially sighted</li> <li>○ Fundamentals of Reading and Writing Braille</li> <li>○ Foundations of Orientation and Mobility</li> <li>○ Techniques of Working with Severe/Multi-Disabled</li> <li>○ Behavior Management</li> </ul> </li> <li>▪ Demonstrated competency in reading and writing Braille</li> </ul>	<p><b>Go to <a href="http://www.ets.org">www.ets.org</a> for test registration, date, and locations.</b></p> <p>Praxis II Special Education Teaching with Visual Impairments test (5282) with a score of 163  <b>AND</b>          Braille Proficiency (0633) with a score of 169.</p>



## All Grades Requirements for Full Certification

CERTIFICATE & ASSIGNMENT	PATHWAYS & CRITERIA	ASSESSMENT
<p><b>All Grades Special Education- Severe Intellectual Disability (11584)</b></p> <p><i>Valid for assignment as an All Grades Special Education Severe Intellectual Disability teacher in grades PK - 12 in Rhode Island public schools.</i></p>	<p><b>PATHWAYS:</b></p> <ul style="list-style-type: none"> <li>▪ <a href="#">Credential Review: CRCI</a> and <a href="#">Reciprocity</a></li> </ul> <p><b>CERTIFICATE:</b> Rhode Island Early Childhood, Elementary, or Secondary Content Area Certificate</p> <p><b>CRITERIA:</b></p> <ul style="list-style-type: none"> <li>▪ Completion of a minimum of 12 weeks of Student Teaching in this area and a minimum of 60 hours Field Experience prior to Student Teaching</li> <li>▪ Demonstration of meeting the Professional Competencies of the Rhode Island Professional Teaching Standards (RIPTS)</li> <li>▪ Demonstration of meeting the Content Competencies as prescribed by the Council of Exceptional Children (CEC)</li> </ul>	<p>Go to <a href="http://www.ets.org">www.ets.org</a> for test registration, date, and locations.</p> <p>Praxis II Special Education: Core Knowledge and Severe to Profound Applications test (5545) with a score of 164</p>