

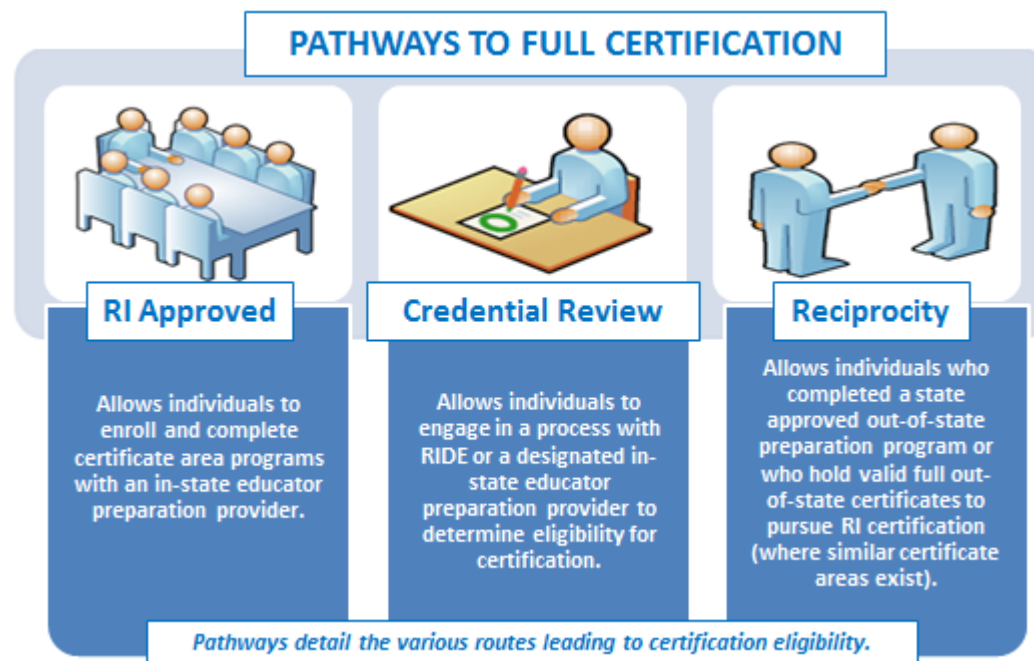


Early Childhood Requirements for Full Certification

Applicants must satisfy all requirements in the following table for the certificate area(s) they are seeking¹. The table includes details for each certificate area including: the specific area, valid assignment details, available pathways, specific criteria, and required assessment(s). All full teacher certificate areas require the applicant to hold a Bachelor's degree from a regionally accredited institution.

All documentation listed within the requirements must be submitted with [application materials](#). Demonstration of completion of a certification pathway as well as demonstration of meeting all other requirements is necessary for certification.

Note: Applicants prepared in a program where the language of instruction was not English must achieve a passing score of 64 on the Versant Pro Speaking and Writing English assessments. Additionally, dependent certificate areas are noted with an asterisk and specify the prerequisite certificate (within the criteria).



Certificate Areas

Early Childhood Education Teacher	2
Early Childhood Special Education Teacher*	3
Early Childhood Bilingual and Dual Language Education Teacher*	4
Early Childhood ESL Education Teacher *	5

¹ RI full certification demonstrates that an educator has met all RI certification requirements. RI full certification types include Initial, Professional, and Advanced certificates (all of which are multi-year certificates). RI full certification is comparable to National Association of State Directors of Teacher Education and Certification (NASDTEC) stage three or higher certificates and is recognized by other states for certificate reciprocity. RI full certification does not include preliminary certificates. Individuals pursuing their first full certificate should apply for their Initial certificate.



Early Childhood Requirements for Full Certification

CERTIFICATE & ASSIGNMENT	PATHWAY & CRITERIA	ASSESSMENT
<p>Early Childhood Education Teacher (11101)</p> <p><i>Valid for assignment as an Early Childhood Education teacher in grades PK - 2 in RI public schools.</i></p>	<p><u>PATHWAYS:</u></p> <ul style="list-style-type: none"> ▪ RI Approved Program, Credential Review: CRCL, and Reciprocity <p><u>CRITERIA:</u></p> <ul style="list-style-type: none"> ▪ Completion of a minimum of 12 weeks of student teaching in this area and a minimum of 60 hours field experience prior to student teaching ▪ Demonstration of meeting the Professional Competencies of the RI Professional Teaching Standards (RIPTS) and the Content Competencies as prescribed by the National Association for the Education of Young Children (NAEYC) 	<p>Go to www.ets.org for test registration, date, and locations.</p> <p>Praxis II Education of Young Children (5024) with a score of 160.</p> <p>AND</p> <p>Praxis II Early Childhood Education (5025) with a score of 156.</p> <p>OR</p> <p>Principles of Learning and Teaching K-6 (5622) with 160</p> <p>AND</p> <p>Passing scores on the Elementary Multiple Subjects Test (5001) which consists of: the Reading and Language Arts-subtest test (5002) with a score of 157, the Mathematics - subtest test (5003) with 157, the Social Science- subtest test (5004) with 155, the Science-subtest test (5005) with 159.</p>



Early Childhood Requirements for Full Certification

CERTIFICATE & ASSIGNMENT	PATHWAY & CRITERIA	ASSESSMENT
<p>Early Childhood Special Education Teacher* (11181)</p> <p><i>Valid for assignment as an Early Childhood Special Education teacher for Birth - Grade 2 in RI public schools.</i></p>	<p>PATHWAYS:</p> <ul style="list-style-type: none"> ▪ RI Approved Program, Credential Review: CRCI, and Reciprocity <p>CERTIFICATE: Hold an Early Childhood Education Certificate (11101)</p> <p>CRITERIA:</p> <ul style="list-style-type: none"> ▪ Completion of a minimum of 12 weeks of student teaching in this area and a minimum of 60 hours Field experience prior to student teaching ▪ Demonstration of meeting the Professional Competencies of the RI Professional Teaching Standards (RIPTS) and the Content Competencies as prescribed by the Council for Exceptional Children (CEC) 	<p>Go to www.ets.org for test registration, date, and locations.</p> <p>Praxis II Special Education: Preschool/Early Childhood (5691) with a score of 159.</p>



Early Childhood Requirements for Full Certification

CERTIFICATE & ASSIGNMENT	PATHWAY & CRITERIA	ASSESSMENT
<p>Early Childhood Bilingual and Dual Language Education Teacher* (11191)</p> <p><i>Valid for assignment as an Early Childhood Bilingual and Dual Language Education teacher in grades PK - 2 in RI public schools.</i></p>	<p>PATHWAYS:</p> <ul style="list-style-type: none"> ▪ Credential Review: CRCI and Reciprocity <p>CERTIFICATE: Hold an Early Childhood Education Certificate (11101)</p> <p>CRITERIA:</p> <ul style="list-style-type: none"> ▪ Completion of 45 hours of practicum ▪ Demonstration of meeting the Professional Competencies of RI Professional Teaching Standards (RIPTS) and the Content Competencies as prescribed by the Teachers of English to Speakers of Other Languages (TESOL) ▪ Demonstration of proficiency in the second language of instruction through the Language Assessments 	<p>Go to www.ets.org for test registration, date, and locations.</p> <p>Praxis II English to Speakers of Other Languages (5362) with a passing score of 155.</p> <p>AND</p> <p>For French: the French World language (5174) with 162; For German: the German World Language (5183) with 163; For Latin: the Latin (5601) with 161; For Spanish: the Spanish World Language (5195) with 168</p> <p>OR</p> <p>For all other languages a passing score of “Advanced Low” on the Oral Proficiency Interview(OPI)</p>



Early Childhood Requirements for Full Certification

CERTIFICATE & ASSIGNMENT	PATHWAY & CRITERIA	ASSESSMENT
<p>Early Childhood ESL Education Teacher *(11192)</p> <p><i>Valid for assignment as an Early Childhood English as a Second Language Education teacher in grades PK - 2 in RI public schools.</i></p>	<p>PATHWAYS:</p> <ul style="list-style-type: none"> ▪ Credential Review: CRCI and Reciprocity <p>CERTIFICATE: Hold an Early Childhood Education Certificate (11101)</p> <p>CRITERIA:</p> <ul style="list-style-type: none"> ▪ Completion of 45 hours of practicum ▪ Demonstration of meeting the Professional Competencies of RI Professional Teaching Standards (RIPTS) and the Content Competencies as prescribed by the Teachers of English to Speakers of Other Languages (TESOL) 	<p>Go to www.ets.org for test registration, date, and locations.</p> <p>Praxis II English to Speakers of Other Languages (5362) with a passing score of 155.</p>