

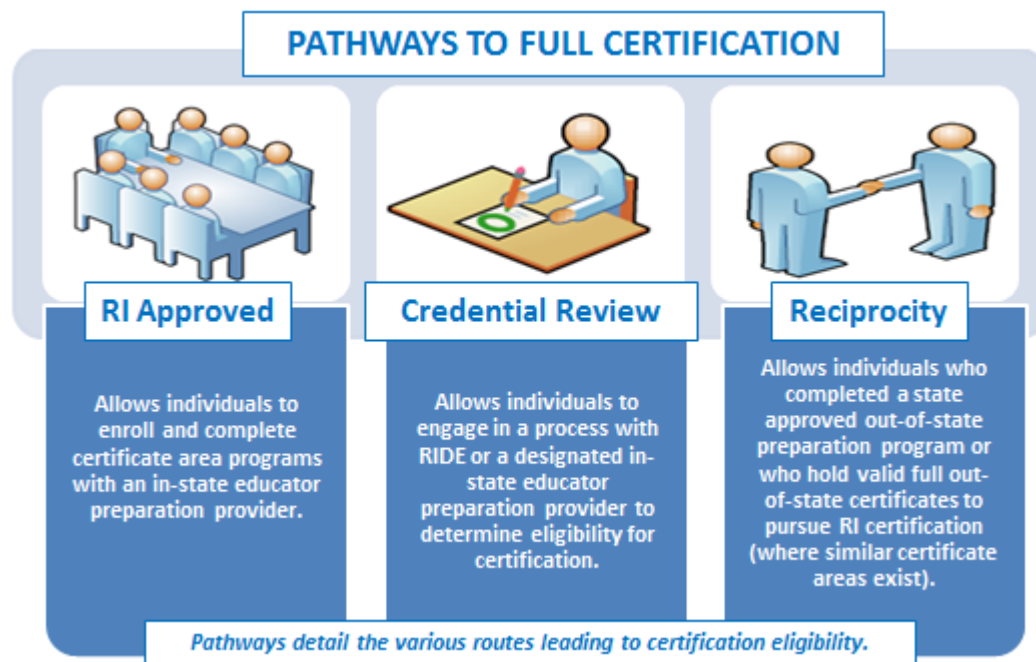


Middle Grades Requirements for Full Certification

Applicants must satisfy all requirements in the following table for the certificate area(s) they are seeking¹. The table includes details for each certificate area including: the specific area, valid assignment details, available pathways, specific criteria, and required assessment(s). All full teacher certificate areas require the applicant to hold a Bachelor's degree from a regionally accredited institution.

All documentation listed within the requirements must be submitted with [application materials](#). Demonstration of completion of a certification pathway as well as demonstration of meeting all other requirements is necessary for certification.

Note: Applicants prepared in a program where the language of instruction was not English must achieve a passing score of 64 on the Versant Pro Speaking and Writing English assessments. Additionally, dependent certificate areas are noted with an asterisk and specify the prerequisite certificate (within the criteria).



Certificate Areas

Middle Grades English Teacher.....	2
Middle Grades English Teacher Elementary Extension*	3
Middle Grades English Teacher Secondary Extension*	3
Middle Grades Mathematics Teacher.....	4
Middle Grades Mathematics Teacher Elementary Extension *	4
Middle Grades Mathematics Teacher Secondary Extension *	5
Middle Grades Science Teacher.....	5
Middle Grades Science Teacher Elementary Extension *	6
Middle Grades Science Teacher Secondary Extension *	6

Middle Grades Social Studies Teacher	7
Middle Grades Social Studies Teacher Elementary Extension*	7
Middle Grades Social Studies Teacher Secondary Extension*	8
Middle Grades Special Education Teacher*	9
Middle Grades Bilingual Dual Language Teacher*	10
Middle Grades Bilingual Dual Language Teacher* (RIDE Credential Review)	11
Middle Grades English as a Second Language Teacher*	12

¹ RI full certification demonstrates that an educator has met all RI certification requirements. RI full certification types include Initial, Professional, and Advanced certificates (all of which are multi-year certificates). RI full certification is comparable to National Association of State Directors of Teacher Education and Certification (NASDTEC) stage three or higher certificates and is recognized by other states for certificate reciprocity. RI full certification does not include preliminary certificates. Individuals pursuing their first full certificate should apply for their Initial certificate.



Middle Grades Requirements for Full Certification

CERTIFICATE & ASSIGNMENT	PATHWAYS & CRITERIA	ASSESSMENT
<p>Middle Grades English Teacher (11301)</p> <p><i>Valid for assignment as a Middle Grades English teacher in grades 5 - 8 in RI public schools.</i></p>	<p><u>PATHWAYS:</u></p> <ul style="list-style-type: none"> ▪ Reciprocity <p><u>CRITERIA:</u></p> <ul style="list-style-type: none"> ▪ Major or equivalent in the content area or in a closely related field ▪ Completion of a minimum of 12 weeks of student teaching in this area and a minimum of 60 hours Field experience prior to student teaching ▪ Demonstration of meeting the Professional Competencies of the RI Professional Teaching Standards (RIPTS), the Content Competencies as prescribed by the National Council of Teachers of English (NCTE), and the pedagogical competencies of the Association for Middle Level Education (AMLE) 	<p>Go to www.ets.org for test registration, date, and locations.</p> <p>Middle School English Language Arts (5047) with a score of 164</p> <p style="text-align: center;">OR</p> <p>English Language, Literature, Composition: Content and Analysis (5039) with a score of 168</p> <p style="text-align: center;">AND</p> <p>Principles of Learning & Teaching 5-9 (5623) with a score of 160</p>



Middle Grades Requirements for Full Certification

CERTIFICATE & ASSIGNMENT	PATHWAYS & CRITERIA	ASSESSMENT
<p>Middle Grades English Teacher Elementary Extension* (11331)</p> <p><i>Valid for assignment as a Middle Grades English teacher in grades 5 - 8 in RI public schools.</i></p>	<p>PATHWAYS:</p> <ul style="list-style-type: none"> ▪ RI Approved Program, Credential Review: CRCI, and Reciprocity <p>CERTIFICATE: Hold an Elementary Education Teacher (11201)</p> <p>CRITERIA:</p> <ul style="list-style-type: none"> ▪ 21 semester hours of coursework in English ▪ Completion of a minimum of 45 hours of practicum ▪ Demonstration of meeting the Professional Competencies of the RI Professional Teaching Standards (RIPTS), the Content Competencies as prescribed by the National Council of Teachers of English (NCTE), and the pedagogical competencies of the Association for Middle Level Education (AMLE) 	<p>Go to www.ets.org for test registration, date, and locations.</p> <p>Middle School English Language Arts (5047) with a score of 164 OR English Language, Literature, Composition: Content and Analysis (5039) with a score of 168</p>
<p>Middle Grades English Teacher Secondary Extension* (11341)</p> <p><i>Valid for assignment as a Middle Grades English teacher in grades 5 - 8 in RI public schools.</i></p>	<p>PATHWAYS:</p> <ul style="list-style-type: none"> ▪ RI Approved Program, Credential Review: CRCI, and Reciprocity <p>CERTIFICATE: Hold a Secondary Grades English Teacher (11406)</p> <p>CRITERIA:</p> <ul style="list-style-type: none"> ▪ Completion of a minimum of 45 hours of practicum ▪ Demonstration of meeting the Professional Competencies of the RI Professional Teaching Standards (RIPTS), the Content Competencies as prescribed by the National Council of Teachers of English (NCTE), and the pedagogical competencies of the Association for Middle Level Education (AMLE) 	<p>Go to www.ets.org for test registration, date, and locations.</p> <p>Middle School English Language Arts (5047) with a score of 164 OR English Language, Literature, Composition: Content and Analysis (5039) with a score of 168</p>



Middle Grades Requirements for Full Certification

CERTIFICATE & ASSIGNMENT	PATHWAYS & CRITERIA	ASSESSMENT
<p>Middle Grades Mathematics Teacher (11302) <i>Valid for assignment as a Middle Grades Mathematics teacher in grades 5 - 8 in RI public schools.</i></p>	<p>PATHWAYS:</p> <ul style="list-style-type: none"> ▪ Reciprocity <p>CRITERIA:</p> <ul style="list-style-type: none"> ▪ Major or equivalent in the content area or in a closely related field ▪ Completion of a minimum of 12 weeks of student teaching in this area and a minimum of 60 hours field experience prior to student teaching ▪ Demonstration of meeting the Professional Competencies of the RI Professional Teaching Standards (RIPTS), the Content Competencies as prescribed by the National Council for Teachers of Mathematics (NCTM), and the pedagogical competencies of the Association for Middle Level Education (AMLE) 	<p>Go to www.ets.org for test registration, date, and locations.</p> <p>Middle School Mathematics (5169) with a score of 165 OR Mathematics: Content Knowledge (5161) with a score of 160 AND Principles of Learning & Teaching 5-9 (5623) with a score of 160</p>
<p>Middle Grades Mathematics Teacher Elementary Extension * (11332) <i>Valid for assignment as a Middle Grades Mathematics teacher in grades 5 - 8 in RI public schools.</i></p>	<p>PATHWAYS:</p> <ul style="list-style-type: none"> ▪ RI Approved Program, Credential Review: CRCL, and Reciprocity <p>CERTIFICATE: Hold an Elementary Education Teacher (11201)</p> <p>CRITERIA:</p> <ul style="list-style-type: none"> ▪ 21 semester hours in Math, including calculus ▪ Completion of a minimum of 45 hours of practicum in this certification area ▪ Demonstration of meeting the Content Competencies as prescribed by the National Council for Teachers of Mathematics (NCTM) with a minimum of 21 semester hours of coursework in mathematics; and the pedagogical competencies of the Association for Middle Level Education (AMLE). 	<p>Go to www.ets.org for test registration, date, and locations.</p> <p>Middle School Mathematics (5169) with a score of 165 OR Mathematics: Content Knowledge (5161) with a score of 160</p>



Middle Grades Requirements for Full Certification

CERTIFICATE & ASSIGNMENT	PATHWAYS & CRITERIA	ASSESSMENT
<p>Middle Grades Mathematics Teacher Secondary Extension * (11342)</p> <p><i>Valid for assignment as a Middle Grades Mathematics teacher in grades 5 - 8 in RI public schools.</i></p>	<p>PATHWAYS:</p> <ul style="list-style-type: none"> ▪ RI Approved Program, Credential Review: CRCI, and Reciprocity <p>CERTIFICATE: Hold a Secondary Grades Mathematics Teacher (11408)</p> <p>CRITERIA:</p> <ul style="list-style-type: none"> ▪ Completion of a minimum of 45 hours of practicum in this certification area ▪ Demonstration of meeting the pedagogical competencies of the Association for Middle Level Education (AMLE). 	<p>Go to www.ets.org for test registration, date, and locations.</p> <p>Middle School Mathematics (5169) with a score of 165 OR Mathematics: Content Knowledge (5161) with a score of 160</p>
<p>Middle Grades Science Teacher (11303)</p> <p><i>Valid for assignment as a Middle Grades Science teacher in grades 5 - 8 in RI public schools.</i></p>	<p>PATHWAYS:</p> <ul style="list-style-type: none"> • Reciprocity <p>CRITERIA:</p> <ul style="list-style-type: none"> ▪ Major or Equivalent in the content area or in a closely related field ▪ Completion of a minimum of 12 weeks of student teaching in this area and a minimum of 60 hours Field experience prior to student teaching ▪ Demonstration of meeting the Professional Competencies of the RI Professional Teaching Standards (RIPTS), the Content Competencies as prescribed by the National Science Teachers Association (NSTA) and the pedagogical competencies of the Association for Middle Level Education (AMLE). 	<p>Go to www.ets.org for test registration, date, and locations.</p> <p>Middle School Science (5440) with a score of 150 OR General Science: Content Knowledge (5435) with a score of 153 AND Principles of Learning & Teaching 5-9 (5623) with a score of 160</p>



Middle Grades Requirements for Full Certification

CERTIFICATE & ASSIGNMENT	PATHWAYS & CRITERIA	ASSESSMENT
<p>Middle Grades Science Teacher Elementary Extension * (11333)</p> <p><i>Valid for assignment as a Middle Grades Science teacher in grades 5 - 8 in RI public schools.</i></p>	<p>PATHWAYS:</p> <ul style="list-style-type: none"> ▪ RI Approved Program, Credential Review: CRCI, and Reciprocity <p>CERTIFICATE: Hold an Elementary Education Teacher (11201)</p> <p>CRITERIA:</p> <ul style="list-style-type: none"> ▪ 21 semester hours in Science with coursework in three science areas ▪ Completion of a minimum of 45 hours of practicum ▪ Demonstration of meeting the Professional Competencies of the RI Professional Teaching Standards (RIPTS), the Content Competencies as prescribed by the National Science Teachers Association (NSTA) and the pedagogical competencies of the Association for Middle Level Education (AMLE). 	<p>Go to www.ets.org for test registration, date, and locations.</p> <p>Middle School Science (5440) with a score of 150 OR General Science: Content Knowledge (5435) with a score of 153</p>
<p>Middle Grades Science Teacher Secondary Extension * (11343)</p> <p><i>Valid for assignment as a Middle Grades Science teacher in grades 5 - 8 in RI public schools.</i></p>	<p>PATHWAYS:</p> <ul style="list-style-type: none"> ▪ RI Approved Program, Credential Review: CRCI, and Reciprocity <p>CERTIFICATE: Hold any Secondary Grades Science Certificate</p> <p>CRITERIA</p> <ul style="list-style-type: none"> ▪ Completion of a minimum of 45 hours of practicum ▪ Demonstration of meeting the Professional Competencies of the RI Professional Teaching Standards (RIPTS), the Content Competencies as prescribed by the National Science Teachers Association (NSTA) and the pedagogical competencies of the Association for Middle Level Education (AMLE). 	<p>Go to www.ets.org for test registration, date, and locations.</p> <p>Middle School Science (5440) with a score of 150 OR General Science: Content Knowledge (5435) with a score of 153</p>



Middle Grades Requirements for Full Certification

CERTIFICATE & ASSIGNMENT	PATHWAYS & CRITERIA	ASSESSMENT
<p>Middle Grades Social Studies Teacher (11304)</p> <p><i>Valid for assignment as a Middle Grades Social Studies teacher in grades 5 - 8 in RI public schools.</i></p>	<p>PATHWAYS:</p> <ul style="list-style-type: none"> ▪ Reciprocity <p>CRITERIA:</p> <ul style="list-style-type: none"> ▪ Major or equivalent in the content area or in a closely related field ▪ Completion of a minimum of 12 weeks of Student teaching in this area and a minimum of 60 hours Field experience prior to student teaching ▪ Demonstration of meeting the Professional Competencies of the RI Professional Teaching Standards (RIPTS), the Content Competencies as prescribed by the National Council for the Social Studies (NCSS), and the pedagogical competencies of the Association for Middle Level Education (AMLE) 	<p>Go to www.ets.org for test registration, date, and locations.</p> <p>Middle School Social Studies (5089) with a score of 160 OR Social Studies: Content Knowledge (5081) with a score of 162 AND Principles of Learning & Teaching 5-9 (5623) with a score of 160</p>
<p>Middle Grades Social Studies Teacher Elementary Extension* (11334)</p> <p><i>Valid for assignment as a Middle Grades Social Studies teacher in grades 5 - 8 in RI public schools.</i></p>	<p>PATHWAYS:</p> <ul style="list-style-type: none"> ▪ RI Approved Program, Credential Review: CRCL, and Reciprocity <p>CERTIFICATE: Hold an Elementary Education Teacher (11201)</p> <p>CRITERIA:</p> <ul style="list-style-type: none"> ▪ 21 semester hours in Social Studies with coursework in history as well as areas such as anthropology, political science, and sociology ▪ Completion of a minimum of 45 hours of practicum ▪ Demonstration of meeting the Professional Competencies of the RI Professional Teaching Standards (RIPTS), the Content Competencies as prescribed by the National Council for the Social Studies (NCSS), and the pedagogical competencies of the Association for Middle Level Education (AMLE) 	<p>Go to www.ets.org for test registration, date, and locations.</p> <p>Middle School Social Studies (5089) with a score of 160 OR Social Studies: Content Knowledge (5081) with a score of 162</p>



Middle Grades Requirements for Full Certification

CERTIFICATE & ASSIGNMENT	PATHWAYS & CRITERIA	ASSESSMENT
<p>Middle Grades Social Studies Teacher Secondary Extension* (11344)</p> <p><i>Valid for assignment as a Middle Grades Social Studies teacher in grades 5 - 8 in RI public schools.</i></p>	<p>PATHWAYS:</p> <ul style="list-style-type: none"> ▪ RI Approved Program, Credential Review: CRCI, and Reciprocity <p>CERTIFICATE: Hold a Secondary Social Studies Teacher (11410)</p> <p>CRITERIA:</p> <ul style="list-style-type: none"> ▪ Completion of a minimum of 45 hours of practicum ▪ Demonstration of meeting the Professional Competencies of the RI Professional Teaching Standards (RIPTS), the Content Competencies as prescribed by the National Council for the Social Studies (NCSS), and the pedagogical competencies of the Association for Middle Level Education (AMLE) 	<p>Go to www.ets.org for test registration, date, and locations.</p> <p>Middle School Social Studies (5089) with a score of 160 OR Social Studies: Content Knowledge (5081) with a score of 162</p>



Middle Grades Requirements for Full Certification

CERTIFICATE & ASSIGNMENT	PATHWAYS & CRITERIA	ASSESSMENT
<p>Middle Grades Special Education Teacher* (11381)</p> <p><i>Valid for assignment as a Middle Grades Special Education Teacher in grades 5-8 in RI public schools.</i></p> <p><u>ASSIGNMENT NOTES:</u> <i>Educators who hold certification in Elementary Education, Elementary Special Education, <u>and</u> Middle Grades Education in a content field are eligible for this assignment without holding the 11381 certificate.</i></p> <p><i>Educators who hold certification in a Secondary Grades content field, Secondary Special Education, <u>and</u> Middle Grades content field are also eligible for this assignment without holding the 11381 certificate.</i></p>	<p>PATHWAYS:</p> <ul style="list-style-type: none"> ▪ Credential Review: CRCI and Reciprocity <p>CERTIFICATE: Hold a Middle Grades Certificate in English, Mathematics, Science, or Social Studies</p> <p>CRITERIA:</p> <ul style="list-style-type: none"> ▪ Completion of 12 weeks of student teaching in this area and a minimum of 60 hours of field experience prior to student teaching ▪ Demonstration of meeting the Professional Competencies of the RI Professional Teaching Standards (RIPTS) and the Content Competencies as prescribed by the Council for Exceptional Children (CEC) 	<p>Go to www.ets.org for test registration, date, and locations.</p> <p>Special Education: Core Knowledge and Mild to Moderate Applications (5543) with a score of 164</p>



Middle Grades Requirements for Full Certification

CERTIFICATE & ASSIGNMENT	PATHWAYS & CRITERIA	ASSESSMENT
<p>Middle Grades Bilingual Dual Language Teacher* (11391)</p> <p><i>Language specific</i></p> <p><i>Valid for assignment as a Middle Grades Bilingual and Dual Language teacher in grades 5 - 8 in RI public schools.</i></p> <p><u>ASSIGNMENT NOTES:</u> <i>Educators who hold certification in Elementary Education, Elementary Bilingual and Dual Language, and Middle Grades Education in a content field are eligible for this assignment without holding the 11391 certificate.</i></p> <p><i>Educators who hold certification in a Secondary Grades content field, Secondary Bilingual and Dual Language, and Middle Grades content field are also eligible for this assignment without holding the 11391 certificate.</i></p>	<p>PATHWAYS:</p> <ul style="list-style-type: none"> • Credential Review: RIDE (see below) and Reciprocity <p>CERTIFICATE: Hold a Middle Grades Certificate in English, Mathematics, Science, or Social Studies</p> <p>CRITERIA:</p> <ul style="list-style-type: none"> • Completion of a minimum of 45 hours of practicum • Demonstration of meeting the Professional Competencies of the RI Professional Teaching Standards (RIPTS) and the Content Competencies as prescribed by the Teachers of English to Speakers of Other Languages (TESOL) 	<p>Go to www.ets.org for test registration, date, and locations.</p> <p>English to Speakers of Other Languages (5362) with a score of 155 AND Principles of Learning & Teaching 5-9 (5623) with a score of 160 AND APPLICABLE LANGUAGE TEST</p> <p>French World Language (5174) with a score of 162; German World Language (5183) with a score of 163; Latin (5601) with a score of 161; Spanish World Language (5195) with a score of 168; For all other languages: Oral Proficiency Interview (OPI) with a score of Advanced Low</p>



Middle Grades Requirements for Full Certification

CERTIFICATE & ASSIGNMENT	PATHWAYS & CRITERIA	ASSESSMENT
<p><u>RIDE CREDENTIAL REVIEW</u> Middle Grades Bilingual Dual Language Teacher* (11391)</p> <p><i>Language specific</i></p> <p><i>Valid for assignment as a Middle Grades Bilingual and Dual Language teacher in grades 5 - 8 in RI public schools.</i></p>	<p><u>CERTIFICATE:</u> Hold a Middle Grades Certificate in English, Mathematics, Science, or Social Studies</p> <p><u>CRITERIA:</u></p> <ul style="list-style-type: none"> ▪ Completion of a minimum of 45 hours of practicum ▪ Demonstration of meeting the Professional Competencies of the RI Professional Teaching Standards (RIPTS) and the Content Competencies as prescribed by the Teachers of English to Speakers of Other Languages (TESOL) ▪ Not less than 9 semester hours of coursework in each of the following areas: <ul style="list-style-type: none"> ○ Methods and Materials in Bilingual Education ○ Social Foundations of Bilingual-Bicultural Education; ○ Current issues in Bilingual-Bicultural Education 	<p>Go to www.ets.org for test registration, date, and locations.</p> <p>English to Speakers of Other Languages (5362) with a score of 155 AND Principles of Learning & Teaching 5-9 (5623) with a score of 160 AND APPLICABLE LANGUAGE TEST</p> <p>French World Language (5174) with a score of 162; German World Language (5183) with a score of 163; Latin (5601) with a score of 161; Spanish World Language (5195) with a score of 168; For all other languages: Oral Proficiency Interview (OPI) with a score of Advanced Low</p>



Middle Grades Requirements for Full Certification

CERTIFICATE & ASSIGNMENT	PATHWAYS & CRITERIA	ASSESSMENT
<p>Middle Grades English as a Second Language Teacher* (11392)</p> <p><i>Valid for assignment as a Middle Grades English as a Second Language teacher in grades 5 - 8 in RI public schools.</i></p> <p><u>ASSIGNMENT NOTES:</u> <i>Educators who hold certification in Elementary Education, Elementary English as a Second Language, <u>and</u> Middle Grades Education in a content field are eligible for this assignment without holding the 11392 certificate.</i></p> <p><i>Educators who hold certification in a Secondary Grades content field, Secondary English as a Second Language, <u>and</u> Middle Grades content field are also eligible for this assignment without holding the 11392 certificate.</i></p>	<p>PATHWAYS:</p> <ul style="list-style-type: none"> • Credential Review: CRCI and Reciprocity <p>CERTIFICATE: Hold a Middle Grades Certificate in English, Mathematics, Science, or Social Studies</p> <p>CRITERIA:</p> <ul style="list-style-type: none"> ▪ Completion of a minimum of 45 hours of practicum ▪ Demonstration of meeting the Professional Competencies of the RI Professional Teaching Standards (RIPTS) ▪ Demonstration of meeting the Content Competencies as prescribed by the Teachers of English to Speakers of Other Languages (TESOL) 	<p>Go to www.ets.org for test registration, date, and locations.</p> <p>English to Speakers of Other Languages (5362) with a score of 155</p>