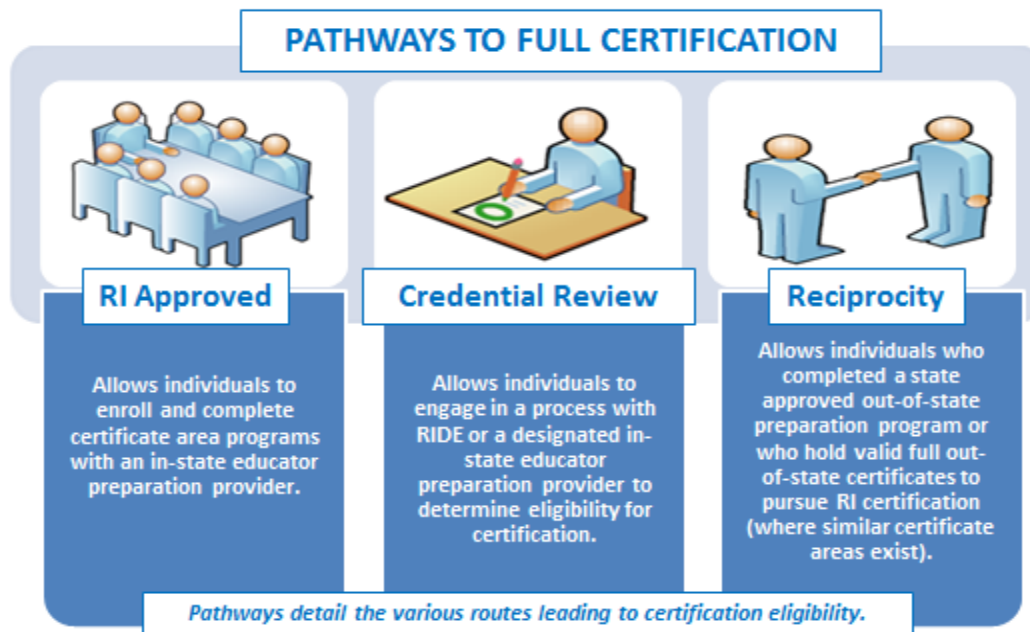




## Requirements for Full Certification-Secondary Grades

Applicants must satisfy all requirements in the following table for the certificate area(s) they are seeking.<sup>1</sup> The table includes details for each certificate area including the specific area, valid assignment details, available pathways, specific criteria, and required assessment(s).

*Note: Applicants prepared in a program where the language of instruction was not English must achieve a passing score of 64 on the Versant Pro Speaking and Writing English assessments. Additionally, dependent certificate areas are noted with an asterisk (\*) and specify the prerequisite certificate (within the criteria).*



## Certificate Areas

Secondary Grades Agriculture Teacher .....	2
Secondary Grades Agriculture Teacher (RIDE Credential Review) .....	3
Secondary Grades Bilingual Dual Language Teacher* .....	4
Secondary Grades Biology Teacher .....	5
Secondary Grades Business Education .....	5
Secondary Grades Career & Technical Education Teacher .....	6
Secondary Grades Chemistry Teacher .....	7
Secondary Grades English Teacher .....	7
Secondary Grades General Science Teacher .....	8
Secondary Grades Mathematics Teacher .....	9
Secondary Grades Physics Teacher .....	9
Secondary Grades Social Studies Teacher .....	10
Secondary Grades Special Education Teacher .....	10

<sup>1</sup> RI full certification demonstrates that an educator has met all RI certification requirements. RI full certification types include Initial, Professional, and Advanced certificates (all of which are multi-year certificates). RI full certification is comparable to National Association of State Directors of Teacher Education and Certification (NASDTEC) stage three or higher certificates and is recognized by other states for certificate reciprocity. RI full certification does not include preliminary certificates. Individuals pursuing their first full certificate should apply for their Initial certificate.



## Requirements for Full Certification-Secondary Grades

CERTIFICATE & ASSIGNMENT	PATHWAY & CRITERIA	ASSESSMENT
<p><b>Secondary Grades Agriculture Teacher (11401)</b></p> <p><i>Valid for assignment as a Secondary Grades Agriculture teacher in grades 7 - 12 in RI public schools</i></p>	<p><b><u>PATHWAYS:</u></b></p> <ul style="list-style-type: none"> <li>▪ Credential Review: RIDE (<a href="#">see below</a>) and Reciprocity</li> </ul> <p><b><u>CRITERIA:</u></b></p> <ul style="list-style-type: none"> <li>▪ Major or equivalent in Agriculture or a closely related field</li> <li>▪ Completion of a minimum of 12 weeks of student teaching in this area and a minimum of 60 hours field experience prior to student teaching</li> <li>▪ Demonstration of meeting content and pedagogical competencies as prescribed by appropriate RIDE-approved national professional association</li> <li>▪ Demonstration of deep understanding of applicable student standards and proficiency in designing and implementing standards-based instruction and assessment</li> </ul>	<p>Review the <a href="#">required tests</a> document and Go to <a href="http://www.ets.org">www.ets.org</a> for test registration, date, and locations</p>



## Requirements for Full Certification-Secondary Grades

CERTIFICATE & ASSIGNMENT	PATHWAY & CRITERIA	ASSESSMENT
<p><b>RIDE CREDENTIAL REVIEW</b>  <b>Secondary Grades Agriculture Teacher (11401)</b></p> <p><i>Valid for assignment as a Secondary Grades Agriculture teacher in grades 7 - 12 in RI public schools</i></p>	<p><b>CRITERIA:</b></p> <ul style="list-style-type: none"> <li>▪ Major or equivalent in Agriculture or a closely related field</li> <li>▪ Completion of a minimum of 12 weeks of student teaching in this area and a minimum of 60 hours field experience prior to student teaching. The student teaching requirement may be waived for an applicant who has had two or more documented years of successful teaching experience in an approved secondary setting</li> <li>▪ Demonstration of meeting content and pedagogical competencies as prescribed by appropriate RIDE-approved national professional association</li> <li>▪ Demonstration of deep understanding of applicable student standards and proficiency in designing and implementing standards-based instruction and assessment</li> <li>▪ Not less than 18 semester hours of course work to include work in each of the following areas:               <ul style="list-style-type: none"> <li>○ Adolescent Psychology</li> <li>○ Secondary Methods</li> <li>○ Measurements and Evaluation</li> <li>○ Identification of and Service to Special Needs Students</li> <li>○ Teaching of Reading in the Content Area</li> <li>○ Foundations of Education</li> </ul> </li> <li>▪ Not less than 36 semester hours of coursework to include work in each of the following areas:               <ul style="list-style-type: none"> <li>○ Plant Science</li> <li>○ Animal Science</li> <li>○ Related Mechanics</li> <li>○ Related Economics</li> </ul> </li> </ul>	<p>Review the <a href="#">required tests</a> document and            Go to <a href="http://www.ets.org">www.ets.org</a> for test registration, date, and locations</p>



## Requirements for Full Certification-Secondary Grades

CERTIFICATE & ASSIGNMENT	PATHWAY & CRITERIA	ASSESSMENT
<p><b>Secondary Grades Bilingual Dual Language Teacher* (11491)</b></p> <p><i>Language specific</i></p> <p><i>Valid for assignment as a Secondary Grades Bilingual and Dual Language Education teacher in grades 7 - 12 in RI public schools</i></p>	<p><b><u>PATHWAYS:</u></b></p> <ul style="list-style-type: none"> <li>▪ RI Approved Program, Credential Review: CRCI, and Reciprocity</li> </ul> <p><b><u>CERTIFICATE:</u></b> Hold any Secondary Grades Certificate</p> <p><b><u>CRITERIA:</u></b></p> <ul style="list-style-type: none"> <li>▪ Completion of 45 hours of practicum</li> <li>▪ Demonstration of meeting content and pedagogical competencies as prescribed by appropriate RIDE-approved national professional association</li> <li>▪ Demonstration of deep understanding of applicable student standards and proficiency in designing and implementing standards-based instruction and assessment</li> <li>▪ Demonstration of proficiency in the second language of instruction through Applicable Language Test</li> </ul> <p><b><u>NOTE:</u></b> Educators who hold a valid Bilingual Dual Language certificate are eligible for an English to Speakers of Other Languages certificate</p>	<p>Review the <a href="#">required tests</a> document and Go to <a href="http://www.ets.org">www.ets.org</a> for test registration, date, and locations</p>



## Requirements for Full Certification-Secondary Grades

CERTIFICATE & ASSIGNMENT	PATHWAY & CRITERIA	ASSESSMENT
<p><b>Secondary Grades Biology Teacher (11402)</b></p> <p><i>Valid for assignment as a Secondary Grades Biology teacher in grades 7 - 12 in RI public schools</i></p>	<p><b><u>PATHWAYS:</u></b></p> <ul style="list-style-type: none"> <li>▪ RI Approved Program, Credential Review: CRCI, and Reciprocity</li> </ul> <p><b><u>CRITERIA:</u></b></p> <ul style="list-style-type: none"> <li>▪ Major or equivalent in the content area or in a closely related field</li> <li>▪ Completion of a minimum of 12 weeks of student teaching in this area and a minimum of 60 hours field experience prior to student teaching</li> <li>▪ Demonstration of meeting content and pedagogical competencies as prescribed by appropriate RIDE-approved national professional association</li> <li>▪ Demonstration of deep understanding of applicable student standards and proficiency in designing and implementing standards-based instruction and assessment</li> </ul> <p><u>Note:</u> Educators who hold a secondary science content certificate (Biology, Chemistry, Physics or General Science) may apply for an additional secondary science content certificate by providing evidence of 24 credits and meeting RI test requirements in the science content area.</p>	<p>Review the <a href="#">required tests</a> document and Go to <a href="http://www.ets.org">www.ets.org</a> for test registration, date, and locations</p>
<p><b>Secondary Grades Business Education Teacher (11403)</b></p> <p><i>Valid for assignment as a Secondary Grades Business Education teacher in grades 7 - 12 in RI public schools</i></p>	<p><b><u>PATHWAYS:</u></b></p> <ul style="list-style-type: none"> <li>▪ RI Approved Program, Credential Review: CRCI, and Reciprocity</li> </ul> <p><b><u>CRITERIA:</u></b></p> <ul style="list-style-type: none"> <li>▪ Major or equivalent in the content area or in a closely related field</li> <li>▪ Completion of a minimum of 12 weeks of student teaching in this area and a minimum of 60 hours field experience prior to student teaching</li> <li>▪ Demonstration of meeting the Professional Competencies of the RI Professional Teaching Standards (RIPTS)</li> </ul>	<p>Review the <a href="#">required tests</a> document and Go to <a href="http://www.ets.org">www.ets.org</a> for test registration, date, and locations</p>



## Requirements for Full Certification-Secondary Grades

CERTIFICATE & ASSIGNMENT	PATHWAY & CRITERIA	ASSESSMENT
<p><b>Secondary Grades Career &amp; Technical Education Teacher (11404)</b></p> <p><i>Valid for assignment as a Secondary Grades Career and Technical Education teacher in grades 7 - 12 in the specific career and technical education area Rhode Island public schools</i></p>	<p><b><u>PATHWAYS:</u></b></p> <ul style="list-style-type: none"> <li>RI Approved Program, Credential Review: CRCI, and Reciprocity</li> </ul> <p><b><u>EXPERIENCE:</u></b></p> <ul style="list-style-type: none"> <li>Five years of work experience for the specific career and technical area if holds a high school diploma; three years of work experience in the career and technical area if the applicant holds an associate's or bachelor's degree in the career and technical area</li> </ul> <p><b><u>CRITERIA:</u></b></p> <ul style="list-style-type: none"> <li>A valid occupational license/certification in the career and technical area issued by the appropriate Rhode Island governing body, if applicable</li> <li>Appropriate level of post-secondary education for the CTE area sought as identified by RIDE</li> <li>Demonstration of meeting content and pedagogical competencies as prescribed by appropriate RIDE-approved national professional association</li> <li>Demonstration of deep understanding of applicable student standards and proficiency in designing and implementing standards-based instruction and assessment</li> </ul> <p><b><u>NOTE:</u></b></p> <ul style="list-style-type: none"> <li>Individuals who hold advanced state issued licenses or advanced industry certificates are not required to complete subject matter testing.</li> <li>Any work experience or degree completed more than ten (10) years prior to the date of application must meet subject matter testing requirements regardless of other licenses held.</li> </ul>	<p>Review the <a href="#">required tests</a> document and Go to <a href="http://www.ets.org">www.ets.org</a> for test registration, date, and locations</p>



## Requirements for Full Certification-Secondary Grades

CERTIFICATE & ASSIGNMENT	PATHWAY & CRITERIA	ASSESSMENT
<p><b>Secondary Grades Chemistry Teacher (11405)</b></p> <p><i>Valid for assignment as a Secondary Grades Chemistry teacher in grades 7 - 12 in RI public schools</i></p>	<p><b><u>PATHWAYS:</u></b></p> <ul style="list-style-type: none"> <li>▪ RI Approved Program, Credential Review: CRCI, and Reciprocity</li> </ul> <p><b><u>CRITERIA:</u></b></p> <ul style="list-style-type: none"> <li>▪ Major or equivalent in the content area or in a closely related field</li> <li>▪ Completion of a minimum of 12 weeks of student teaching in this area and a minimum of 60 hours field experience prior to student teaching</li> <li>▪ Demonstration of meeting content and pedagogical competencies as prescribed by appropriate RIDE-approved national professional association</li> <li>▪ Demonstration of deep understanding of applicable student standards and proficiency in designing and implementing standards-based instruction and assessment</li> </ul> <p><u>Note:</u> Educators who hold a secondary science content certificate (Biology, Chemistry, Physics or General Science) may apply for an additional secondary science content certificate by providing evidence of 24 credits and meeting RI test requirements in the science content area.</p>	<p>Review the <a href="#">required tests</a> document and Go to <a href="http://www.ets.org">www.ets.org</a> for test registration, date, and locations</p>
<p><b>Secondary Grades English Teacher (11406)</b></p> <p><i>Valid for assignment as a Secondary Grades English teacher in grades 7 - 12 in RI public schools</i></p>	<p><b><u>PATHWAYS:</u></b></p> <ul style="list-style-type: none"> <li>▪ RI Approved Program, Credential Review: CRCI, and Reciprocity</li> </ul> <p><b><u>CRITERIA:</u></b></p> <ul style="list-style-type: none"> <li>▪ Major or equivalent in the content area or in a closely related field</li> <li>▪ Completion of a minimum of 12 weeks of student teaching in this area and a minimum of 60 hours field experience prior to student teaching</li> <li>▪ Demonstration of meeting content and pedagogical competencies as prescribed by appropriate RIDE-approved national professional association</li> <li>▪ Demonstration of deep understanding of applicable student standards and proficiency in designing and implementing standards-based instruction and assessment.</li> </ul>	<p>Review the <a href="#">required tests</a> document and Go to <a href="http://www.ets.org">www.ets.org</a> for test registration, date, and locations</p>



## Requirements for Full Certification-Secondary Grades

CERTIFICATE & ASSIGNMENT	PATHWAY & CRITERIA	ASSESSMENT
<p><b>Secondary Grades General Science Teacher (11407)</b></p> <p><i>Valid for assignment as a Secondary Grades General Science teacher in grades 7 - 12 in RI public schools.</i></p>	<p><b><u>PATHWAYS:</u></b></p> <ul style="list-style-type: none"> <li>▪ RI Approved Program, Credential Review: CRCI, and Reciprocity</li> </ul> <p><b><u>CRITERIA:</u></b></p> <ul style="list-style-type: none"> <li>▪ Major or equivalent in the content area or in a closely related field</li> <li>Completion of a minimum of 12 weeks of student teaching in this area and a minimum of 60 hours field experience prior to student teaching</li> <li>▪ Demonstration of meeting content and pedagogical competencies as prescribed by appropriate RIDE-approved national professional association</li> <li>▪ Demonstration of deep understanding of applicable student standards and proficiency in designing and implementing standards-based instruction and assessment</li> </ul> <p><b><u>Note:</u></b></p> <ul style="list-style-type: none"> <li>▪ Teachers certified in two fields of Science, other than General Science, may be certified in General Science without additional tests or proof of additional qualifications.</li> <li>▪ Educators who hold a secondary science content certificate (Biology, Chemistry, Physics or General Science) may apply for an additional secondary science content certificate by providing evidence of 24 credits and meeting RI test requirements in the science content area.</li> </ul>	<p>Review the <a href="#">required tests</a> document and Go to <a href="http://www.ets.org">www.ets.org</a> for test registration, date, and locations</p>





## Requirements for Full Certification-Secondary Grades

CERTIFICATE & ASSIGNMENT	PATHWAY & CRITERIA	ASSESSMENT
<p><b>Secondary Grades Mathematics Teacher (11408)</b></p> <p><i>Valid for assignment as a Secondary Grades Mathematics teacher in grades 7 - 12 in RI public schools.</i></p>	<p><b><u>PATHWAYS:</u></b></p> <ul style="list-style-type: none"> <li>▪ RI Approved Program, Credential Review: CRCI, and Reciprocity</li> </ul> <p><b><u>CRITERIA:</u></b></p> <ul style="list-style-type: none"> <li>▪ Major or equivalent in the content area or in a closely related field</li> <li>▪ Completion of a minimum of 12 weeks of student teaching in this area and a minimum of 60 hours field experience prior to student teaching</li> <li>▪ Demonstration of meeting content and pedagogical competencies as prescribed by appropriate RIDE-approved national professional association</li> <li>▪ Demonstration of deep understanding of applicable student standards and proficiency in designing and implementing standards-based instruction and assessment.</li> </ul>	<p>Review the <a href="#">required tests</a> document and Go to <a href="http://www.ets.org">www.ets.org</a> for test registration, date, and locations</p>
<p><b>Secondary Grades Physics Teacher (11409)</b></p> <p><i>Valid for assignment as a Secondary Grades Physics teacher in grades 7 - 12 in RI public schools.</i></p>	<p><b><u>PATHWAYS:</u></b></p> <ul style="list-style-type: none"> <li>▪ RI Approved Program, Credential Review: CRCI, and Reciprocity</li> </ul> <p><b><u>CRITERIA:</u></b></p> <ul style="list-style-type: none"> <li>▪ Major or equivalent in the content area or in a closely related field</li> <li>▪ Completion of a minimum of 12 weeks of student teaching in this area and a minimum of 60 hours field experience prior to student teaching</li> <li>▪ Demonstration of meeting content and pedagogical competencies as prescribed by appropriate RIDE-approved national professional association</li> <li>▪ Demonstration of deep understanding of applicable student standards and proficiency in designing and implementing standards-based instruction and assessment</li> </ul> <p><b><u>Note:</u></b> Educators who hold a secondary science content certificate (Biology, Chemistry, Physics or General Science) may apply for an additional secondary science content certificate by providing evidence of 24 credits and meeting RI test requirements in the science content area.</p>	<p>Review the <a href="#">required tests</a> document and Go to <a href="http://www.ets.org">www.ets.org</a> for test registration, date, and locations</p>



## Requirements for Full Certification-Secondary Grades

CERTIFICATE & ASSIGNMENT	PATHWAY & CRITERIA	ASSESSMENT
<p><b>Secondary Grades Social Studies Teacher (11410)</b></p> <p><i>Valid for assignment as a Secondary Grades Social Studies teacher in grades 7 - 12 in RI public schools.</i></p> <p><i>This certificate is also valid for teaching secondary history, anthropology, economics, geography, political science, and sociology.</i></p>	<p><b><u>PATHWAYS:</u></b></p> <ul style="list-style-type: none"> <li>▪ RI Approved Program, Credential Review: CRCI, and Reciprocity</li> </ul> <p><b><u>CRITERIA:</u></b></p> <ul style="list-style-type: none"> <li>▪ Major or equivalent in the content area or in a closely related field with an emphasis on history</li> <li>▪ Completion of a minimum of 12 weeks of student teaching in this area and a minimum of 60 hours field experience prior to student teaching</li> <li>▪ Demonstration of meeting content and pedagogical competencies as prescribed by appropriate RIDE-approved national professional association</li> <li>▪ Demonstration of deep understanding of applicable student standards and proficiency in designing and implementing standards-based instruction and assessment.</li> </ul>	<p>Review the <a href="#">required tests</a> document and Go to <a href="http://www.ets.org">www.ets.org</a> for test registration, date, and locations</p>
<p><b>Secondary Grades Special Education Teacher (11482)</b></p> <p><i>Valid for assignment as a teacher in grades 7 – 12 in RI public schools as a Secondary Grades Special Education Teacher.</i></p> <p><i>May work in a self-contained setting in the content area designated or may provide services directly to students in general education or other settings in any content area.</i></p>	<p><b><u>PATHWAYS:</u></b></p> <ul style="list-style-type: none"> <li>▪ RI Approved Program, Credential Review: CRCI, and Reciprocity</li> </ul> <p><b><u>CRITERIA:</u></b></p> <ul style="list-style-type: none"> <li>▪ Completion of a minimum of 12 weeks of student teaching in this area and a minimum of 60 hours field experience prior to student teaching</li> <li>▪ Demonstration of meeting content and pedagogical competencies as prescribed by appropriate RIDE-approved national professional association</li> <li>▪ Demonstration of deep understanding of applicable student standards and proficiency in designing and implementing standards-based instruction and assessment</li> </ul>	<p>Review the <a href="#">required tests</a> document and Go to <a href="http://www.ets.org">www.ets.org</a> for test registration, date, and locations</p>