



RIDE Rhode Island
Department
of Education

A COMMUNITY OF PRACTICE IN SOCIAL-EMOTIONAL LEARNING (SEL)

SEL Activities in RI

This month we have 2 great topics. Join your colleagues to hear how some districts are teaching SEL skills to support students and teachers

JOIN US *(virtually)*

1. To learn how SEL coordinators are teaching and supporting SEL:

- Using SEL Screening information to identify classroom and school-wide needs—EL, MS and HS
- Supporting Teachers
- Hear about SEL Day (March 11, 2022)

Presenters:

Tabitha Watjen— SEL Facilitator, East Providence School Dept.

Karen Festa— SEL Coordinator, Narragansett Public Schools

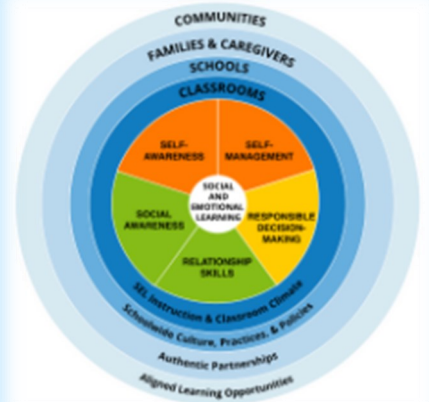
2. MAY is MENTAL HEALTH AWARENESS Month

- Hear how North Kingstown and Providence are promoting activities
- Consider how your school/district can prepare

Presenters:

Rose Molina—Lead Social Worker, Providence Schools

Sherrie Monaco— Psychologist, North Kingstown Schools



WHEN

**Wednesday,
March 23, 2022
3:30pm-5:00pm**

WHERE

**A Virtual Link
will be sent when
you [register](#)**

HOW

**[REGISTER HERE](#)
TODAY!
Attendance is
FREE!!**

WHO SHOULD ATTEND???

- *Administrators
- *General Educators
- *Special Educators
- *School Psychologists
- *School Social Workers
- *School Counselors
- *Pre-Service Students