

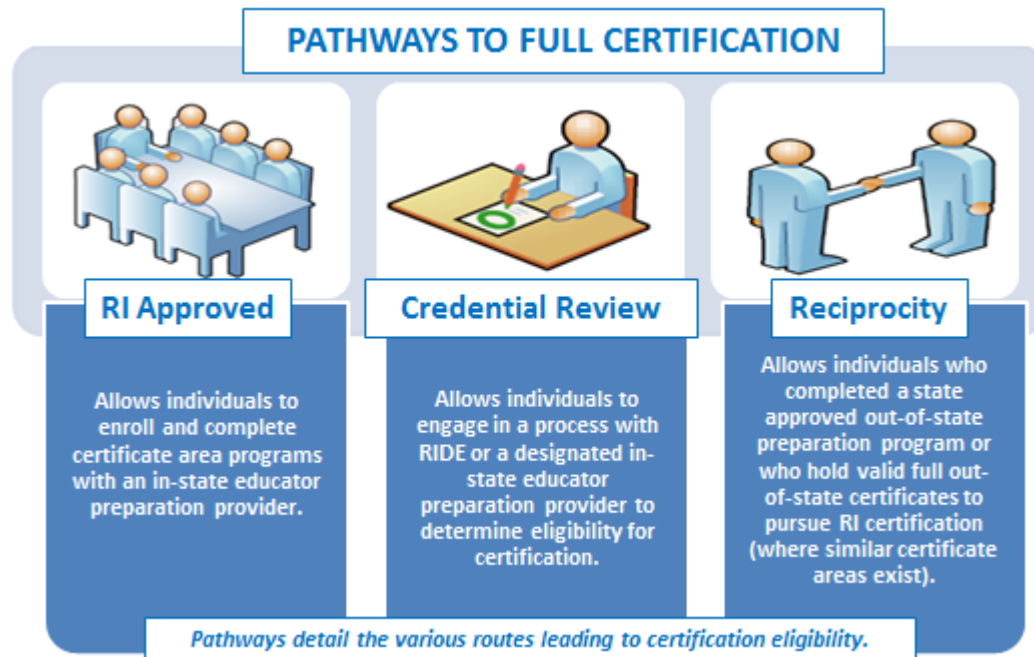


Requirements for Full Certification - Support Professional

Applicants must satisfy all requirements in the following table for the certificate area(s) they are seeking.¹ The table includes details for each certificate area including the specific area, valid assignment details, available pathways, specific criteria, and required assessment(s). All full teacher certificate areas require the applicant to hold a Bachelor’s degree from a regionally accredited institution.

Educators must submit all documentation listed within the requirements with [application materials](#). Demonstration of completion of a certification pathway as well as demonstration of meeting all other requirements is necessary for certification.

Note: Applicants prepared in a program where the language of instruction was not English must achieve a passing score of 64 on the Versant Pro Speaking and Writing English assessments. Additionally, dependent certificate areas are noted with an asterisk and specify the prerequisite certificate (within the criteria).



Certificate Areas

School Counselor	2
School Psychologist.....	2
School Psychologist (RIDE Credential Review).....	2
School Social Worker	3
School Social Worker (RIDE Credential Review)	3
Speech & Language Pathologist.....	3
Speech & Language Pathologist (RIDE Credential Review).....	4
Reading Specialist/Consultant*	4
Math Specialist/Consultant*	5
ESOL Specialist/Consultant*	5
ESOL Specialist/Consultant* (RIDE Credential Review)	6
Instructional Leader*	7
Registered School Nurse.....	8

¹ RI full certification demonstrates that an educator has met all RI certification requirements. RI full certification types include Initial, Professional, and Advanced certificates (all of which are multi-year certificates). RI full certification is comparable to National Association of State Directors of Teacher Education and Certification (NASDTEC) stage three or higher certificates and is recognized by other states for certificate reciprocity. RI full certification does not include preliminary certificates. Individuals pursuing their first full certificate should apply for their Initial certificate.



Requirements for Full Certification - Support Professional

CERTIFICATE & ASSIGNMENT	PATHWAYS & CRITERIA	ASSESSMENT
<p>School Counselor (13001)</p> <p><i>Valid for assignment as a School Counselor in grades PK - 12 in RI public schools</i></p>	<p><u>PATHWAYS:</u></p> <ul style="list-style-type: none"> ▪ RI Approved Program, Credential Review: CRCI, and Reciprocity <p><u>CRITERIA:</u></p> <ul style="list-style-type: none"> ▪ Completion of 300-hour internship ▪ Demonstration of meeting the content competencies as prescribed by the Council for the Accreditation of Counseling and Related Education Programs (CACREP) ▪ Advanced degree from a regionally accredited institution 	<p>Go to www.ets.org for test registration, date, and locations.</p> <p>Praxis II Professional School Counselor test (5421) with a score of 156</p>
<p>School Psychologist (13002)</p> <p><i>Valid for assignment as a School Psychologist in grades PK - 12 in RI public schools</i></p>	<p><u>PATHWAYS:</u></p> <ul style="list-style-type: none"> ▪ RI Approved Program, Credential Review: RIDE (see below), and Reciprocity <p><u>CRITERIA:</u></p> <ul style="list-style-type: none"> ▪ Advanced degree in School Psychology from a regionally accredited institution ▪ Demonstration of meeting the content competencies as prescribed by the National Association of School Psychologists (NASP) 	<p>Go to www.ets.org for test registration, date, and locations.</p> <p>Praxis II School Psychologist test (5402) with a score of 147</p>
<p><u>RIDE CREDENTIAL REVIEW</u></p> <p>School Psychologist (13002)</p> <p><i>Valid for assignment as a School Psychologist in grades PK - 12 in RI public schools</i></p>	<p><u>CRITERIA:</u></p> <ul style="list-style-type: none"> ▪ Advanced degree in School Psychology from a regionally accredited institution ▪ Demonstration of meeting the content competencies as prescribed by the National Association of School Psychologists (NASP) 	<p>Go to www.ets.org for test registration, date, and locations.</p> <p>Praxis II School Psychologist test (5402) with a score of 147</p>



Requirements for Full Certification - Support Professional

CERTIFICATE & ASSIGNMENT	PATHWAYS & CRITERIA	ASSESSMENT
<p>School Social Worker (13003)</p> <p><i>Valid for assignment as a School Social Worker in grades PK - 12 in RI public schools</i></p>	<p><u>PATHWAYS:</u></p> <ul style="list-style-type: none"> ▪ Credential Review: RIDE (see below), Reciprocity <p><u>CRITERIA:</u></p> <ul style="list-style-type: none"> ▪ Master's degree in Social Work from a regionally accredited institution ▪ Demonstration of meeting the content competencies as prescribed by the National Association of Social Workers (NASW) ▪ Licensed as a Clinical Social Worker by RI Board of Registration for Social Workers 	<p>N/A</p>
<p><u>RIDE CREDENTIAL REVIEW</u></p> <p>School Social Worker (13003)</p> <p><i>Valid for assignment as a School Social Worker in grades PK - 12 in RI public schools</i></p>	<p><u>CRITERIA:</u></p> <ul style="list-style-type: none"> ▪ Master's degree in Social Work from a regionally accredited institution ▪ Demonstration of meeting the content competencies as prescribed by the National Association of Social Workers (NASW) ▪ Licensed as a Clinical Social Worker by RI Board of Registration for Social Workers 	<p>N/A</p>
<p>Speech & Language Pathologist (13004)</p> <p><i>Valid for assignment as a Speech and Language Pathologist in grades PK - 12 in RI public schools</i></p>	<p><u>PATHWAYS:</u></p> <ul style="list-style-type: none"> ▪ RI Approved Program, Credential Review: RIDE, and Reciprocity <p><u>CRITERIA:</u></p> <ul style="list-style-type: none"> ▪ Advanced degree from a regionally accredited institution in Speech and Language Pathology ▪ Demonstration of meeting the content competencies as prescribed by the American Speech-Language-Hearing Association (ASHA) 	<p>Go to www.ets.org for test registration, date, and locations.</p> <p>Praxis II Speech and Language Pathologist test (5331) with a score of 162.</p>



Requirements for Full Certification - Support Professional

CERTIFICATE & ASSIGNMENT	PATHWAYS & CRITERIA	ASSESSMENT
<p><u>RIDE CREDENTIAL REVIEW</u> Speech & Language Pathologist (13004)</p> <p><i>Valid for assignment as a Speech and Language Pathologist in grades PK - 12 in RI public schools</i></p>	<p><u>CRITERIA:</u></p> <ul style="list-style-type: none"> ▪ Advanced degree from a regionally accredited institution in Speech and Language Pathology ▪ Demonstration of meeting the content competencies as prescribed by the American Speech-Language-Hearing Association (ASHA) 	<p>Go to www.ets.org for test registration, date, and locations.</p> <p>Praxis II Speech and Language Pathologist test (5331) with a score of 162.</p>
<p>Reading Specialist/Consultant* (13011)</p> <p><i>Valid for assignment as a Reading Specialist/Consultant in grades PK - 12 in RI public schools</i></p>	<p><u>PATHWAYS:</u></p> <ul style="list-style-type: none"> ▪ RI Approved Program, Credential Review: CRCI, and Reciprocity <p><u>CERTIFICATE:</u> Hold any full RI teaching certificate</p> <p><u>EXPERIENCE:</u> 3 years teaching experience</p> <p><u>CRITERIA:</u></p> <ul style="list-style-type: none"> ▪ Advanced degree from a regionally accredited institution ▪ Completion of 300-hour internship ▪ Demonstration of meeting the content competencies as prescribed by the International Reading Association (IRA) 	<p>Go to www.ets.org for test registration, date, and locations.</p> <p>Praxis II Reading Specialist (5301) with a score of 164</p>



Requirements for Full Certification - Support Professional

CERTIFICATE & ASSIGNMENT	PATHWAYS & CRITERIA	ASSESSMENT
<p>Math Specialist/Consultant* (13012)</p> <p><i>Valid for assignment as a Mathematics Specialist/Consultant in grades PK - 12 in RI public schools</i></p>	<p>PATHWAYS:</p> <ul style="list-style-type: none"> ▪ Reciprocity <p>CERTIFICATE: Hold any full RI teaching certificate</p> <p>EXPERIENCE: 3 years teaching experience</p> <p>CRITERIA:</p> <ul style="list-style-type: none"> ▪ Advanced degree from a regionally accredited institution ▪ Completion of 300-hour internship ▪ Demonstration of meeting the content competencies as prescribed by Association of Mathematics Teacher Educators (AMTE) for an Elementary Specialist 	<p>N/A</p>
<p>English to Speakers of Other Languages Specialist/Consultant* (13013)</p> <p><i>Valid for assignment as a English as a Second Language Specialist/Consultant in grades PK - 12 in RI public schools</i></p>	<p>PATHWAYS:</p> <ul style="list-style-type: none"> ▪ Credential Review: RIDE (see below), Reciprocity <p>CERTIFICATE: Hold any full RI teaching certificate</p> <p>EXPERIENCE: 3 years teaching experience</p> <p>CRITERIA:</p> <ul style="list-style-type: none"> ▪ Advanced degree from a regionally accredited institution ▪ Completion of 300-hour internship ▪ Demonstration of meeting the field competencies as prescribed by the Teachers of English to Speakers of Other Languages (TESOL) 	<p>Go to www.ets.org for test registration, date, and locations.</p> <p>Praxis II English to Speakers of Other Languages (5362) with a score of 155</p>



Requirements for Full Certification - Support Professional

CERTIFICATE & ASSIGNMENT	PATHWAYS & CRITERIA	ASSESSMENT
<p><u>RIDE CREDENTIAL REVIEW</u> English to Speakers of Other Languages Specialist/Consultant* (13013)</p> <p><i>Valid for assignment as a English as a Second Language Specialist/Consultant in grades PK - 12 in RI public schools</i></p>	<p><u>CERTIFICATE:</u> Hold any full RI teaching certificate</p> <p><u>EXPERIENCE:</u> 3 years teaching experience</p> <p><u>CRITERIA:</u></p> <ul style="list-style-type: none"> ▪ Advanced degree from a regionally accredited institution ▪ Completion of 300-hour Internship ▪ Demonstration of meeting the field competencies as prescribed by the Teachers of English to Speakers of Other Languages (TESOL) ▪ Not less than 24 semester hours of coursework in each of the following areas: <ul style="list-style-type: none"> ○ Introduction to English Linguistics ○ Curriculum and Methods for ESL Programs ○ Second Language Assessments and Evaluation ○ Socio-Cultural Foundations of ESL Education ○ Second Language Literacy for LEP Learners ○ Theories of First and Second Language Acquisition ○ The Supervision of ESL Programs ○ Identification and Service to Students with Special Needs 	<p>Go to www.ets.org for test registration, date, and locations.</p> <p>Praxis II English to Speakers of Other Languages (5362) with a score of 155.</p>



Requirements for Full Certification - Support Professional

CERTIFICATE & ASSIGNMENT	PATHWAYS & CRITERIA	ASSESSMENT
<p>Instructional Leader* (13021)</p> <p><i>Valid for assignment as an Instructional Leader in grades PK-12 in RI Public Schools</i></p>	<p>PATHWAYS:</p> <ul style="list-style-type: none"> ▪ Reciprocity <p>CERTIFICATE: Hold any full RI teaching certificate or Support Professional Certificate</p> <p>EXPERIENCE: 3 years teaching experience</p> <p>CRITERIA:</p> <ul style="list-style-type: none"> ▪ Advanced degree from a regionally accredited institution ▪ Completion of 300-hour Internship ▪ Demonstration of meeting the content competencies as prescribed by the Teacher Leadership Exploratory Consortium <p>** Currently, Rhode Island does not have an approved Instructional Leader program. Candidates can apply for this certificate through reciprocity.</p>	<p>N/A</p>
<p><u>RIDE CREDENTIAL REVIEW</u></p> <p>Registered School Nurse (13005)</p> <p><i>Valid for assignment as a Registered School Nurse in grades PK - 12 in Rhode Island public schools</i> <i>Individuals who hold this certificate are not eligible to serve as teachers of record.</i></p>	<p>PATHWAYS:</p> <ul style="list-style-type: none"> ▪ Credential Review (RIDE) <p>EXPERIENCE: 3 years of documented experience as a professional nurse</p> <p>CRITERIA:</p> <ul style="list-style-type: none"> ▪ Bachelor’s degree from a regionally accredited institution ▪ Current Rhode Island Nursing License <p>RENEWAL:</p> <ul style="list-style-type: none"> ▪ During the first renewal cycle from Initial to Professional level certification, individuals must complete professional learning units in school-based nursing procedures, child and adolescent development and supports for student learning needs. 	<p>N/A</p>